

Datasheet for ABIN185447
anti-SDHB antibody (C-Term)[Go to Product page](#)

2 Images

Overview

Quantity:	100 µg
Target:	SDHB
Binding Specificity:	C-Term
Reactivity:	Human
Host:	Goat
Clonality:	Polyclonal
Conjugate:	This SDHB antibody is un-conjugated
Application:	Western Blotting (WB), ELISA, Immunohistochemistry (IHC), Flow Cytometry (FACS), Immunofluorescence (IF)

Product Details

Purpose:	SDHB
Immunogen:	Peptide with sequence C-ATYKEKKASV, from the C Terminus of the protein sequence according to NP_002991.2.
Sequence:	ATYKEKKASV
Isotype:	IgG
Cross-Reactivity:	Human
Purification:	Purified from goat serum by ammonium sulphate precipitation followed by antigen affinity chromatography using the immunizing peptide.
Grade:	Verified

Target Details

Target:	SDHB
Alternative Name:	SDHB (SDHB Products)
Background:	SDHB, IP, SDH, SDH1, SDHIP, succinate dehydrogenase complex, subunit B, iron sulfur (Ip), OTTHUMP00000044624, iron-sulfur subunit, FLJ92337, PGL4, SDH2, SDHIP
Gene ID:	6390
NCBI Accession:	NP_002991

Application Details

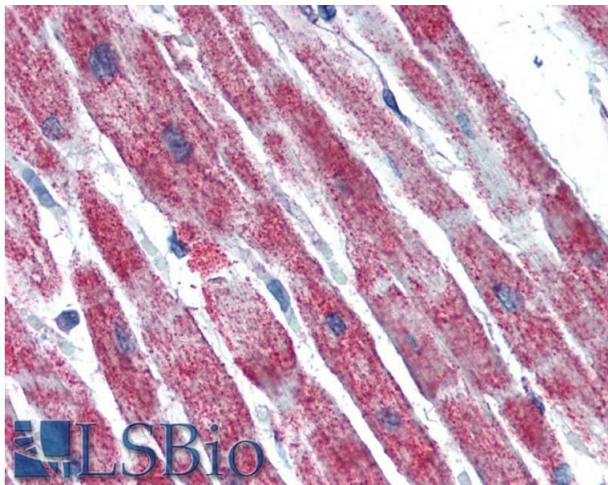
Application Notes:	<p>Immunohistochemistry: Paraffin embedded Human Kidney. Recommended concentration: 6-8 µg/mL.</p> <p>Western Blot: Approx 28-30 kDa band observed in lysates of cell lines HEK293, Jurkat and HeLa (calculated MW of 31.6 kDa according to NP_002991.2). Recommended concentration: 0.1-0.3 µg/mL. Primary incubation 1 hour at room temperature.</p> <p>Peptide ELISA: antibody detection limit dilution 1:8000.</p>
Comment:	<p>Immunofluorescence: Strong expression of the protein seen in the plasm membrane/cytoplasm of A431 cells. Recommended concentration: 10µg/ml.</p> <p>Flow Cytometry: Flow cytometric analysis of A431 cells. Recommended concentr</p>
Restrictions:	For Research Use only

Handling

Format:	Liquid
Concentration:	0.5 mg/mL
Buffer:	Supplied at 0.5 mg/mL in Tris saline, 0.02 % sodium azide, pH 7.3 with 0.5 % bovine serum albumin.
Preservative:	Sodium azide
Precaution of Use:	This product contains Sodium azide: a POISONOUS AND HAZARDOUS SUBSTANCE which should be handled by trained staff only.
Handling Advice:	Minimize freezing and thawing.
Storage:	-20 °C
Storage Comment:	Aliquot and store at -20°C, with minimal freeze/thawing. A working aliquot may be refrigerated

at 4°C for a few weeks and still remain viable.

Images



Immunohistochemistry

Image 1. ABIN185447 (5µg/ml) staining of paraffin embedded Human Heart. Steamed antigen retrieval with citrate buffer pH 6, AP-staining.

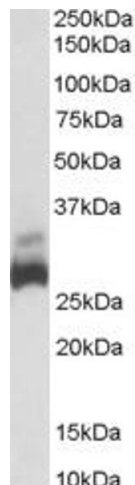


Image 2. ABIN185447 (0.03µg/ml) staining of Human Liver lysate (35µg protein in RIPA buffer). Primary incubation was 1 hour. Detected by chemiluminescence.