

Datasheet for ABIN185450

anti-Ghrelin antibody (C-Term)



[Go to Product page](#)

2 Images

1 Publication

Overview

Quantity:	100 µg
Target:	Ghrelin (GHRL)
Binding Specificity:	C-Term
Reactivity:	Human, Rat
Host:	Goat
Clonality:	Polyclonal
Conjugate:	This Ghrelin antibody is un-conjugated
Application:	ELISA, Immunohistochemistry (IHC), Immunocytochemistry (ICC)

Product Details

Purpose:	Ghrelin preproprotein
Immunogen:	Peptide with sequence C-QDILWEEAKEAPADK, from the C Terminus of the protein sequence according to NP_057446.1, NP_001128413.1, NP_001128416.1, NP_001128417.1, NP_001128418.1.
Sequence:	QDILWEEAKE APADK
Isotype:	IgG
Specificity:	This antibody is expected to recognise all reported isoforms.
Cross-Reactivity:	Human
Purification:	Purified from goat serum by ammonium sulphate precipitation followed by antigen affinity chromatography using the immunizing peptide.

Product Details

Grade: Verified

Target Details

Target: Ghrelin (GHRL)

Alternative Name: GHRL ([GHRL Products](#))

Background: GHRL, MTLRP, ghrelin, ghrelin precursor, motilin-related peptide, preproghrelin, ghrelin/obestatin prepropeptide, obestatin, OTTHUMP00000207794, OTTHUMP00000207795, OTTHUMP00000207796, OTTHUMP00000207798, ghrelin, growth hormone secretagogue receptor liga

Gene ID: 51738

NCBI Accession: [NP_057446](#), [NP_001128413](#), [NP_001128416](#), [NP_001128417](#), [NP_001128418](#)

Pathways: [Positive Regulation of Peptide Hormone Secretion](#), [Hormone Transport](#), [Peptide Hormone Metabolism](#), [Negative Regulation of Hormone Secretion](#), [Synaptic Membrane](#), [Feeding Behaviour](#)

Application Details

Application Notes: Immunohistochemistry: In paraffin embedded Human Placenta shows staining of trophoblast cytoplasm. Recommended concentration: 2-5 µg/mL. Paraffin embedded Human Colon. Recommended concentration: 2 µg/mL. Peptide ELISA: antibody detection limit dilution 1:8000.

Restrictions: For Research Use only

Handling

Format: Liquid

Concentration: 0.5 mg/mL

Buffer: Supplied at 0.5 mg/mL in Tris saline, 0.02 % sodium azide, pH 7.3 with 0.5 % bovine serum albumin.

Preservative: Sodium azide

Precaution of Use: This product contains Sodium azide: a POISONOUS AND HAZARDOUS SUBSTANCE which should be handled by trained staff only.

Handling Advice: Minimize freezing and thawing.

Handling

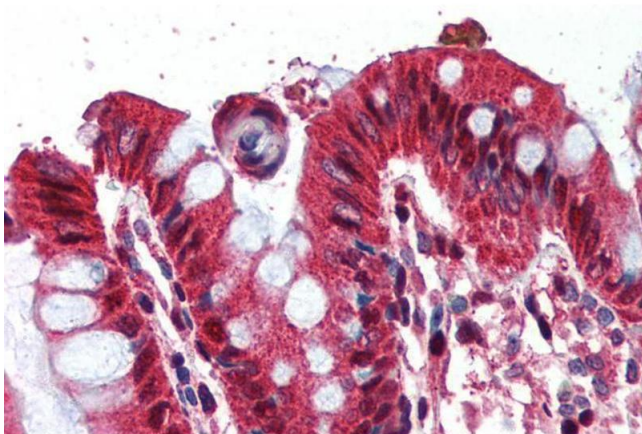
Storage: -20 °C

Storage Comment: Aliquot and store at -20°C, with minimal freeze/thawing. A working aliquot may be refrigerated at 4°C for a few weeks and still remain viable.

Publications

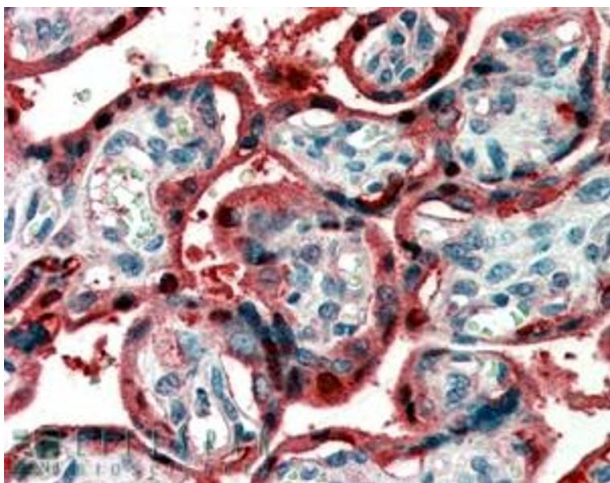
Product cited in: Stoyanova, Wiertz, Rutten: "Time-dependent changes in ghrelin-immunoreactivity in dissociated neuronal cultures of the newborn rat neocortex." in: **Regulatory peptides**, Vol. 158, Issue 1-3, pp. 86-90, (2009) ([PubMed](#)).

Images



Immunohistochemistry

Image 1. ABIN185450 (2µg/ml) staining of paraffin embedded Human Colon. Steamed antigen retrieval with citrate buffer pH 6, AP-staining.



Immunohistochemistry

Image 2. ABIN185450 (2µg/ml) staining of paraffin embedded Human Placenta. Steamed antigen retrieval with citrate buffer pH 6, AP-staining.