

Datasheet for ABIN185455  
**anti-MMP7 antibody (C-Term)**



[Go to Product page](#)

2 Images

## Overview

Quantity:	100 µg
Target:	MMP7
Binding Specificity:	C-Term
Reactivity:	Human
Host:	Goat
Clonality:	Polyclonal
Conjugate:	This MMP7 antibody is un-conjugated
Application:	Western Blotting (WB), Immunohistochemistry (IHC), ELISA

## Product Details

Purpose:	MMP7
Immunogen:	Peptide with sequence C-QKLYGKRSNSRKK, from the C Terminus of the protein sequence according to NP_002414.1.
Sequence:	QKLYGKRSNS RKK
Isotype:	IgG
Cross-Reactivity:	Human
Purification:	Purified from goat serum by ammonium sulphate precipitation followed by antigen affinity chromatography using the immunizing peptide.
Grade:	Verified

### Target Details

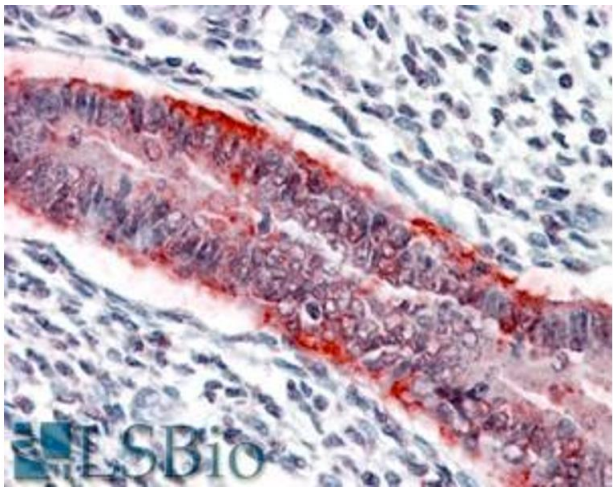
Target:	MMP7
Alternative Name:	MMP7 ( <a href="#">MMP7 Products</a> )
Background:	MMP7, matrix metalloproteinase 7 (matrilysin, uterine), HGNC:7174, MMP-7, MPSL1, PUMP-1, matrin, matrix metalloproteinase 7, uterine matrilysin, matrix metallopeptidase 7
Gene ID:	4316
NCBI Accession:	<a href="#">NP_002414</a>
Pathways:	<a href="#">Production of Molecular Mediator of Immune Response</a>

### Application Details

Application Notes:	<p>Immunohistochemistry: In paraffin embedded Human Uterus shows basal staining of an endometrial gland. Recommended concentration, 3-6 µg/mL.</p> <p>Western Blot: Approx 28 kDa band observed in Human Breast, Ovary and Placenta lysates (calculated MW of 29.7 kDa according to NP_002414.1). Recommended concentration: 0.03-0.1 µg/mL.</p> <p>Peptide ELISA: antibody detection limit dilution 1:64000.</p>
Restrictions:	For Research Use only

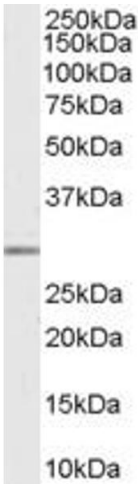
### Handling

Format:	Liquid
Concentration:	0.5 mg/mL
Buffer:	Supplied at 0.5 mg/mL in Tris saline, 0.02 % sodium azide, pH 7.3 with 0.5 % bovine serum albumin.
Preservative:	Sodium azide
Precaution of Use:	This product contains Sodium azide: a POISONOUS AND HAZARDOUS SUBSTANCE which should be handled by trained staff only.
Handling Advice:	Minimize freezing and thawing.
Storage:	-20 °C
Storage Comment:	Aliquot and store at -20°C, with minimal freeze/thawing. A working aliquot may be refrigerated at 4°C for a few weeks and still remain viable.



#### Immunohistochemistry

**Image 1.** ABIN185455 (3.8µg/ml) staining of paraffin embedded Human Uterus. Steamed antigen retrieval with citrate buffer pH 6, AP-staining.



**Image 2.** ABIN185455 (0.03µg/ml) staining of Human Breast lysate (35µg protein in RIPA buffer). Primary incubation was 1 hour. Detected by chemiluminescence.