

Datasheet for ABIN185456  
**anti-CFC1 antibody (Internal Region)**[Go to Product page](#)

## 1 Image

## Overview

Quantity:	100 µg
Target:	CFC1
Binding Specificity:	Internal Region
Reactivity:	Mouse
Host:	Goat
Clonality:	Polyclonal
Conjugate:	This CFC1 antibody is un-conjugated
Application:	ELISA, Immunohistochemistry (IHC)

## Product Details

Purpose:	CFC1 / Cripto-1
Immunogen:	Peptide with sequence HFTGRYCEHDQRRSEC, from the internal region of the protein sequence according to NP_115934.1.
Sequence:	HFTGRYCEHD QRRSEC
Isotype:	IgG
Cross-Reactivity:	Human, Mouse, Rat
Purification:	Purified from goat serum by ammonium sulphate precipitation followed by antigen affinity chromatography using the immunizing peptide.
Grade:	Verified

## Target Details

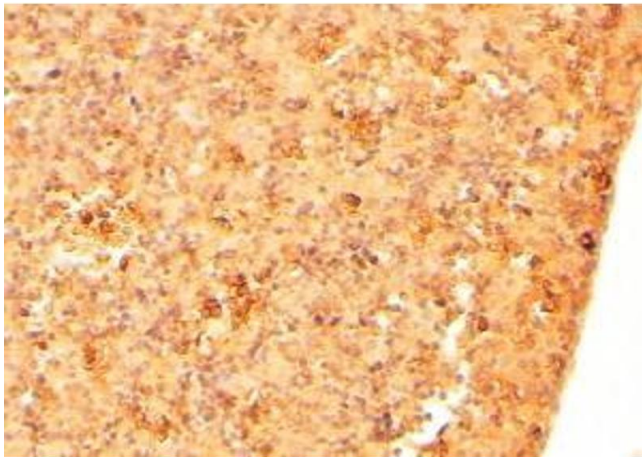
Target:	CFC1
Alternative Name:	CFC1 ( <a href="#">CFC1 Products</a> )
Background:	CFC1, HTX2, CRYPTIC, cripto, FRL-1, cryptic family 1, cripto-1, cryptic, cryptic gene, MGC133213, CR-1, FLJ77897
Gene ID:	55997
NCBI Accession:	<a href="#">NP_115934</a>

## Application Details

Application Notes:	<p>Immunohistochemistry: In paraffin embedded Mouse Embryonic Liver shows staining of the hepatocyte cell membranes. Recommended concentration: 1-2 µg/mL.</p> <p>Western Blot: Preliminary experiments gave an approx 55 kDa band in Human Breast, Placenta and Testis lysates after 0.1 µg/mL antibody staining. Please note that currently we cannot find an explanation in the literature for the band we observe given the ca</p> <p>Peptide ELISA: antibody detection limit dilution 1:32000.</p>
Restrictions:	For Research Use only

## Handling

Format:	Liquid
Concentration:	0.5 mg/mL
Buffer:	Supplied at 0.5 mg/mL in Tris saline, 0.02 % sodium azide, pH 7.3 with 0.5 % bovine serum albumin.
Preservative:	Sodium azide
Precaution of Use:	This product contains Sodium azide: a POISONOUS AND HAZARDOUS SUBSTANCE which should be handled by trained staff only.
Handling Advice:	Minimize freezing and thawing.
Storage:	-20 °C
Storage Comment:	Aliquot and store at -20°C, with minimal freeze/thawing. A working aliquot may be refrigerated at 4°C for a few weeks and still remain viable.



#### Immunohistochemistry

**Image 1.** ABIN185456 (2µg/ml) staining of paraffin embedded Mouse Embryo Liver. Steamed antigen retrieval with citrate buffer pH 6, HRP-staining.