

Datasheet for ABIN185458  
**anti-ERLIN2 antibody (C-Term)**



[Go to Product page](#)

2 Images

Overview

Quantity:	100 µg
Target:	ERLIN2
Binding Specificity:	C-Term
Reactivity:	Human
Host:	Goat
Clonality:	Polyclonal
Conjugate:	This ERLIN2 antibody is un-conjugated
Application:	Western Blotting (WB), ELISA, Immunohistochemistry (IHC)

Product Details

Purpose:	SPFH2 / ERLIN2
Immunogen:	Peptide with sequence C-EDEPLETATKEN, from the C Terminus of the protein sequence according to NP_009106.1.
Sequence:	EDEPLETATK EN
Isotype:	IgG
Specificity:	This antibody is expected to recognise isoform 1 (NP_009106) only.
Cross-Reactivity:	Human, Rat
Purification:	Purified from goat serum by ammonium sulphate precipitation followed by antigen affinity chromatography using the immunizing peptide.
Grade:	Verified

## Target Details

---

Target:	ERLIN2
Alternative Name:	ERLIN2 ( <a href="#">ERLIN2 Products</a> )
Background:	ERLIN2, SPFH2, ER lipid raft associated 2, SPFH domain family, member 2 , HGNC:1356, C8orf2, MGC87072 , chromosome 8 open reading frame 2, Erlin-2, MGC87072
Gene ID:	11160, 290823
NCBI Accession:	<a href="#">NP_009106</a>

## Application Details

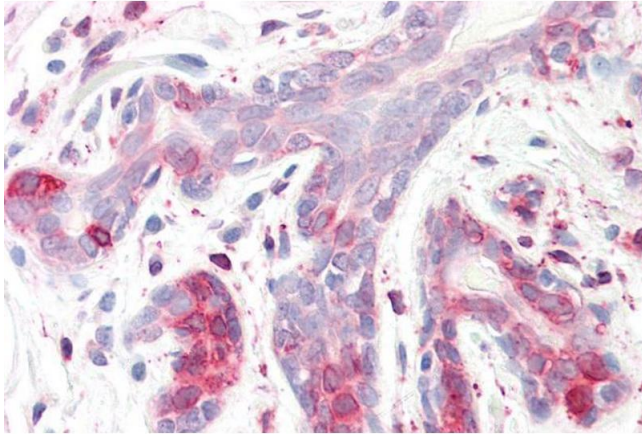
---

Application Notes:	<p>Immunohistochemistry: Paraffin embedded Human Breast. Recommended concentration: 3.75 µg/mL.</p> <p>Western Blot: Approx 43 kDa band observed in Human Breast lysates and in lysates of Human Breast Cancer (calculated MW of 37.8 kDa according to NP_009106.1). The observed molecular weight corresponds to earlier findings in literature with different antibody</p> <p>Peptide ELISA: antibody detection limit dilution 1:2000.</p>
Restrictions:	For Research Use only

## Handling

---

Format:	Liquid
Concentration:	0.5 mg/mL
Buffer:	Supplied at 0.5 mg/mL in Tris saline, 0.02 % sodium azide, pH 7.3 with 0.5 % bovine serum albumin.
Preservative:	Sodium azide
Precaution of Use:	This product contains Sodium azide: a POISONOUS AND HAZARDOUS SUBSTANCE which should be handled by trained staff only.
Handling Advice:	Minimize freezing and thawing.
Storage:	-20 °C
Storage Comment:	Aliquot and store at -20°C, with minimal freeze/thawing. A working aliquot may be refrigerated at 4°C for a few weeks and still remain viable.



### Immunohistochemistry

**Image 1.** ABIN185458 (3.75µg/ml) staining of paraffin embedded Human Breast. Steamed antigen retrieval with citrate buffer pH 6, AP-staining.



### Western Blotting

**Image 2.** ABIN185458 staining (1µg/ml) of Human Breast lysate (RIPA buffer, 30µg total protein per lane). Primary incubated for 1 hour. Detected by chemiluminescence.