

Datasheet for ABIN185461  
**anti-ERBB3 antibody (C-Term)**

## 3 Images

[Go to Product page](#)

## Overview

Quantity:	100 µg
Target:	ERBB3
Binding Specificity:	C-Term
Reactivity:	Human
Host:	Goat
Clonality:	Polyclonal
Conjugate:	This ERBB3 antibody is un-conjugated
Application:	ELISA, Immunohistochemistry (IHC), Immunofluorescence (IF), Flow Cytometry (FACS)

## Product Details

Purpose:	ERBB3 / HER3
Immunogen:	Peptide with sequence C-HSRLFPKANAQRT, from the C Terminus of the protein sequence according to NP_001973.2.
Sequence:	HSRLFPKANA QRT
Isotype:	IgG
Specificity:	This antibody is expected to recognise isoform 1 (NP_001973.2) only.
Cross-Reactivity:	Cow, Dog, Human, Mouse, Pig, Rat
Purification:	Purified from goat serum by ammonium sulphate precipitation followed by antigen affinity chromatography using the immunizing peptide.
Grade:	Verified

## Target Details

Target:	ERBB3
Alternative Name:	ERBB3 ( <a href="#">ERBB3 Products</a> )
Background:	ERBB3, HER3, v-erb-b2 erythroblastic leukemia viral oncogene homolog 3 (avian), HGNC:3431, ErbB-3, MDA-BF-1, c-erbB-3, c-erbB3, erbB3-S, p180-ErbB3, p45-sErbB3, p85-sErbB3, erbB-3, LCCS2, MGC88033, receptor tyrosine-protein kinase erbB-3, v-erb-b2 avian
Gene ID:	2065, 13867, 29496
NCBI Accession:	<a href="#">NP_001973</a>
Pathways:	<a href="#">RTK Signaling</a> , <a href="#">Fc-epsilon Receptor Signaling Pathway</a> , <a href="#">EGFR Signaling Pathway</a> , <a href="#">Neurotrophin Signaling Pathway</a>

## Application Details

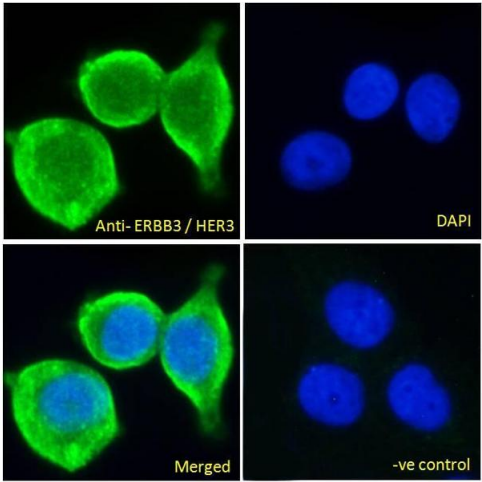
Application Notes:	Immunohistochemistry: Paraffin embedded Human Lung. Recommend concentration: 5 µg/mL. Peptide ELISA: antibody detection limit dilution 1:32000.
Comment:	<b>Immunofluorescence:</b> Strong expression of the protein seen in the cytoplasm/ membranes of MCF7 cells. Recommended concentration: 10µg/ml. <b>Flow Cytometry:</b> Flow cytometric analysis of MCF7 cells. Recommended concentration
Restrictions:	For Research Use only

## Handling

Format:	Liquid
Concentration:	0.5 mg/mL
Buffer:	Supplied at 0.5 mg/mL in Tris saline, 0.02 % sodium azide, pH 7.3 with 0.5 % bovine serum albumin.
Preservative:	Sodium azide
Precaution of Use:	This product contains Sodium azide: a POISONOUS AND HAZARDOUS SUBSTANCE which should be handled by trained staff only.
Handling Advice:	Minimize freezing and thawing.
Storage:	-20 °C
Storage Comment:	Aliquot and store at -20°C, with minimal freeze/thawing. A working aliquot may be refrigerated

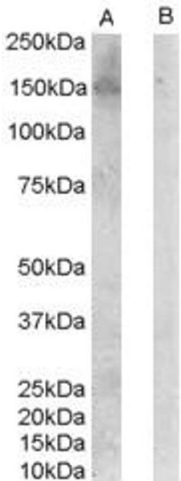
at 4°C for a few weeks and still remain viable.

Images

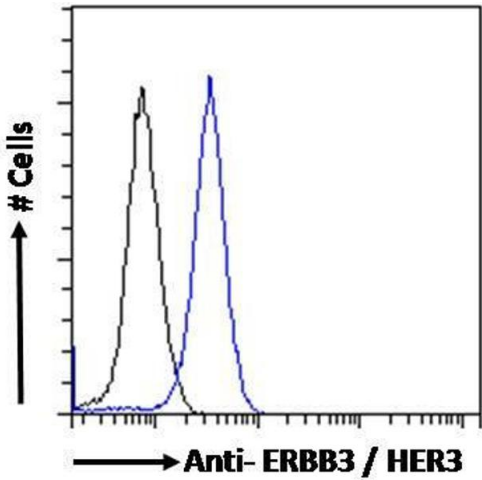


**Immunofluorescence**

**Image 1.** ABIN185461 Immunofluorescence analysis of paraformaldehyde fixed MCF7 cells, permeabilized with 0.15% Triton. Primary incubation 1hr (10ug/ml) followed by Alexa Fluor 488 secondary antibody (2ug/ml), showing plasma membrane/cytoplasmic staining. The nuclear stain is DAPI (blue). Negative control: Unimmunized goat IgG (10ug/ml) followed by Alexa Fluor 488 secondary antibody (2ug/ml).



**Image 2.** ABIN185461 (0.1µg/ml) staining of Jurkat lysate (35µg protein in RIPA buffer) with (B) and without (A) blocking with the immunising peptide. Primary incubation was 1 hour. Detected by chemiluminescence.



**Flow Cytometry**

**Image 3.** ABIN185461 Flow cytometric analysis of paraformaldehyde fixed MCF7 cells (blue line), permeabilized with 0.5% Triton. Primary incubation 1hr (10ug/ml) followed by Alexa Fluor 488 secondary antibody (1ug/ml). IgG control: Unimmunized goat IgG (black line) followed by Alexa Fluor 488 secondary antibody.