

Datasheet for ABIN185465
anti-GDF15 antibody (C-Term)

10 Images

[Go to Product page](#)

Overview

Quantity:	100 µg
Target:	GDF15
Binding Specificity:	C-Term
Reactivity:	Human
Host:	Goat
Clonality:	Polyclonal
Conjugate:	This GDF15 antibody is un-conjugated
Application:	Western Blotting (WB), ELISA, Immunohistochemistry (IHC), Flow Cytometry (FACS)

Product Details

Purpose:	GDF15
Immunogen:	Peptide with sequence C-QKTDGTGVSLQTYDD, from the C Terminus of the protein sequence according to NP_004855.2.
Sequence:	QKTDGTGVSLQ TYDD
Isotype:	IgG
Cross-Reactivity:	Human
Purification:	Purified from goat serum by ammonium sulphate precipitation followed by antigen affinity chromatography using the immunizing peptide.
Grade:	Verified

Target Details

Target:	GDF15
Alternative Name:	GDF15 (GDF15 Products)
Background:	GDF15, PDF, MIC1, PLAB, MIC-1, NAG-1, PTGFB, GDF-15, growth differentiation factor 15, PTGF-beta, prostate differentiation factor, NSAID (nonsteroidal anti-inflammatory drug)-activated protein 1
Gene ID:	9518
NCBI Accession:	NP_004855
Pathways:	SARS-CoV-2 Protein Interactome

Application Details

Application Notes:	Immunohistochemistry: Paraffin embedded Human Placenta. Recommended concentration: 7 µg/mL. Western Blot: Approx 35 kDa band observed in Human Prostate lysates and in lysates of cell lines A549, CaCo-2 and LNCaP (calculated MW of 34.1 kDa according to NP_004855.2). An additional band was seen at 48 kDa in some lysates and was successfully blocked Peptide ELISA: antibody detection limit dilution 1:128000.
Comment:	Flow Cytometry: Flow cytometric analysis of HeLa cells. Recommended concentration: 10ug/ml.
Restrictions:	For Research Use only

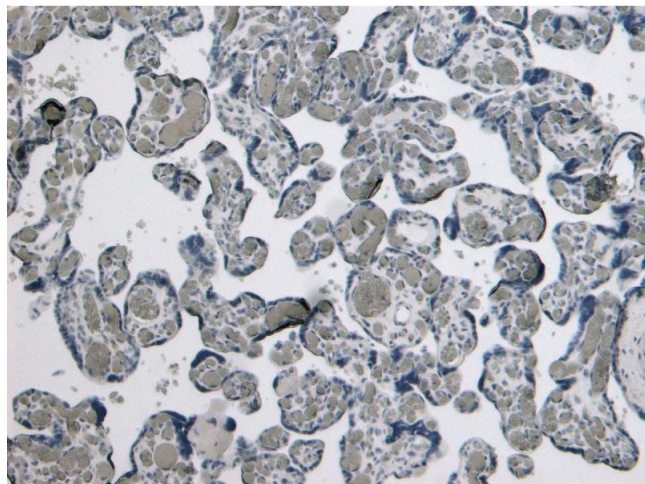
Handling

Format:	Liquid
Concentration:	0.5 mg/mL
Buffer:	Supplied at 0.5 mg/mL in Tris saline, 0.02 % sodium azide, pH 7.3 with 0.5 % bovine serum albumin.
Preservative:	Sodium azide
Precaution of Use:	This product contains Sodium azide: a POISONOUS AND HAZARDOUS SUBSTANCE which should be handled by trained staff only.
Handling Advice:	Minimize freezing and thawing.
Storage:	-20 °C

Handling

Storage Comment: Aliquot and store at -20°C, with minimal freeze/thawing. A working aliquot may be refrigerated at 4°C for a few weeks and still remain viable.

Images



Immunohistochemistry

Image 1. (ABIN185465) Negative Control showing staining of paraffin embedded Human Placenta, with no primary antibody.

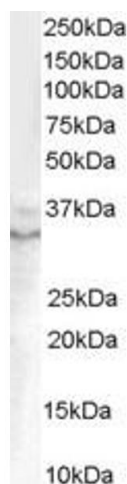
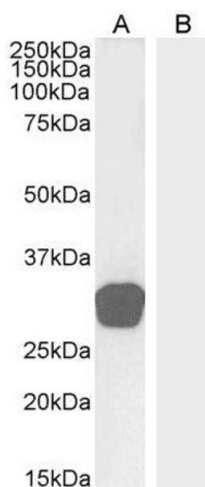


Image 2. ABIN185465 (0.1µg/ml) staining of Human Prostate lysate (35µg protein in RIPA buffer). Primary incubation was 1 hour. Detected by chemiluminescence.



Western Blotting

Image 3. ABIN185465 (0.3µg/ml) staining of Human Testes (A) and negative control Skin (B) lysate (35µg protein in RIPA buffer). Detected by chemiluminescence.

Please check the [product details page](#) for more images. Overall 10 images are available for ABIN185465.