

Datasheet for ABIN185468
anti-CREB3L1 antibody (C-Term)

3 Images

[Go to Product page](#)

Overview

Quantity:	100 µg
Target:	CREB3L1
Binding Specificity:	C-Term
Reactivity:	Human
Host:	Goat
Clonality:	Polyclonal
Conjugate:	This CREB3L1 antibody is un-conjugated
Application:	Western Blotting (WB), ELISA, Immunohistochemistry (IHC)

Product Details

Purpose:	OASIS / CREB3L1
Immunogen:	Peptide with sequence C-DFSHSKEWFHDRD, from the C Terminus of the protein sequence according to NP_443086.1.
Sequence:	DFSHSKEWFH DRD
Isotype:	IgG
Cross-Reactivity:	Human, Mouse, Rat
Purification:	Purified from goat serum by ammonium sulphate precipitation followed by antigen affinity chromatography using the immunizing peptide.
Grade:	Verified

Target Details

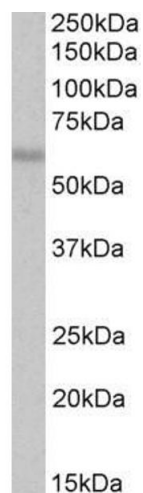
Target:	CREB3L1
Alternative Name:	CREB3L1 (CREB3L1 Products)
Background:	CREB3L1, OASIS, cAMP responsive element binding protein 3-like 1, BBF-2 (drosophila) homolog, old astrocyte specifically induced substance, BBF-2 homolog
NCBI Accession:	NP_443086
Pathways:	Thyroid Hormone Synthesis , Chromatin Binding

Application Details

Application Notes:	Immunohistochemistry: Paraffin embedded Human Skeletal Muscle and Liver. Recommended concentration: 3.75 µg/mL. Western Blot: Approx 60 kDa band observed in lysates of cell line A549 (calculated MW of 57.0 kDa according to NP_443086.1). Recommended concentration: 1-3 µg/mL. Peptide ELISA: antibody detection limit dilution 1:32000.
Restrictions:	For Research Use only

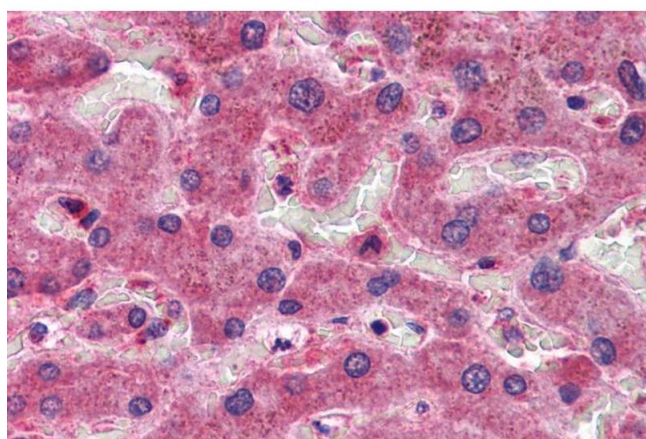
Handling

Format:	Liquid
Concentration:	0.5 mg/mL
Buffer:	Supplied at 0.5 mg/mL in Tris saline, 0.02 % sodium azide, pH 7.3 with 0.5 % bovine serum albumin.
Preservative:	Sodium azide
Precaution of Use:	This product contains Sodium azide: a POISONOUS AND HAZARDOUS SUBSTANCE which should be handled by trained staff only.
Handling Advice:	Minimize freezing and thawing.
Storage:	-20 °C
Storage Comment:	Aliquot and store at -20°C, with minimal freeze/thawing. A working aliquot may be refrigerated at 4°C for a few weeks and still remain viable.



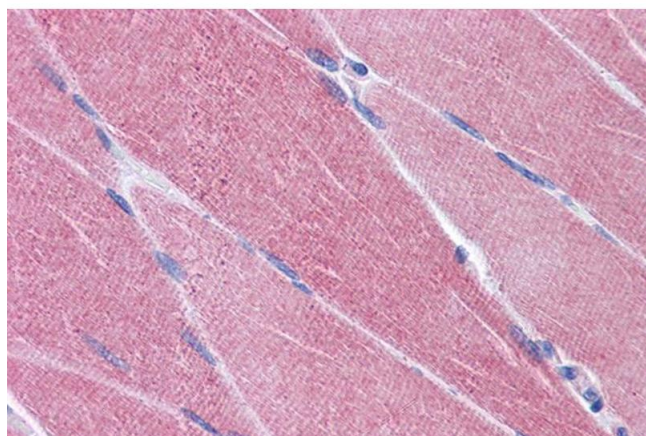
Western Blotting

Image 1. ABIN185468 (1 μ g/ml) staining of A549 lysate (35 μ g protein in RIPA buffer). Primary incubation was 1 hour. Detected by chemiluminescence.



Immunohistochemistry

Image 2. ABIN185468 (3.75 μ g/ml) staining of paraffin embedded Human Liver. Steamed antigen retrieval with citrate buffer pH 6, AP-staining.



Immunohistochemistry

Image 3. ABIN185468 (3.75 μ g/ml) staining of paraffin embedded Human Skeletal Muscle. Steamed antigen retrieval with citrate buffer pH 6, AP-staining.