

Datasheet for ABIN185470  
**anti-PLAU antibody (C-Term)**

## 5 Images

[Go to Product page](#)

## Overview

Quantity:	100 µg
Target:	PLAU
Binding Specificity:	C-Term
Reactivity:	Human
Host:	Goat
Clonality:	Polyclonal
Conjugate:	This PLAU antibody is un-conjugated
Application:	ELISA, Immunohistochemistry (IHC)

## Product Details

Purpose:	Plasminogen Activator / PLAU
Immunogen:	Peptide with sequence C-HFLPWIRSHTKEEN, from the C Terminus of the protein sequence according to NP_002649.1, NP_001138503.1.
Sequence:	HFLPWIRSHT KEEN
Isotype:	IgG
Specificity:	This antibody is expected to recognise both reported isoforms.
Cross-Reactivity:	Human
Purification:	Purified from goat serum by ammonium sulphate precipitation followed by antigen affinity chromatography using the immunizing peptide.
Grade:	Verified

## Target Details

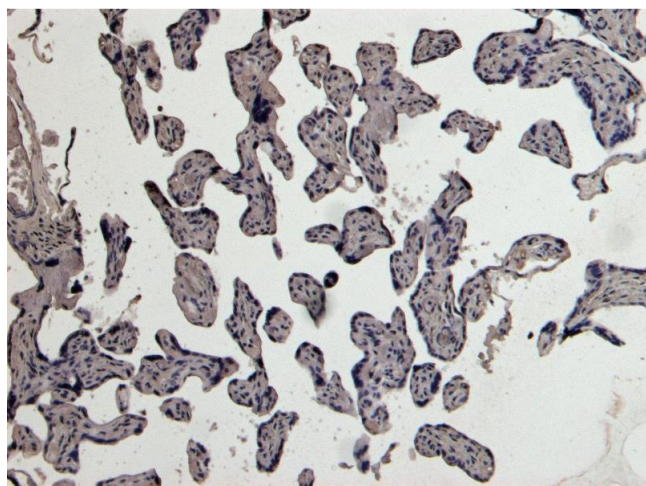
Target:	PLAU
Alternative Name:	Plasminogen Activator / PLAU ( <a href="#">PLAU Products</a> )
Background:	PLAU, plasminogen activator, urokinase, HGNC:9052, ATF, UPA, URK, u-PA , U-plasminogen activator, antagonist of uPA, plasminogen activator, urinary, urokinase plasminogen activator, urokinase-type plasminogen activator amino-terminal, urokinase-type plasm
Gene ID:	5328
NCBI Accession:	<a href="#">NP_002649</a> , <a href="#">NP_001138503</a>
Pathways:	<a href="#">Cellular Response to Molecule of Bacterial Origin</a> , <a href="#">Carbohydrate Homeostasis</a> , <a href="#">Autophagy</a> , <a href="#">Smooth Muscle Cell Migration</a>

## Application Details

Application Notes:	Immunohistochemistry: Paraffin embedded Human Prostate and Placenta. Recommended concentration: 8 µg/mL. Peptide ELISA: antibody detection limit dilution 1:16000.
Restrictions:	For Research Use only

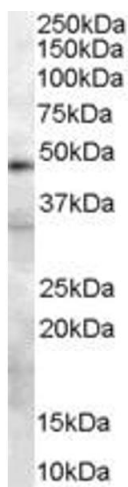
## Handling

Format:	Liquid
Concentration:	0.5 mg/mL
Buffer:	Supplied at 0.5 mg/mL in Tris saline, 0.02 % sodium azide, pH 7.3 with 0.5 % bovine serum albumin.
Preservative:	Sodium azide
Precaution of Use:	This product contains Sodium azide: a POISONOUS AND HAZARDOUS SUBSTANCE which should be handled by trained staff only.
Handling Advice:	Minimize freezing and thawing.
Storage:	-20 °C
Storage Comment:	Aliquot and store at -20°C, with minimal freeze/thawing. A working aliquot may be refrigerated at 4°C for a few weeks and still remain viable.

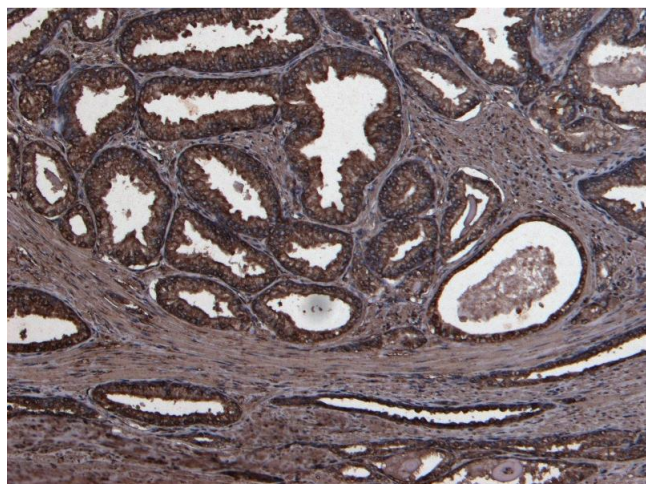


#### Immunohistochemistry

**Image 1.** ABIN185470 Negative Control showing staining of paraffin embedded Human Placenta, with no primary antibody.



**Image 2.** ABIN185470 (0.3µg/ml) staining of 293 lysate (35µg protein in RIPA buffer). Primary incubation was 1 hour. Detected by chemiluminescence.



#### Immunohistochemistry

**Image 3.** ABIN185470 (8 µg/mL) staining of paraffin embedded Human Prostate. Heat induced antigen retrieval with citrate buffer pH 6, HRP-staining.

Please check the [product details page](#) for more images. Overall 5 images are available for ABIN185470.