

Datasheet for ABIN185471

anti-LIM Domain Binding 3 Protein antibody (Internal Region)[Go to Product page](#)**3** Images

Overview

Quantity:	100 µg
Target:	LIM Domain Binding 3 Protein (LDB3)
Binding Specificity:	Internal Region
Reactivity:	Human
Host:	Goat
Clonality:	Polyclonal
Conjugate:	This LIM Domain Binding 3 Protein antibody is un-conjugated
Application:	Western Blotting (WB), ELISA, Immunohistochemistry (IHC)

Product Details

Purpose:	ZASP/ CYPHER / LDB3
Immunogen:	Peptide with sequence C-KSQNKPEDEADE, from the internal region of the protein sequence according to NP_009009.1, NP_001073583.1, NP_001073584.1, NP_001073585.1.
Sequence:	KSQNKPEDEA DE
Isotype:	IgG
Cross-Reactivity:	Dog, Human, Mouse, Pig, Rat
Purification:	Purified from goat serum by ammonium sulphate precipitation followed by antigen affinity chromatography using the immunizing peptide.
Grade:	Verified

Target Details

Target:	LIM Domain Binding 3 Protein (LDB3)
Alternative Name:	LDB3 (LDB3 Products)
Background:	LDB3, ZASP, LIM domain binding 3 , HGNC:15710, KIAA01613, KIAA0613, ORACLE, PDLIM6, PDZ and LIM domain 6, Z-band alternatively spliced PDZ-motif, CYPHER, FLJ35865, ldb3z1, ldb3z4
Gene ID:	11155
NCBI Accession:	NP_009009 , NP_001073583 , NP_001073584 , NP_001073585

Application Details

Application Notes:	Immunohistochemistry: Paraffin embedded Human Heart. Recommended concentration: 6-7 µg/mL. Western Blot: Western Blot experiments gave bands at approx 90 kDa and 35 kDa in Human Skeletal Muscle lysate after 1 µg/mL antibody staining. These bands correspond to earlier findings in literature with different antibodies (Huang et al J Biol Chem. 2003 Peptide ELISA: antibody detection limit dilution 1:1000.
Restrictions:	For Research Use only

Handling

Format:	Liquid
Concentration:	0.5 mg/mL
Buffer:	Supplied at 0.5 mg/mL in Tris saline, 0.02 % sodium azide, pH 7.3 with 0.5 % bovine serum albumin.
Preservative:	Sodium azide
Precaution of Use:	This product contains Sodium azide: a POISONOUS AND HAZARDOUS SUBSTANCE which should be handled by trained staff only.
Handling Advice:	Minimize freezing and thawing.
Storage:	-20 °C
Storage Comment:	Aliquot and store at -20°C, with minimal freeze/thawing. A working aliquot may be refrigerated at 4°C for a few weeks and still remain viable.



Western Blotting

Image 1. ABIN185471 (0.1µg/ml) staining of Human Skeletal Muscle lysate (35µg protein in RIPA buffer). Primary incubation was 1 hour. Detected by chemiluminescence.

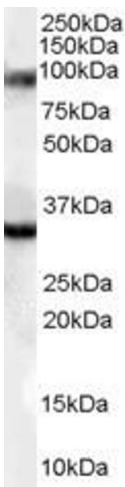
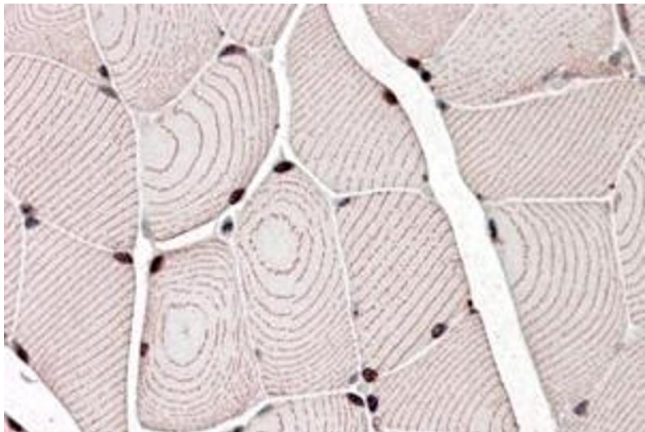


Image 2. ABIN185471 (0.01 ug/ml) staining of human muscle lysate (35 ug protein in RIPA buffer). Primary incubation was 1 hour. Detected by chemiluminescence.



Immunohistochemistry

Image 3. ABIN185471 (3.8µg/ml) staining of paraffin embedded Human Skeletal Muscle. Steamed antigen retrieval with citrate buffer pH 6, AP-staining. This data was obtained using a previous batch.