

Datasheet for ABIN185472
anti-GOLGA6B antibody (Internal Region)[Go to Product page](#)

1 Image

Overview

Quantity:	100 µg
Target:	GOLGA6B
Binding Specificity:	Internal Region
Reactivity:	Human
Host:	Goat
Clonality:	Polyclonal
Conjugate:	This GOLGA6B antibody is un-conjugated
Application:	ELISA, Immunohistochemistry (IHC)

Product Details

Purpose:	GOLGA6 / GLP
Immunogen:	Peptide with sequence C-DLPKEKADGTEQ, from the internal region of the protein sequence according to NP_061122.4, NP_001033729.1.
Sequence:	DLPKEKADGT EQ
Isotype:	IgG
Specificity:	GeneID 55889 may be a pseudogene, while GeneID 342096 is thought to encode a functional protein.
Cross-Reactivity:	Human
Purification:	Purified from goat serum by ammonium sulphate precipitation followed by antigen affinity chromatography using the immunizing peptide.

Product Details

Grade: Verified

Target Details

Target: GOLGA6B

Alternative Name: GOLGA6B ([GOLGA6B Products](#))

Background: GOLGA6B, GOLGA6, golgi autoantigen, golgin subfamily a, member 6, HGNC:13567, GLP, Golgi autoantigen, golgin subfamily a, 6, Golgin linked to PML, golgin-like protein, golgi autoantigen, golgin subfamily a, 6B, GOLGA, Golgin subfamily A member 6B

Gene ID: 55889, 342096

NCBI Accession: [NP_061122](#), [NP_001033729](#)

Application Details

Application Notes: Immunohistochemistry: In paraffin embedded Human Cerebral Cortex shows localized cytoplasm staining consistent with Golgi. Recommended concentration, 3-6 µg/mL.
Western Blot: Preliminary experiments gave an approx 45 kDa band in human liver lysates after 1 µg/mL antibody staining. Please note that currently we cannot find an explanation in the literature for the band we observe given the calculated size of 79.9 kDa
Peptide ELISA: antibody detection limit dilution 1:1000.

Restrictions: For Research Use only

Handling

Format: Liquid

Concentration: 0.5 mg/mL

Buffer: Supplied at 0.5 mg/mL in Tris saline, 0.02 % sodium azide, pH 7.3 with 0.5 % bovine serum albumin.

Preservative: Sodium azide

Precaution of Use: This product contains Sodium azide: a POISONOUS AND HAZARDOUS SUBSTANCE which should be handled by trained staff only.

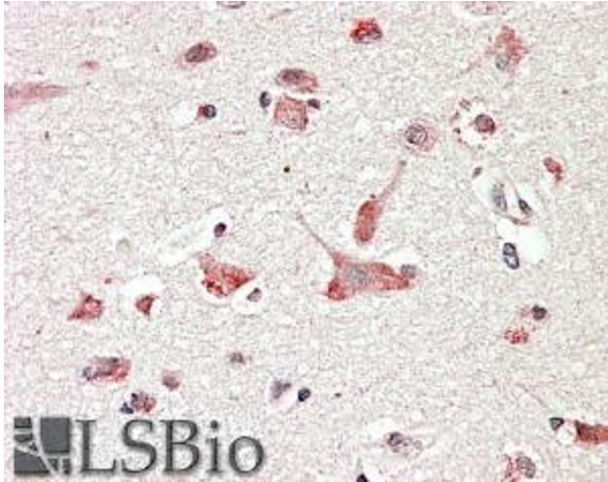
Handling Advice: Minimize freezing and thawing.

Storage: -20 °C

Handling

Storage Comment: Aliquot and store at -20°C, with minimal freeze/thawing. A working aliquot may be refrigerated at 4°C for a few weeks and still remain viable.

Images



Immunohistochemistry

Image 1. ABIN185472 (3.8µg/ml) staining of paraffin embedded Human Cerebral Cortex. Steamed antigen retrieval with citrate buffer pH 6, AP-staining.