

Datasheet for ABIN185474

anti-Monoamine Oxidase A antibody (Internal Region)

3 Images

[Go to Product page](#)

Overview

Quantity:	100 µg
Target:	Monoamine Oxidase A (MAOA)
Binding Specificity:	Internal Region
Reactivity:	Human
Host:	Goat
Clonality:	Polyclonal
Conjugate:	This Monoamine Oxidase A antibody is un-conjugated
Application:	Western Blotting (WB), Immunohistochemistry (IHC), ELISA

Product Details

Purpose:	Monoamine Oxidase A
Immunogen:	Peptide with sequence C-DAPWEAQHADKWDK, from the internal region of the protein sequence according to NP_000231.1.
Sequence:	DAPWEAQHAD KWDK
Isotype:	IgG
Cross-Reactivity:	Human
Purification:	Purified from goat serum by ammonium sulphate precipitation followed by antigen affinity chromatography using the immunizing peptide.
Grade:	Verified

Target Details

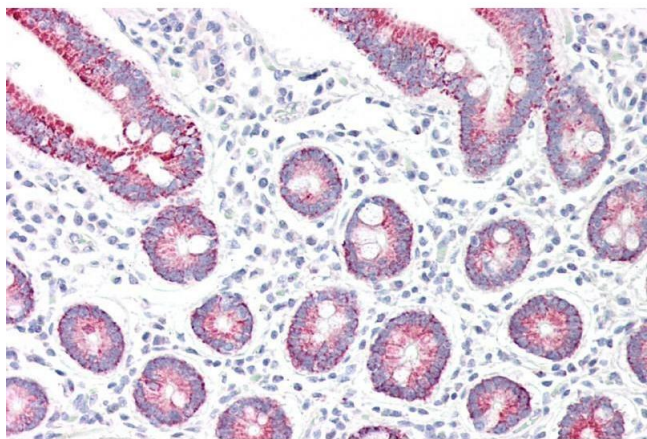
Target:	Monoamine Oxidase A (MAOA)
Alternative Name:	MAOA (MAOA Products)
Background:	MAOA, monoamine oxidase A, HGNC:6833, RP1-201D17__B.2
Gene ID:	4128
NCBI Accession:	NP_000231

Application Details

Application Notes:	<p>Immunohistochemistry: Paraffin embedded Human Placenta and Small Intestine.</p> <p>Recommended concentration: 5 µg/mL.</p> <p>Western Blot: Approx 70 kDa band observed in Human Heart lysates (calculated MW of 60.0 kDa according to NP_000231.1). The user is warned for non-specific background in Western blot. Recommended concentration: 0.1-0.3 µg/mL. Primary incubation was 1 hour.</p> <p>Peptide ELISA: antibody detection limit dilution 1:64000.</p>
Restrictions:	For Research Use only

Handling

Format:	Liquid
Concentration:	0.5 mg/mL
Buffer:	Supplied at 0.5 mg/mL in Tris saline, 0.02 % sodium azide, pH 7.3 with 0.5 % bovine serum albumin.
Preservative:	Sodium azide
Precaution of Use:	This product contains Sodium azide: a POISONOUS AND HAZARDOUS SUBSTANCE which should be handled by trained staff only.
Handling Advice:	Minimize freezing and thawing.
Storage:	-20 °C
Storage Comment:	Aliquot and store at -20°C, with minimal freeze/thawing. A working aliquot may be refrigerated at 4°C for a few weeks and still remain viable.



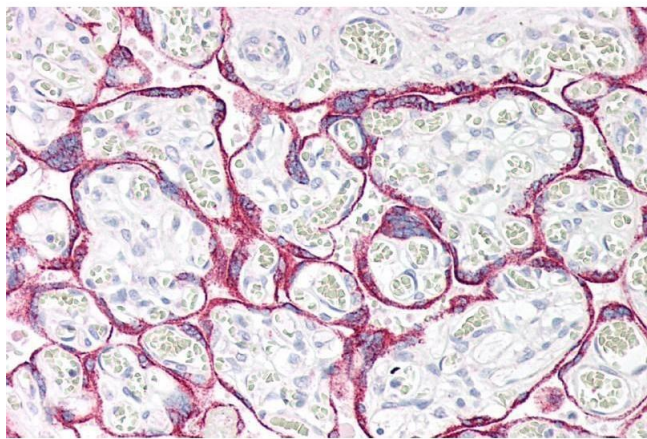
Immunohistochemistry

Image 1. ABIN185474 (5µg/ml) staining of paraffin embedded Human Small Intestine. Steamed antigen retrieval with citrate buffer pH 6, AP-staining.



Western Blotting

Image 2. ABIN185474 (0.3µg/ml) staining of Human Heart lysate (35µg protein in RIPA buffer) with (B) and without (A) blocking with the immunising peptide. Detected by chemiluminescence.



Immunohistochemistry

Image 3. ABIN185474 (5µg/ml) staining of paraffin embedded Human Placenta. Steamed antigen retrieval with citrate buffer pH 6, AP-staining.