



[Go to Product page](#)

Datasheet for ABIN185475

anti-Clusterin antibody (C-Term)

5 Images

Overview

| | |
|----------------------|---|
| Quantity: | 100 µg |
| Target: | Clusterin (CLU) |
| Binding Specificity: | C-Term |
| Reactivity: | Human |
| Host: | Goat |
| Clonality: | Polyclonal |
| Conjugate: | This Clusterin antibody is un-conjugated |
| Application: | Western Blotting (WB), Immunohistochemistry (IHC), ELISA, Immunofluorescence (IF) |

Product Details

| | |
|-------------------|---|
| Purpose: | Clusterin / APOJ |
| Immunogen: | Peptide with sequence C-EKALQEYRKKHREE, from the C Terminus of the protein sequence according to NP_001822.2, NP_976084.1. |
| Sequence: | EKALQEYRKK HREE |
| Isotype: | IgG |
| Specificity: | This antibody is expected to recognise both reported isoforms (NP_001822.2 and NP_976084.1) |
| Cross-Reactivity: | Dog, Human |
| Purification: | Purified from goat serum by ammonium sulphate precipitation followed by antigen affinity chromatography using the immunizing peptide. |

Product Details

Grade: Verified

Target Details

Target: Clusterin (CLU)

Alternative Name: CLU ([CLU Products](#))

Background: CLU, APOJ, clusterin, complement lysis inhibitor, SP-40,40, sulfated glycoprotein 2, testosterone-repressed prostate message 2, apolipoprotein J , HGNC:2095, CLI, MGC24903, SGP-2, SGP2, SP-40, TRPM-2, TRPM2 , apolipoprotein J, clusterin, complement-associ

Gene ID: 1191

NCBI Accession: [NP_001822](#), [NP_976084](#)

Pathways: [Apoptosis](#), [Negative Regulation of intrinsic apoptotic Signaling](#)

Application Details

Application Notes: Immunohistochemistry: Paraffin embedded Human Tonsil. Recommended concentration: 2.5 µg/mL.

Western Blot: Approx 35-37 kDa band observed in Human Colon and Prostate lysates (calculated MW of 57.8 kDa according to NP_NP_001822.2 and 52.5 according to NP_976084.1). The observed molecular weight corresponds to earlier findings in literature (PMID: 9

Peptide ELISA: antibody detection limit dilution 1:64000.

Comment: **Immunofluorescence:** Strong expression of the protein seen in the cytoplasm of HeLa cells. Recommended concentration: 10µg/ml

Restrictions: For Research Use only

Handling

Format: Liquid

Concentration: 0.5 mg/mL

Buffer: Supplied at 0.5 mg/mL in Tris saline, 0.02 % sodium azide, pH 7.3 with 0.5 % bovine serum albumin.

Preservative: Sodium azide

Precaution of Use: This product contains Sodium azide: a POISONOUS AND HAZARDOUS SUBSTANCE which

Handling

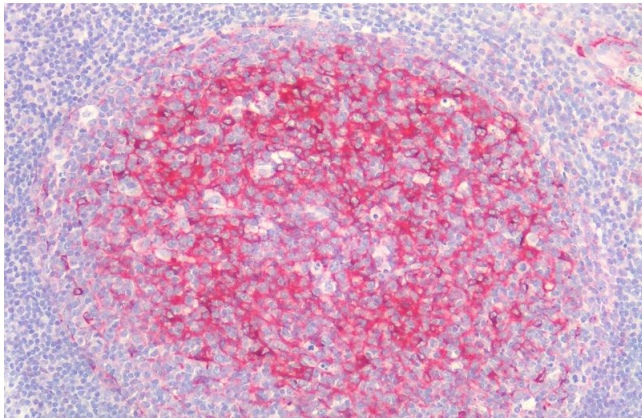
should be handled by trained staff only.

Handling Advice: Minimize freezing and thawing.

Storage: -20 °C

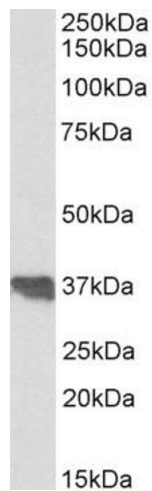
Storage Comment: Aliquot and store at -20°C, with minimal freeze/thawing. A working aliquot may be refrigerated at 4°C for a few weeks and still remain viable.

Images



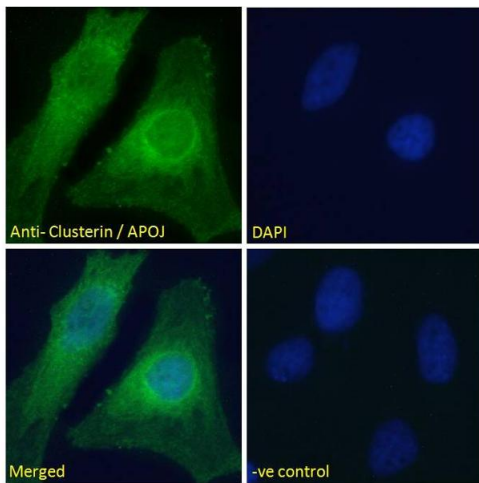
Immunohistochemistry

Image 1. ABIN185475 (2.5 µg/mL) staining of paraffin embedded Human Tonsil. Steamed antigen retrieval with citrate buffer pH 6, AP-staining.



Western Blotting

Image 2. ABIN185475 (0.1 µg/ml) staining of Human Colon lysate (35 µg protein in RIPA buffer). Detected by chemiluminescence.



Immunofluorescence

Image 3. ABIN185475 Immunofluorescence analysis of paraformaldehyde fixed HeLa cells, permeabilized with 0.15% Triton. Primary incubation 1hr (10ug/ml) followed by Alexa Fluor 488 secondary antibody (2ug/ml), showing ER/cytoplasmic staining. The nuclear stain is DAPI (blue). Negative control: Unimmunized goat IgG (10ug/ml) followed by Alexa Fluor 488 secondary antibody (2ug/ml).

Please check the [product details page](#) for more images. Overall 5 images are available for ABIN185475.