

Datasheet for ABIN185477

**anti-Adenosine A2b Receptor antibody (C-Term)**

5 Images

[Go to Product page](#)

## Overview

Quantity:	100 µg
Target:	Adenosine A2b Receptor (ADORA2B)
Binding Specificity:	C-Term
Reactivity:	Human
Host:	Goat
Clonality:	Polyclonal
Conjugate:	This Adenosine A2b Receptor antibody is un-conjugated
Application:	ELISA, Immunofluorescence (IF), Immunohistochemistry (IHC), Flow Cytometry (FACS)

## Product Details

Purpose:	Adenosine A2b Receptor
Immunogen:	Peptide with sequence CQADVKSGNGQ, from the C Terminus of the protein sequence according to NP_000667.1.
Sequence:	CQADVKSGNG Q
Isotype:	IgG
Cross-Reactivity:	Human
Purification:	Purified from goat serum by ammonium sulphate precipitation followed by antigen affinity chromatography using the immunizing peptide.
Grade:	Verified

## Target Details

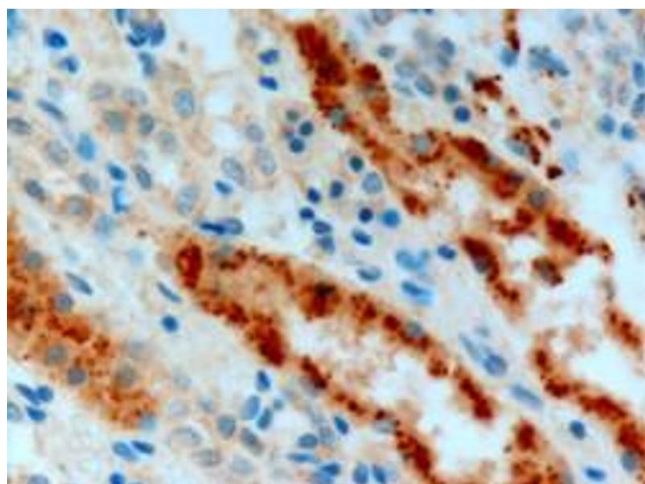
Target:	Adenosine A2b Receptor (ADORA2B)
Alternative Name:	ADORA2B ( <a href="#">ADORA2B Products</a> )
Background:	ADORA2B, adenosine A2b receptor, HGNC:264, ADORA2, netrin-1 receptor
Gene ID:	136
NCBI Accession:	<a href="#">NP_000667</a>
Pathways:	<a href="#">cAMP Metabolic Process</a> , <a href="#">Regulation of Leukocyte Mediated Immunity</a> , <a href="#">Positive Regulation of Immune Effector Process</a>

## Application Details

Application Notes:	Immunohistochemistry: In paraffin embedded Human Kidney shows cytoplasm staining in cells of renal tubules. Recommended concentration: 2-4 µg/mL. Peptide ELISA: antibody detection limit dilution 1:64000.
Comment:	<b>Immunofluorescence:</b> Strong expression of the protein seen in the cytoplasm of A431 and U2OS cells. Recommended concentration: 10µg/ml. <b>Flow Cytometry:</b> Flow cytometric analysis of Kelly cells. Recommended concentration
Restrictions:	For Research Use only

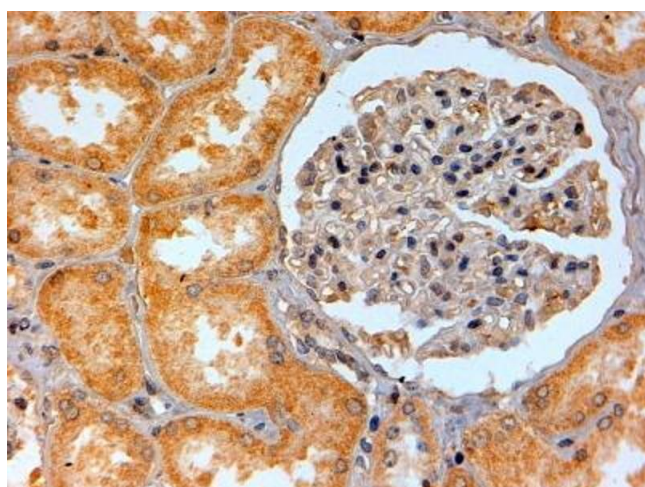
## Handling

Format:	Liquid
Concentration:	0.5 mg/mL
Buffer:	Supplied at 0.5 mg/mL in Tris saline, 0.02 % sodium azide, pH 7.3 with 0.5 % bovine serum albumin.
Preservative:	Sodium azide
Precaution of Use:	This product contains Sodium azide: a POISONOUS AND HAZARDOUS SUBSTANCE which should be handled by trained staff only.
Handling Advice:	Minimize freezing and thawing.
Storage:	-20 °C
Storage Comment:	Aliquot and store at -20°C, with minimal freeze/thawing. A working aliquot may be refrigerated at 4°C for a few weeks and still remain viable.



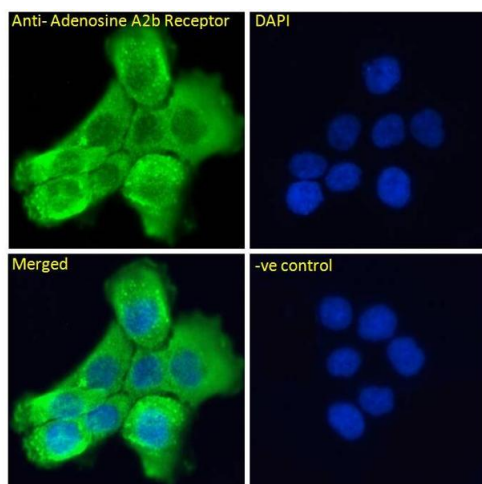
#### Immunohistochemistry

**Image 1.** ABIN185477 (3µg/ml) staining of paraffin embedded Human Kidney. Microwaved antigen retrieval with Tris/EDTA buffer pH9, HRP-staining.



#### Immunohistochemistry

**Image 2.** ABIN185477 (2µg/ml) staining of paraffin embedded Human Kidney. Steamed antigen retrieval with citrate buffer pH 6, HRP-staining.



#### Immunofluorescence

**Image 3.** ABIN185477 Immunofluorescence analysis of paraformaldehyde fixed A431 cells, permeabilized with 0.15% Triton. Primary incubation 1hr (10ug/ml) followed by Alexa Fluor 488 secondary antibody (2ug/ml), showing cytoplasmic staining. The nuclear stain is DAPI (blue). Negative control: Unimmunized goat IgG (10ug/ml) followed by Alexa Fluor 488 secondary antibody (2ug/ml).

Please check the [product details page](#) for more images. Overall 5 images are available for ABIN185477.