

Datasheet for ABIN185480
anti-DARC antibody (N-Term)

5 Images

[Go to Product page](#)

Overview

Quantity:	100 µg
Target:	DARC
Binding Specificity:	N-Term
Reactivity:	Human
Host:	Goat
Clonality:	Polyclonal
Conjugate:	This DARC antibody is un-conjugated
Application:	Western Blotting (WB), ELISA, Immunohistochemistry (IHC), Flow Cytometry (FACS)

Product Details

Purpose:	Duffy / FY / DARC
Immunogen:	Peptide with sequence HRAELSPSTENSSQLDFED-C, from the N Terminus of the protein sequence according to NP_001116423.1, NP_002027.2.
Sequence:	HRAELSPSTE NSSQLDFED
Isotype:	IgG
Specificity:	This antibody is expected to recognize both reported isoforms (NP_001116423.1, NP_002027.2).
Cross-Reactivity:	Human
Purification:	Purified from goat serum by ammonium sulphate precipitation followed by antigen affinity chromatography using the immunizing peptide.

Product Details

Grade: Verified

Target Details

Target: DARC

Alternative Name: ACKR1 ([DARC Products](#))

Background: FY, DARC, HGNC:4035, Duffy blood group, CCBP1, GPD, CTA-134P22.3, CD234, FY, OTTHUMP00000060081, Duffy blood group, chemokine receptor, Duffy blood group antigen, Glycoprotein D, Dfy, GpFy, WBCQ1, Fy glycoprotein, OTTHUMP00000035293, OTTHUMP00000035294

Gene ID: 2532

NCBI Accession: [NP_001116423](#), [NP_002027](#)

Application Details

Application Notes: Immunohistochemistry: In paraffin embedded Human Kidney stains epithelial cells of renal tubules and endothelial cells of vessels. The granular staining is compatible with the endoplasmic reticulum association of the protein. Recommended concentration: 3
Western Blot: Approx 37 kDa band observed in Human Liver lysates (calculated MW of 35.6 kDa according to NP_002027.2). Recommended concentration: 0.3-1 µg/mL. Primary incubation was 1 hour.
Peptide ELISA: antibody detection limit dilution 1:16000.

Comment: **Flow cytometry:** Flow cytometric analysis of HEK293 cells. Recommended concentration: 10ug/ml. A customer has reported successful staining of HEK293S-TetR transfected with DARC receptor at a dilution of 1/1000.

Restrictions: For Research Use only

Handling

Format: Liquid

Concentration: 0.5 mg/mL

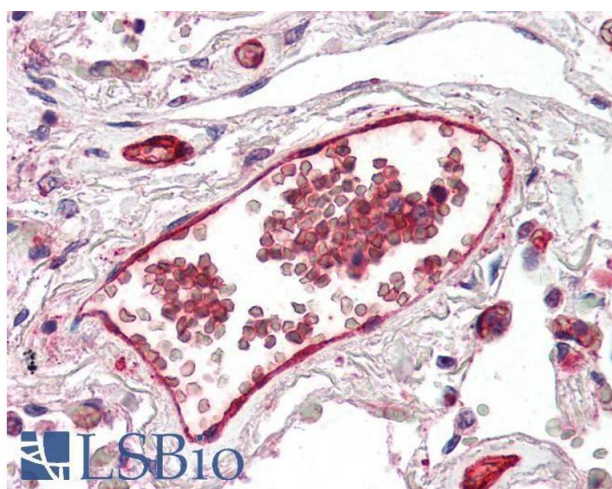
Buffer: Supplied at 0.5 mg/mL in Tris saline, 0.02 % sodium azide, pH 7.3 with 0.5 % bovine serum albumin.

Preservative: Sodium azide

Handling

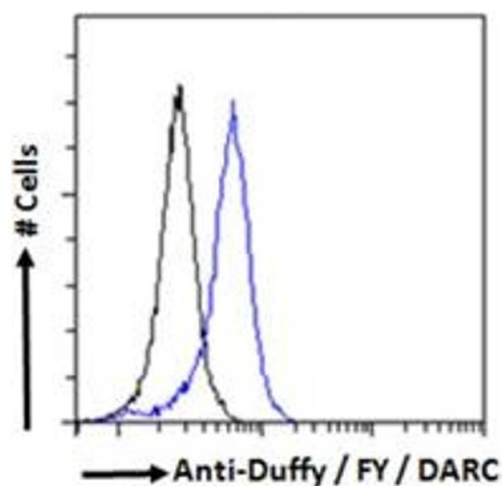
Precaution of Use:	This product contains Sodium azide: a POISONOUS AND HAZARDOUS SUBSTANCE which should be handled by trained staff only.
Handling Advice:	Minimize freezing and thawing.
Storage:	-20 °C
Storage Comment:	Aliquot and store at -20°C, with minimal freeze/thawing. A working aliquot may be refrigerated at 4°C for a few weeks and still remain viable.

Images



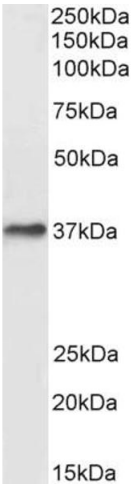
Immunohistochemistry

Image 1. ABIN185480 (5µg/ml) staining of paraffin embedded Human Lung. Microwaved antigen retrieval with citrate buffer Ph 6, AP-staining.



Flow Cytometry

Image 2. Flow cytometric analysis of paraformaldehyde fixed HEK293 cells (blue line), permeabilized with 0.5% Triton. Primary incubation 1hr (10ug/ml) followed by Alexa Fluor 488 secondary antibody (0.4ug/ml). IgG control: Unimmunized goat IgG (black line) followe



Western Blotting

Image 3. ABIN185480 (0.3µg/ml) staining of Human Liver lysate (35µg protein in RIPA buffer). Detected by chemiluminescence.

Please check the [product details page](#) for more images. Overall 5 images are available for ABIN185480.