

Datasheet for ABIN1854822
anti-ACTC1 antibody (N-Term)[Go to Product page](#)

1 Image

Overview

Quantity:	100 µL
Target:	ACTC1
Binding Specificity:	N-Term
Reactivity:	Human, Mouse, Rat
Host:	Mouse
Clonality:	Monoclonal
Application:	Western Blotting (WB), Immunohistochemistry (IHC), Immunofluorescence (fixed cells) (IF/ICC)

Product Details

Immunogen:	A synthetic peptide (conjugated to KLH) corresponding to the N-terminal residues of alpha-Actin.
Isotype:	IgG1
Specificity:	Alpha Actin (Cardiac actin) Antibody is a Mouse Monoclonal antibody against Human, Mouse and Rat.
Purification:	Protein A or Protein G purified

Target Details

Target:	ACTC1
Alternative Name:	Actin Alpha 1, Cardiac Muscle (ACTC1 Products)
Gene ID:	70

Target Details

UniProt:	P68032
Pathways:	Myometrial Relaxation and Contraction

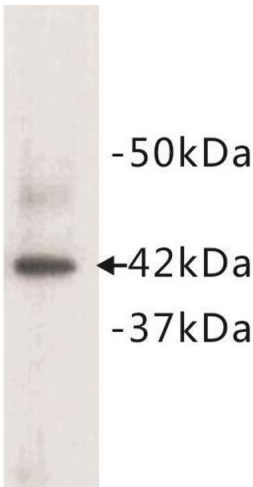
Application Details

Application Notes:	Optimal working dilution should be determined by the investigator.
Restrictions:	For Research Use only

Handling

Format:	Liquid
Buffer:	TBS (pH 7.4), 0.5 % BSA, 40 % Glycerol and 0.05 % Sodium Azide.
Preservative:	Sodium azide
Precaution of Use:	This product contains Sodium azide: a POISONOUS AND HAZARDOUS SUBSTANCE which should be handled by trained staff only.
Handling Advice:	Avoid exposure to light.
Storage:	4 °C,-20 °C
Storage Comment:	For short-term storage, store at store at 4 °C for up to one week. For long-term storage, aliquot and store at -20 °C. Avoid repeated freeze/thaw cycles.
Expiry Date:	12 months

Images



Western Blotting

Image 1. Western blot analysis of mouse heart tissue lysate, using alpha Actin (Cardiac actin) antibody.