

Datasheet for ABIN185483

anti-PEPCK antibody (Internal Region)

6 Images

1 Publication

[Go to Product page](#)

Overview

Quantity:	100 µg
Target:	PEPCK
Binding Specificity:	Internal Region
Reactivity:	Human, Mouse
Host:	Goat
Clonality:	Polyclonal
Conjugate:	This PEPCK antibody is un-conjugated
Application:	Western Blotting (WB), ELISA, Immunofluorescence (IF), Flow Cytometry (FACS)

Product Details

Purpose:	PCK2 / PEPCK-M
Immunogen:	Peptide with sequence KPWKPGDKEPCAH, from the internal region of the protein sequence according to NP_004554.2.
Sequence:	KPWKPGDKEP CAH
Isotype:	IgG
Specificity:	No cross-reactivity with PCK1.
Cross-Reactivity:	Cow, Dog, Human, Mouse, Pig, Rat
Purification:	Purified from goat serum by ammonium sulphate precipitation followed by antigen affinity chromatography using the immunizing peptide.
Grade:	Verified

Target Details

Target:	PEPCK
Alternative Name:	PCK2 (PEPCK Products)
Background:	PCK2, PEPCK-M, phosphoenolpyruvate carboxykinase 2 (mitochondrial), HGNC:8725, PEPCK, PEPCK2 , PEP carboxykinase, mitochondrial phosphoenolpyruvate carboxykinase 2, phosphoenolpyruvate carboxylase, phosphopyruvate carboxylase
Gene ID:	5106
NCBI Accession:	NP_004554
Pathways:	Positive Regulation of Peptide Hormone Secretion , Carbohydrate Homeostasis

Application Details

Application Notes:	Western Blot: Approx 70 kDa band observed in lysates of cell lines A431, HEK293 HepG2 and NIH3T3 (calculated MW of 70.7 kDa according to Human NP_004554.3 and 70.5 kDa according to Mouse NP_083270.2). Recommended concentration: 1-3 µg/mL. Primary incubatio Peptide ELISA: antibody detection limit dilution 1:4000.
Comment:	Immunofluorescence: Strong expression of the protein seen in the cytoplasm of U2OS cells. Recommended concentration: 10µg/ml. Flow Cytometry: Flow cytometric analysis of MCF7 cells. Recommended concentration: 10ug/ml.<
Restrictions:	For Research Use only

Handling

Format:	Liquid
Concentration:	0.5 mg/mL
Buffer:	Supplied at 0.5 mg/mL in Tris saline, 0.02 % sodium azide, pH 7.3 with 0.5 % bovine serum albumin.
Preservative:	Sodium azide
Precaution of Use:	This product contains Sodium azide: a POISONOUS AND HAZARDOUS SUBSTANCE which should be handled by trained staff only.
Handling Advice:	Minimize freezing and thawing.
Storage:	-20 °C

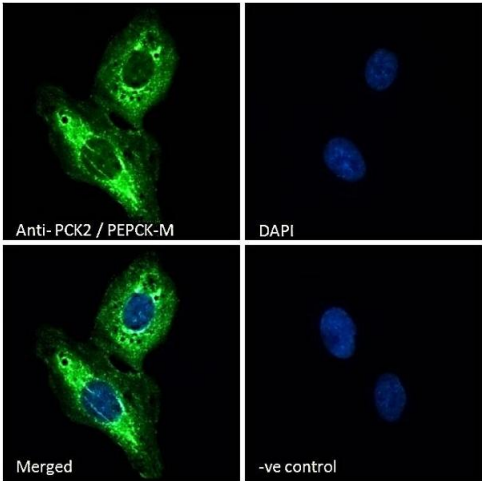
Handling

Storage Comment: Aliquot and store at -20°C, with minimal freeze/thawing. A working aliquot may be refrigerated at 4°C for a few weeks and still remain viable.

Publications

Product cited in: Méndez-Lucas, Duarte, Sunny, Satapati, He, Fu, Bermúdez, Burgess, Perales: "PEPCK-M expression in mouse liver potentiates, not replaces, PEPCK-C mediated gluconeogenesis." in: **Journal of hepatology**, Vol. 59, Issue 1, pp. 105-13, (2013) ([PubMed](#)).

Images

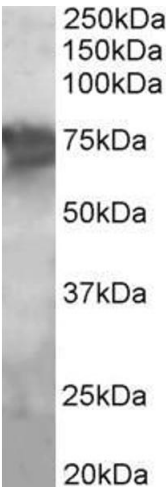


Immunofluorescence

Image 1. (ABIN185483) Immunofluorescence analysis of paraformaldehyde fixed U2OS cells, permeabilized with 0.15 % Triton. Primary incubation 1hr (10 µg/mL) followed by Alexa Fluor 488 secondary antibody (2 µg/mL), showing cytoplasmic staining. The nuclear stain is DAPI (b



Image 2. ABIN185483 (0.5µg/ml) staining of human liver lysate (35µg protein in RIPA buffer). Primary incubation was 1 hour. Detected by chemiluminescence.



Western Blotting

Image 3. ABIN185483 (2µg/ml) staining of Human Liver lysate (35µg protein in RIPA buffer). Primary incubation was 1 hour. Detected by chemiluminescence.

Please check the [product details page](#) for more images. Overall 6 images are available for ABIN185483.