

Datasheet for ABIN185484

anti-CNR1 antibody (Internal Region)

3 Images

1 Publication

[Go to Product page](#)

Overview

Quantity:	100 µg
Target:	CNR1
Binding Specificity:	Internal Region
Reactivity:	Human
Host:	Goat
Clonality:	Polyclonal
Conjugate:	This CNR1 antibody is un-conjugated
Application:	Western Blotting (WB), ELISA

Product Details

Purpose:	Cannabinoid Receptor 1
Immunogen:	Peptide with sequence C-HTSEDGKVQVTRPDQ, from the internal region of the protein sequence according to NP_057167.2, NP_001153732.1, NP_001153731.1, NP_001153730.1, NP_001153698.1, NP_149421.1.
Sequence:	HTSEDGKVQV TRPDQ
Isotype:	IgG
Specificity:	This antibody is expected to recognise both reported isoforms. Isoform a (NP_057167.2, NP_001153732.1, NP_001153731.1, NP_001153730.1, NP_001153698.1) and isoform b (NP_149421.1).
Cross-Reactivity:	Dog, Human, Mouse, Rat

Product Details

Purification: Purified from goat serum by ammonium sulphate precipitation followed by antigen affinity chromatography using the immunizing peptide.

Grade: Verified

Target Details

Target: CNR1

Alternative Name: CNR1 ([CNR1 Products](#))

Background: Cannabinoid receptor 1 (brain), CNR1, HGNC:2159, CANN6, CB-R, CB1, CB1A, CB1K5, CNR, central cannabinoid receptor, RP1-23D17.1, CB1R, cannabinoid receptor 1
OTTHUMP00000016838, OTTHUMP00000016839

Gene ID: 1268, 12801, 25248

NCBI Accession: [NP_057167](#), [NP_001153732](#), [NP_001153731](#), [NP_001153730](#), [NP_001153698](#), [NP_149421](#)

Pathways: [Feeding Behaviour](#)

Application Details

Application Notes: Western Blot: Approx 55 kDa (non-glycosylated) and 65 kDa (glycosylated) bands observed in lysates of cell line HeLa (calculated MW of 52.9 kDa according to NP_057167.2). Both bands were successfully blocked by incubation with the immunizing peptide, Reco
Peptide ELISA: antibody detection limit dilution 1:32000.

Restrictions: For Research Use only

Handling

Format: Liquid

Concentration: 0.5 mg/mL

Buffer: Supplied at 0.5 mg/mL in Tris saline, 0.02 % sodium azide, pH 7.3 with 0.5 % bovine serum albumin.

Preservative: Sodium azide

Precaution of Use: This product contains Sodium azide: a POISONOUS AND HAZARDOUS SUBSTANCE which should be handled by trained staff only.

Handling Advice: Minimize freezing and thawing.

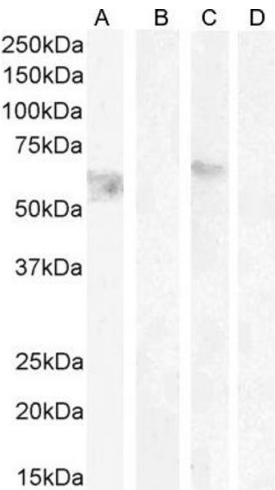
Handling

Storage:	-20 °C
Storage Comment:	Aliquot and store at -20°C, with minimal freeze/thawing. A working aliquot may be refrigerated at 4°C for a few weeks and still remain viable.

Publications

Product cited in:	Fügedi, Molnár, Rigó, Schönléber, Kovalszky, Molvarec: "Increased placental expression of cannabinoid receptor 1 in preeclampsia: an observational study." in: BMC pregnancy and childbirth , Vol. 14, pp. 395, (2015) (PubMed).
-------------------	---

Images



Western Blotting

Image 1. ABIN185484 (1 µg/mL) staining of HeLa lysate non-glycosylated (A) + peptide (B) and (0.5 µg/mL) HeLa lysate glycosylated (C) + peptide (D),(35 µg protein in RIPA buffer). Detected by chemiluminescence.



Western Blotting

Image 2. ABIN185484 (0.1µg/ml) staining of Rat Brain lysate (35µg protein in RIPA buffer). Detected by chemiluminescence.



Image 3. ABIN185484 (1µg/ml) staining of human brain lysate (35µg protein in RIPA buffer). Primary incubation was 1 hour. Detected by chemiluminescence.