

Datasheet for ABIN185486

**anti-CD235a/GYPA antibody (C-Term)****3** Images[Go to Product page](#)

## Overview

Quantity:	100 µg
Target:	CD235a/GYPA (GYPA)
Binding Specificity:	C-Term
Reactivity:	Human
Host:	Goat
Clonality:	Polyclonal
Conjugate:	This CD235a/GYPA antibody is un-conjugated
Application:	Western Blotting (WB), ELISA

## Product Details

Purpose:	Glycophorin A
Immunogen:	Peptide with sequence C-SVEIENPETSQ, from the C Terminus of the protein sequence according to NP_002090.2.
Sequence:	SVEIENPETS DQ
Isotype:	IgG
Cross-Reactivity:	Human
Purification:	Purified from goat serum by ammonium sulphate precipitation followed by antigen affinity chromatography using the immunizing peptide.
Grade:	Verified

## Target Details

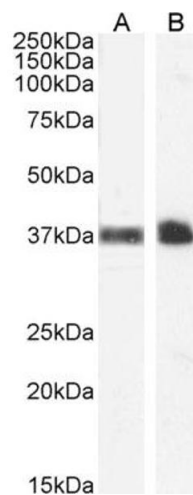
Target:	CD235a/GYPa (GYPa)
Alternative Name:	GYPa ( <a href="#">GYPa Products</a> )
Background:	GYPa, glycophorin A (includes MN blood group), HGNC:4702, GPA, GPErik, GPSAT, HGpMiV, HGpMiX, HGpMiXI, HGpSta(C), MN, MNS, Mi.V glycoprotein (24 AA), erythroid-lineage-specific membrane sialoglycoprotein, glycophorin A, glycophorin A, GPA, glycophorin Eri
Gene ID:	2993
NCBI Accession:	<a href="#">NP_002090</a>
Pathways:	<a href="#">Maintenance of Protein Location</a>

## Application Details

Application Notes:	Western Blot: Approx 37-38 kDa band observed in Human Peripheral Blood Monocytes and Kidney lysates (calculated MW of 16.4 kDa according to NP_002090.2). The observed molecular weight corresponds to earlier findings with different antibodies from other com Peptide ELISA: antibody detection limit dilution 1:2000.
Restrictions:	For Research Use only

## Handling

Format:	Liquid
Concentration:	0.5 mg/mL
Buffer:	Supplied at 0.5 mg/mL in Tris saline, 0.02 % sodium azide, pH 7.3 with 0.5 % bovine serum albumin.
Preservative:	Sodium azide
Precaution of Use:	This product contains Sodium azide: a POISONOUS AND HAZARDOUS SUBSTANCE which should be handled by trained staff only.
Handling Advice:	Minimize freezing and thawing.
Storage:	-20 °C
Storage Comment:	Aliquot and store at -20°C, with minimal freeze/thawing. A working aliquot may be refrigerated at 4°C for a few weeks and still remain viable.

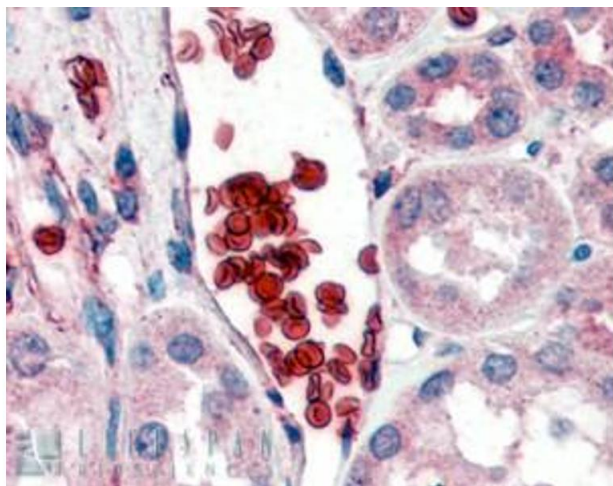


### Western Blotting

**Image 1.** ABIN185486 (1 µg/mL) staining of Human Peripheral Blood Monocytes (A) and Kidney (B) lysate (35 µg protein in RIPA buffer). Detected by chemiluminescence.



**Image 2.** ABIN185486 (1 µg/ml) staining of human liver lysate (35 µg protein in RIPA buffer). Primary incubation was 1 hour. Detected by chemiluminescence.



### Immunohistochemistry

**Image 3.** ABIN185486 (2 µg/ml) staining of paraffin embedded Human Kidney. Steamed antigen retrieval with citrate buffer pH 6, AP-staining.