

Datasheet for ABIN185487

anti-ENPP1 antibody (C-Term)

7 Images

2 Publications

[Go to Product page](#)

Overview

Quantity:	100 µg
Target:	ENPP1
Binding Specificity:	C-Term
Reactivity:	Human
Host:	Goat
Clonality:	Polyclonal
Conjugate:	This ENPP1 antibody is un-conjugated
Application:	ELISA, Immunohistochemistry (IHC)

Product Details

Purpose:	ENPP1 / PC1
Immunogen:	Peptide with sequence C-KTHLPTFSQED, from the C Terminus of the protein sequence according to NP_006199.2.
Sequence:	KTHLPTFSQE D
Isotype:	IgG
Cross-Reactivity:	Human, Mouse, Rat
Purification:	Purified from goat serum by ammonium sulphate precipitation followed by antigen affinity chromatography using the immunizing peptide.
Grade:	Verified

Target Details

Target:	ENPP1
Alternative Name:	ENPP1 (ENPP1 Products)
Background:	ENPP1, PC-1, ectonucleotide pyrophosphatase/phosphodiesterase 1, HGNC:3356, M6S1, NPP1, NPPS, PCA1, PDNP1, Ly-41 antigen, OTTHUMP00000043194, alkaline phosphodiesterase 1, membrane component, chromosome 6, surface marker 1, phosphodiesterase I/nucleotide
Gene ID:	5167
NCBI Accession:	NP_006199
Pathways:	Regulation of Carbohydrate Metabolic Process

Application Details

Application Notes:	Immunohistochemistry: Paraffin embedded Human Thyroid Gland. Recommended concentration: 4 µg/mL. Western Blot: Preliminary testing showed bands at approx., 25+150 kDa in Human Liver lysates after 0.5-1 µg/mL antibody staining (calculated Mwt of 105 kDa according to NP_006199.2). Both bands were successfully blocked by incubation with the immunizing pep Peptide ELISA: antibody detection limit dilution 1:64000.
Restrictions:	For Research Use only

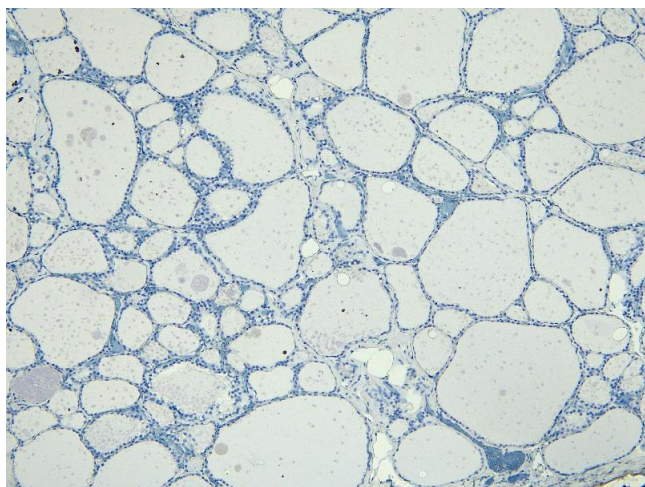
Handling

Format:	Liquid
Concentration:	0.5 mg/mL
Buffer:	Supplied at 0.5 mg/mL in Tris saline, 0.02 % sodium azide, pH 7.3 with 0.5 % bovine serum albumin.
Preservative:	Sodium azide
Precaution of Use:	This product contains Sodium azide: a POISONOUS AND HAZARDOUS SUBSTANCE which should be handled by trained staff only.
Handling Advice:	Minimize freezing and thawing.
Storage:	-20 °C
Storage Comment:	Aliquot and store at -20°C, with minimal freeze/thawing. A working aliquot may be refrigerated at 4°C for a few weeks and still remain viable.

Publications

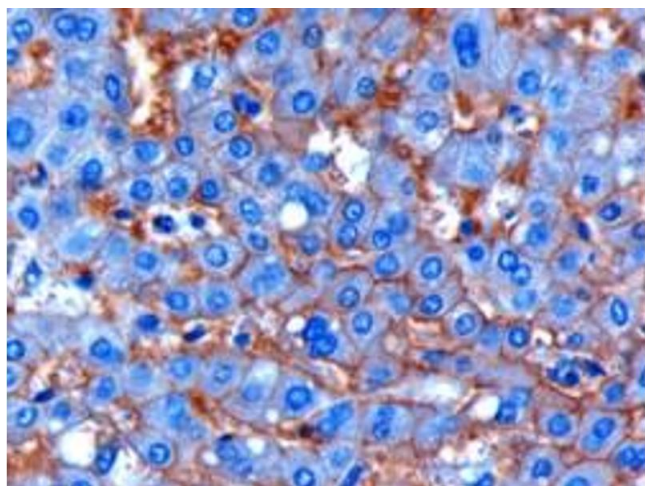
- Product cited in: Lau, Doucet, Stadel, Huang, Weber, Kominsky: "Enpp1: a potential facilitator of breast cancer bone metastasis." in: **PLoS ONE**, Vol. 8, Issue 7, pp. e66752, (2013) ([PubMed](#)).
- Simão, Yadav, Narisawa, Bolean, Pizauro, Hoylaerts, Ciancaglini, Millán: "Proteoliposomes harboring alkaline phosphatase and nucleotide pyrophosphatase as matrix vesicle biomimetics." in: **The Journal of biological chemistry**, Vol. 285, Issue 10, pp. 7598-609, (2010) ([PubMed](#)).

Images



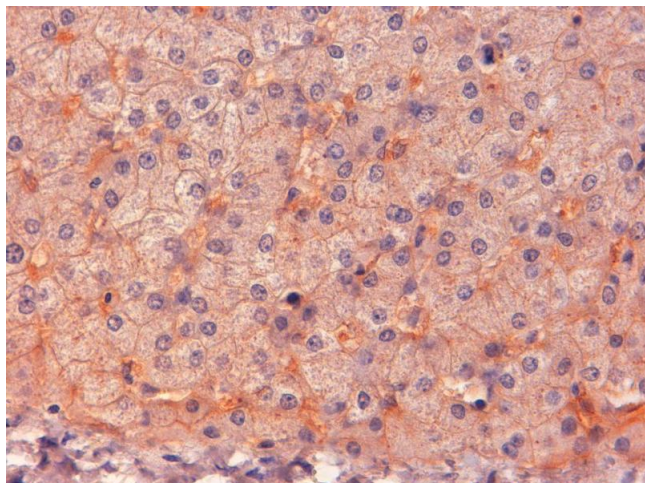
Immunohistochemistry

Image 1. (ABIN185487) Negative Control showing staining of paraffin embedded Human Thyroid Gland, with no primary antibody.



Immunohistochemistry

Image 2. ABIN185487 (1µg/ml) staining of paraffin embedded Human Liver. Microwaved antigen retrieval with citrate buffer pH 6, HRP-staining.



Immunohistochemistry

Image 3. ABIN185487 (2µg/ml) staining of paraffin embedded Human Liver. Steamed antigen retrieval with Tris/EDTA buffer pH 9, HRP-staining.

Please check the [product details page](#) for more images. Overall 7 images are available for ABIN185487.