

Datasheet for ABIN185491
anti-CBX5 antibody (Internal Region)

8 Images

[Go to Product page](#)

Overview

Quantity:	100 µg
Target:	CBX5
Binding Specificity:	Internal Region
Reactivity:	Human
Host:	Goat
Clonality:	Polyclonal
Conjugate:	This CBX5 antibody is un-conjugated
Application:	Western Blotting (WB), ELISA, Immunofluorescence (IF), Flow Cytometry (FACS)

Product Details

Purpose:	CBX5 / HP1-Alpha
Immunogen:	Peptide with sequence C-NKRKSNFSNSADDIK, from the internal region of the protein sequence according to NP_036249.1, NP_001120793.1, NP_001120794.1.
Sequence:	NKRKSNFSNS ADDIK
Isotype:	IgG
Specificity:	Variants (NP_036249.1, NP_001120793.1, NP_001120794.1) encode the same protein.
Cross-Reactivity:	Dog, Human, Mouse
Purification:	Purified from goat serum by ammonium sulphate precipitation followed by antigen affinity chromatography using the immunizing peptide.
Grade:	Verified

Target Details

Target:	CBX5
Alternative Name:	CBX5 (CBX5 Products)
Background:	CBX5, HP1-ALPHA, chromobox homolog 5 (HP1 alpha homolog, Drosophila), HGNC:1555, HP1, HP1Hs-alpha , chromobox homolog 5 (Drosophila HP1 alpha), Heterochromatin protein-1, HP1A, antigen p25, heterochromatin protein 1 homolog alpha, heterochromatin protein
Gene ID:	23468
NCBI Accession:	NP_036249 , NP_001120793 , NP_001120794

Application Details

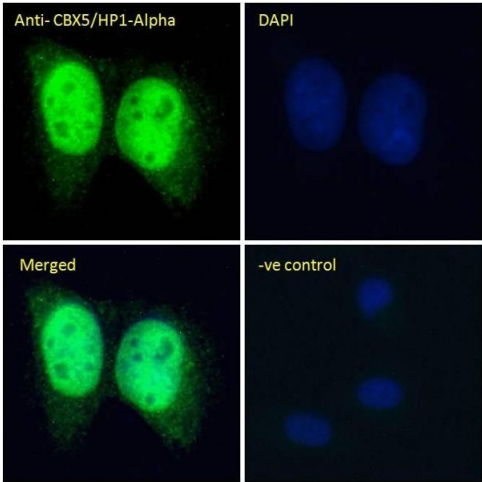
Application Notes:	Western Blot: Approx 24-25 kDa band observed in lysates of cell lines A43N and K562 (calculated MW of 22.2 kDa according to Human NP_036249.1). Recommended concentration: 0.03-0.1 µg/mL. Primary incubation 1 hour at room temperature. Peptide ELISA: antibody detection limit dilution 1:128000.
Comment:	Immunofluorescence: Strong expression of the protein seen in the nuclei of U2OS cells. Recommended concentration: 10µg/ml. Flow Cytometry: Flow cytometric analysis of HeLa cells. Recommended concentration: 10ug/ml.
Restrictions:	For Research Use only

Handling

Format:	Liquid
Concentration:	0.5 mg/mL
Buffer:	Supplied at 0.5 mg/mL in Tris saline, 0.02 % sodium azide, pH 7.3 with 0.5 % bovine serum albumin.
Preservative:	Sodium azide
Precaution of Use:	This product contains Sodium azide: a POISONOUS AND HAZARDOUS SUBSTANCE which should be handled by trained staff only.
Handling Advice:	Minimize freezing and thawing.
Storage:	-20 °C
Storage Comment:	Aliquot and store at -20°C, with minimal freeze/thawing. A working aliquot may be refrigerated

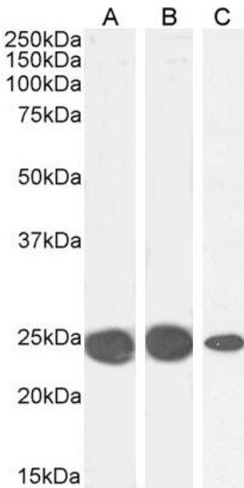
at 4°C for a few weeks and still remain viable.

Images



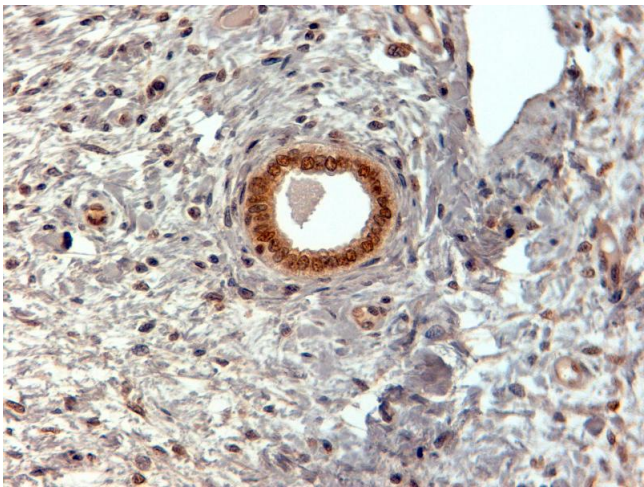
Immunofluorescence

Image 1. (ABIN185491) Immunofluorescence analysis of paraformaldehyde fixed U2OS cells, permeabilized with 0.15 % Triton. Primary incubation 1hr (10 µg/mL) followed by Alexa Fluor 488 secondary antibody (4 µg/mL), showing nuclear staining. The nuclear stain is DAPI (blue)



Western Blotting

Image 2. ABIN185491 (0.1µg/ml) staining of K562 (A), MCF7 (B) and NIH3T3 (C) cell lysate (35µg protein in RIPA buffer). Detected by chemiluminescence.



Immunohistochemistry

Image 3. ABIN185491 (2µg/ml) staining of paraffin embedded Human Uterus. Steamed antigen retrieval with citrate buffer pH 6, HRP-staining.

Please check the [product details page](#) for more images. Overall 8 images are available for ABIN185491.