



[Go to Product page](#)

Datasheet for ABIN185492

## anti-CBX1 antibody (Internal Region)

### 2 Images

#### Overview

Quantity:	100 µg
Target:	CBX1
Binding Specificity:	Internal Region
Reactivity:	Human
Host:	Goat
Clonality:	Polyclonal
Conjugate:	This CBX1 antibody is un-conjugated
Application:	Western Blotting (WB), ELISA, Immunohistochemistry (IHC)

#### Product Details

Purpose:	CBX1 / HP1-Beta
Immunogen:	Peptide with sequence C-QSQKTAHETDKSE, from the internal region of the protein sequence according to NP_006798.1, NP_001120700.1.
Sequence:	QSQKTAHETD KSE
Isotype:	IgG
Specificity:	Variants (NP_006798.1, NP_001120700.1) encode the same protein.
Cross-Reactivity:	Cow, Dog, Human, Mouse, Rat
Purification:	Purified from goat serum by ammonium sulphate precipitation followed by antigen affinity chromatography using the immunizing peptide.
Grade:	Verified

## Target Details

---

Target:	CBX1
Alternative Name:	CBX1 ( <a href="#">CBX1 Products</a> )
Background:	CBX1, HP1-BETA, chromobox homolog 1 (HP1 beta homolog Drosophila ), HGNC:1551, CBX, HP1Hs-beta, M31, MOD1, chromobox homolog 1 (Drosophila HP1 beta), heterochromatin protein p25 beta, HP1Hsbeta, p25beta, heterochromatin protein 1-beta, modifier 1 protein
Gene ID:	10951, 12412, 360609
NCBI Accession:	<a href="#">NP_006798</a> , <a href="#">NP_001120700</a>

## Application Details

---

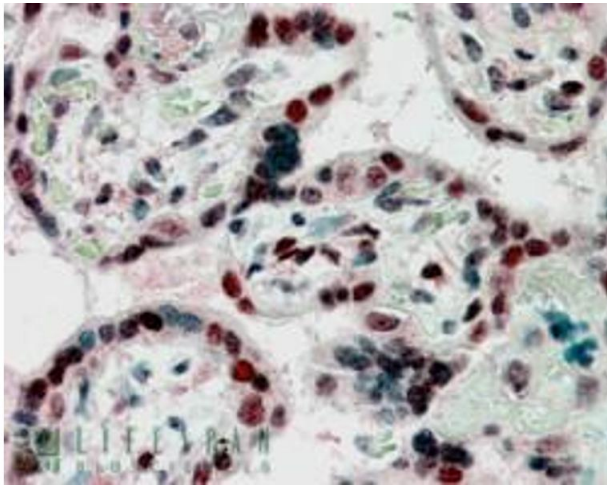
Application Notes:	Immunohistochemistry: In paraffin embedded Human Placenta shows strong nuclear staining in trophoblasts. Recommended concentration, 2-3 µg/mL. Western Blot: Approx. 25 kDa band observed in lysates of A431, HeLa and HepG2 (calculated MW of 25 kDa according to NP_006798.1). Recommended concentration: 0.3-1.0 µg/mL. Peptide ELISA: antibody detection limit dilution 1:32000.
--------------------	--

Restrictions:	For Research Use only
---------------	-----------------------

## Handling

---

Format:	Liquid
Concentration:	0.5 mg/mL
Buffer:	Supplied at 0.5 mg/mL in Tris saline, 0.02 % sodium azide, pH 7.3 with 0.5 % bovine serum albumin.
Preservative:	Sodium azide
Precaution of Use:	This product contains Sodium azide: a POISONOUS AND HAZARDOUS SUBSTANCE which should be handled by trained staff only.
Handling Advice:	Minimize freezing and thawing.
Storage:	-20 °C
Storage Comment:	Aliquot and store at -20°C, with minimal freeze/thawing. A working aliquot may be refrigerated at 4°C for a few weeks and still remain viable.



### Immunohistochemistry

**Image 1.** ABIN185492 (2.5µg/ml) staining of paraffin embedded Human Placenta. Steamed antigen retrieval with citrate buffer pH 6, AP-staining.



### Western Blotting

**Image 2.** ABIN185492 (0.3µg/ml) staining of A431 lysate (35µg protein in RIPA buffer). Primary incubation was 1 hour. Detected by chemiluminescence.