

Datasheet for ABIN185493

anti-CBX3 antibody (Internal Region)



[Go to Product page](#)

7 Images

1 Publication

Overview

Quantity:	100 µg
Target:	CBX3
Binding Specificity:	Internal Region
Reactivity:	Human, Mouse
Host:	Goat
Clonality:	Polyclonal
Conjugate:	This CBX3 antibody is un-conjugated
Application:	Western Blotting (WB), Immunohistochemistry (IHC), ELISA, Immunofluorescence (IF), Flow Cytometry (FACS)

Product Details

Purpose:	CBX3 / HP1 Gamma
Immunogen:	Peptide with sequence C-EAFLNSQKAGKEKD, from the internal region of the protein sequence according to NP_009207.2, NP_057671.2.
Sequence:	EAFLNSQKAG KEKD
Isotype:	IgG
Specificity:	No cross-reactivity expected with HP1-alpha and HP1-beta. Reported variants represent identical protein: NP_009207.2, NP_057671.2
Cross-Reactivity:	Cow, Dog, Human, Mouse, Rat
Purification:	Purified from goat serum by ammonium sulphate precipitation followed by antigen affinity

Product Details

chromatography using the immunizing peptide.

Grade: Verified

Target Details

Target: CBX3

Alternative Name: CBX3 ([CBX3 Products](#))

Background: CBX3, HP1-GAMMA, chromobox homolog 3 (HP1 gamma homolog, Drosophila) , HGNC:1553, HECH, HP1Hs-gamma , HP1 gamma homolog, chromobox homolog 3, chromobox homolog 3 (Drosophila HP1 gamma), heterochromatin protein HP1 gamma, heterochromatin-like protein 1

Gene ID: 11335, 12417, 297093

NCBI Accession: [NP_009207](#)

Application Details

Application Notes: Immunohistochemistry: In paraffin embedded Human Placenta shows strong nuclear staining in trophoblasts. Recommended concentration: 2-3 µg/mL.
Western Blot: Approx. 20 kDa band observed in lysates of cell lines A431, HeLa, HepG2, NIH3T3 and NSO (calculated MW of 20.8 kDa according to NP_009207.2 and NP_057671.2).
Recommended concentration: 0.3-1.0 µg/mL.
Peptide ELISA: antibody detection limit dilution 1:32000.

Comment: **Immunofluorescence:** Strong expression of the protein seen in HeLa and U2OS cells.
Recommended concentration: 10µg/ml.
Flow Cytometry: Flow cytometric analysis of HeLa cells. Recommended concentration: 10ug/ml.

Restrictions: For Research Use only

Handling

Format: Liquid

Concentration: 0.5 mg/mL

Buffer: Supplied at 0.5 mg/mL in Tris saline, 0.02 % sodium azide, pH 7.3 with 0.5 % bovine serum albumin.

Preservative: Sodium azide

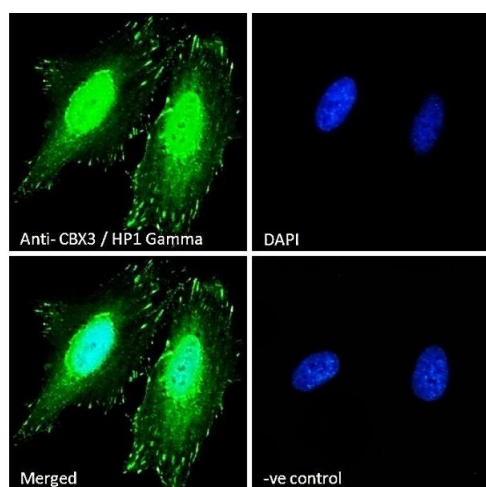
Handling

Precaution of Use:	This product contains Sodium azide: a POISONOUS AND HAZARDOUS SUBSTANCE which should be handled by trained staff only.
Handling Advice:	Minimize freezing and thawing.
Storage:	-20 °C
Storage Comment:	Aliquot and store at -20°C, with minimal freeze/thawing. A working aliquot may be refrigerated at 4°C for a few weeks and still remain viable.

Publications

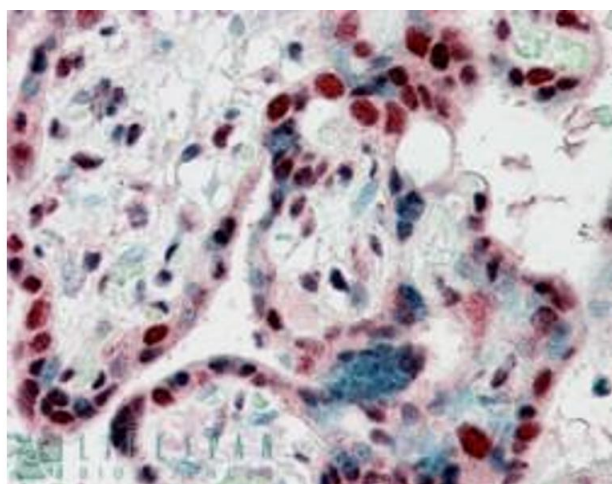
Product cited in:	Di Cello, Shin, Harbom, Brayton: "Knockdown of HMGA1 inhibits human breast cancer cell growth and metastasis in immunodeficient mice." in: Biochemical and biophysical research communications , Vol. 434, Issue 1, pp. 70-4, (2013) (PubMed).
-------------------	---

Images



Immunofluorescence

Image 1. (ABIN185493) Immunofluorescence analysis of paraformaldehyde fixed HeLa cells, permeabilized with 0.15 % Triton. Primary incubation 1hr (10 µg/mL) followed by Alexa Fluor 488 secondary antibody (2 µg/mL), showing strong nuclear and some cytoplasmic staining. The



Immunohistochemistry

Image 2. ABIN185493 (2.5µg/ml) staining of paraffin embedded Human Placenta. Steamed antigen retrieval with citrate buffer pH 6, AP-staining.



Western Blotting

Image 3. ABIN185493 (0.3µg/ml) staining of A431 lysate (35µg protein in RIPA buffer). Primary incubation was 1 hour. Detected by chemiluminescence.

Please check the [product details page](#) for more images. Overall 7 images are available for ABIN185493.