

Datasheet for ABIN1854934

## anti-Ceramide Synthase 2 antibody (Extracellular)



[Go to Product page](#)

### 1 Image

#### Overview

Quantity:	100 µL
Target:	Ceramide Synthase 2 (CERS2)
Binding Specificity:	Extracellular
Reactivity:	Human
Host:	Mouse
Clonality:	Monoclonal
Conjugate:	This Ceramide Synthase 2 antibody is un-conjugated
Application:	Western Blotting (WB), Immunohistochemistry (IHC), Immunofluorescence (fixed cells) (IF/ICC)

#### Product Details

Immunogen:	A synthetic peptide (conjugated with KLH) corresponding to the extracellular region of human LASS2.
Isotype:	IgG2b
Specificity:	LAG1 longevity assurance homolog 2 Antibody is a Mouse Monoclonal antibody against Human.
Purification:	Protein A or Protein G purified

#### Target Details

Target:	Ceramide Synthase 2 (CERS2)
Alternative Name:	LAG1 longevity assurance homolog 2, LASS2 ( <a href="#">CERS2 Products</a> )

Target Details

UniProt: Q96G23

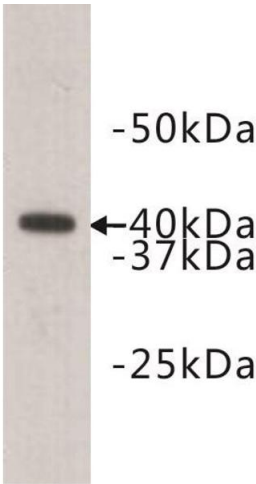
Application Details

Application Notes:	Optimal working dilution should be determined by the investigator.
Restrictions:	For Research Use only

Handling

Format:	Liquid
Buffer:	In TBS ( pH 7.4), 0.5 % BSA, 40 % Glycerol and 0.05 % Sodium Azide.
Preservative:	Sodium azide
Precaution of Use:	This product contains Sodium azide: a POISONOUS AND HAZARDOUS SUBSTANCE which should be handled by trained staff only.
Handling Advice:	Avoid exposure to light.
Storage:	-20 °C
Storage Comment:	Aliquot and store at -20 °C. Avoid repeated freeze/thaw cycles.
Expiry Date:	12 months

Images



Western Blotting

Image 1.