



[Go to Product page](#)

Datasheet for ABIN185496  
**anti-SLC9A3R2 antibody (Internal Region)**

2 Images

Overview

Quantity:	100 µg
Target:	SLC9A3R2
Binding Specificity:	Internal Region
Reactivity:	Human
Host:	Goat
Clonality:	Polyclonal
Conjugate:	This SLC9A3R2 antibody is un-conjugated
Application:	ELISA, Western Blotting (WB), Immunohistochemistry (IHC)

Product Details

Purpose:	NHERF2 (isoform a)
Immunogen:	Peptide with sequence C-DGSAWKQDPFQ, from the internal region of the protein sequence according to NP_001123484.1.
Sequence:	DGSAWKQDPF Q
Isotype:	IgG
Specificity:	Please note that this variant has an extra insertion of 11 residues compared to NP_004776.3. The immunizing peptide represents this insertion.
Cross-Reactivity:	Human
Purification:	Purified from goat serum by ammonium sulphate precipitation followed by antigen affinity chromatography using the immunizing peptide.

## Product Details

---

Grade: Verified

## Target Details

---

Target: SLC9A3R2

Alternative Name: SLC9A3R2 ([SLC9A3R2 Products](#))

Background: SLC9A3R2, solute carrier family 9 (sodium/hydrogen exchanger), isoform 3 regulator 2, HGNC:11076, E3KARP, NHE3RF2, NHERF-2, NHERF2, OCTS2, SIP-1, SIP1, TKA-1, sodium/hydrogen exchanger, solute carrier family 9 (sodium/hydrogen exchanger), isoform 3 regula

Gene ID: 9351

NCBI Accession: [NP\\_001123484](#)

## Application Details

---

Application Notes: Immunohistochemistry: In paraffin embedded Human Kidney shows strong membranous staining in glomerulus-. Recommended concentration, 1-2 µg/mL.  
Western Blot: Approx 38 kDa band observed in human kidney lysates (calculated MW of 37.4 kDa according to BAA33216.1). Recommended concentration: 0.3-1 µg/mL.  
Peptide ELISA: antibody detection limit dilution 1:32000.

Restrictions: For Research Use only

## Handling

---

Format: Liquid

Concentration: 0.5 mg/mL

Buffer: Supplied at 0.5 mg/mL in Tris saline, 0.02 % sodium azide, pH 7.3 with 0.5 % bovine serum albumin.

Preservative: Sodium azide

Precaution of Use: This product contains Sodium azide: a POISONOUS AND HAZARDOUS SUBSTANCE which should be handled by trained staff only.

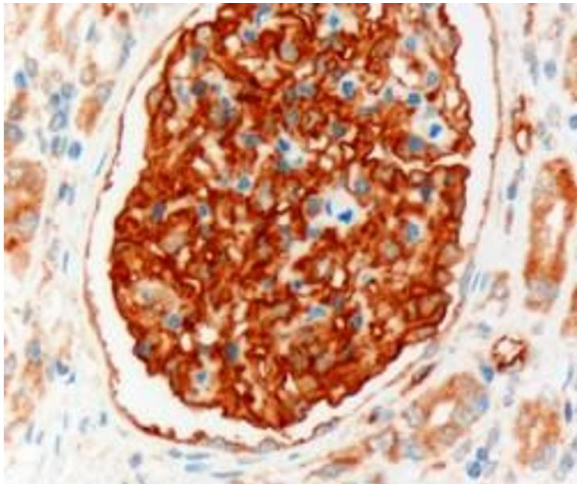
Handling Advice: Minimize freezing and thawing.

Storage: -20 °C

## Handling

Storage Comment: Aliquot and store at -20°C, with minimal freeze/thawing. A working aliquot may be refrigerated at 4°C for a few weeks and still remain viable.

## Images



### Immunohistochemistry

**Image 1.** ABIN185496 (3µg/ml) staining of paraffin embedded Human Kidney. Microwaved antigen retrieval with Tris/EDTA buffer pH9, HRP-staining.



### Western Blotting

**Image 2.** ABIN185496 (0.3µg/ml) staining of human kidney lysate (35µg protein in RIPA buffer). Primary incubation was 1 hour. Detected by chemiluminescence.