

Datasheet for ABIN185506

**anti-Monoamine Oxidase B antibody (Internal Region)**

8 Images

[Go to Product page](#)

## Overview

Quantity:	100 µg
Target:	Monoamine Oxidase B (MAOB)
Binding Specificity:	Internal Region
Reactivity:	Human, Mouse
Host:	Goat
Clonality:	Polyclonal
Conjugate:	This Monoamine Oxidase B antibody is un-conjugated
Application:	Western Blotting (WB), ELISA, Immunofluorescence (IF), Flow Cytometry (FACS)

## Product Details

Purpose:	MAOB
Immunogen:	Peptide with sequence C-HKARKLARLTKEE, from the internal region of the protein sequence according to NP_000889.3.
Sequence:	HKARKLARLT KEE
Isotype:	IgG
Specificity:	This antibody is not expected to cross-react with MAOA.
Cross-Reactivity:	Cow, Dog, Human, Mouse, Pig, Rat
Purification:	Purified from goat serum by ammonium sulphate precipitation followed by antigen affinity chromatography using the immunizing peptide.
Grade:	Verified

## Target Details

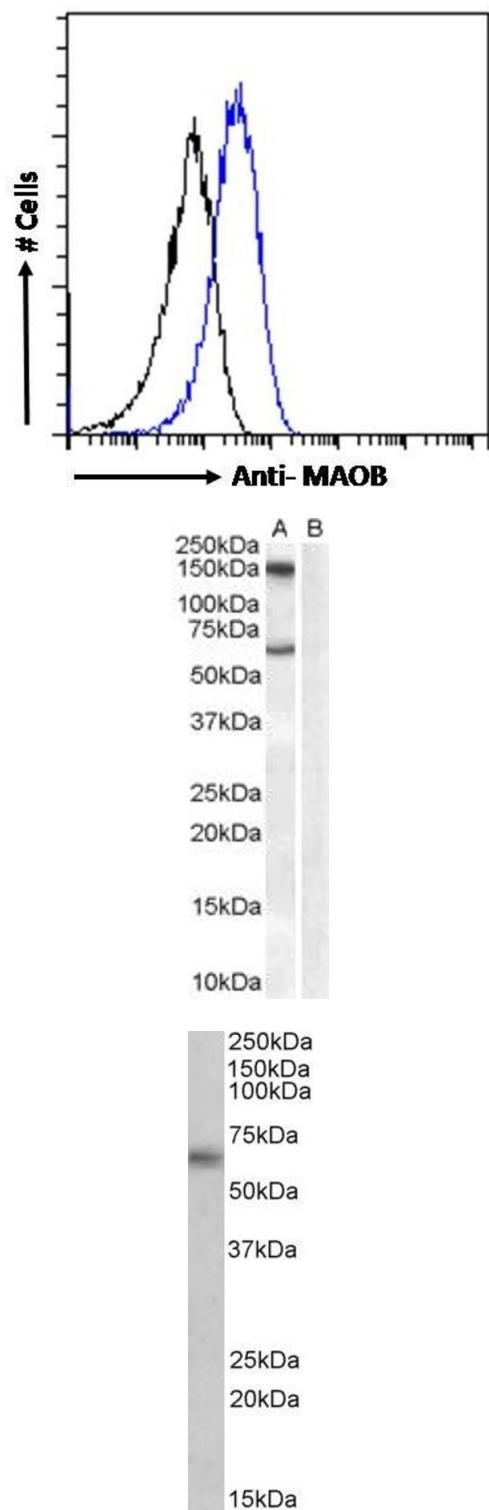
Target:	Monoamine Oxidase B (MAOB)
Alternative Name:	MAOB ( <a href="#">MAOB Products</a> )
Background:	MAOB, monoamine oxidase B , HGNC:6834, MGC26382, RP1-201D17__B.1, MAO, brain, MAO, platelet, adrenalin oxidase, amine oxidase (flavin-containing), tyramine oxidase
Gene ID:	4129, 109731
NCBI Accession:	<a href="#">NP_000889</a>

## Application Details

Application Notes:	Western Blot: Approx 60 kDa band observed in Human and Mouse Liver lysates and approx. 55-60 kDa in Human Testis and Breast cancer lysates (calculated MW of 58.8 kDa according to NP_000889.3). Recommended concentration: 0.1-0.3 µg/mL. Primary incubation 1 h Peptide ELISA: antibody detection limit dilution 1:32000.
Comment:	<b>Immunofluorescence:</b> Strong expression of the protein seen in the nuclei and cytoplasm of HeLa cells. Recommended concentration: 10µg/ml. <b>Flow Cytometry:</b> Flow cytometric analysis of HepG2 cells. Recommended concentration
Restrictions:	For Research Use only

## Handling

Format:	Liquid
Concentration:	0.5 mg/mL
Buffer:	Supplied at 0.5 mg/mL in Tris saline, 0.02 % sodium azide, pH 7.3 with 0.5 % bovine serum albumin.
Preservative:	Sodium azide
Precaution of Use:	This product contains Sodium azide: a POISONOUS AND HAZARDOUS SUBSTANCE which should be handled by trained staff only.
Handling Advice:	Minimize freezing and thawing.
Storage:	-20 °C
Storage Comment:	Aliquot and store at -20°C, with minimal freeze/thawing. A working aliquot may be refrigerated at 4°C for a few weeks and still remain viable.



### Flow Cytometry

**Image 1.** ABIN185506 Flow cytometric analysis of paraformaldehyde fixed HepG2 cells (blue line), permeabilized with 0.5 % Triton. Primary incubation 1hr (10 µg/mL) followed by Alexa Fluor 488 secondary antibody (1 µg/mL). IgG control: Unimmunized goat IgG (black line) fo

**Image 2.** ABIN185506 (1µg/ml) staining of Human Brain lysate (35µg protein in RIPA buffer) with (B) and without (A) blocking with the immunising peptide. Primary incubation was 1 hour. Detected by chemiluminescence.

### Western Blotting

**Image 3.** ABIN185506 (0.5µg/ml) staining of Human Brain (Hippocampus) lysate (35µg protein in RIPA buffer). Detected by chemiluminescence.

Please check the [product details page](#) for more images. Overall 8 images are available for ABIN185506.