

Datasheet for ABIN185512  
**anti-UCP1 antibody (C-Term)**

## 2 Images

[Go to Product page](#)

## Overview

Quantity:	100 µg
Target:	UCP1
Binding Specificity:	C-Term
Reactivity:	Rat
Host:	Goat
Clonality:	Polyclonal
Conjugate:	This UCP1 antibody is un-conjugated
Application:	Western Blotting (WB), ELISA

## Product Details

Purpose:	UCP1
Immunogen:	Peptide with sequence C-EQLKRELSKSRQ, from the C Terminus of the protein sequence according to NP_068605.1.
Sequence:	EQLKRELSKS RQ
Isotype:	IgG
Cross-Reactivity:	Dog, Human, Mouse, Rat
Purification:	Purified from goat serum by ammonium sulphate precipitation followed by antigen affinity chromatography using the immunizing peptide.
Grade:	Verified

## Target Details

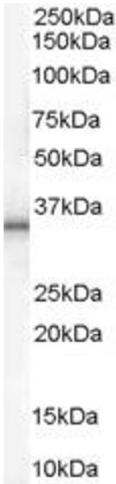
Target:	UCP1
Alternative Name:	UCP1 ( <a href="#">UCP1 Products</a> )
Background:	UCP1, uncoupling protein 1 (mitochondrial, proton carrier), HGNC:12517, SLC25A7, UCP, mitochondrial brown fat uncoupling protein, uncoupling protein 1
Gene ID:	7350
NCBI Accession:	<a href="#">NP_068605</a>
Pathways:	<a href="#">Proton Transport</a> , <a href="#">Brown Fat Cell Differentiation</a>

## Application Details

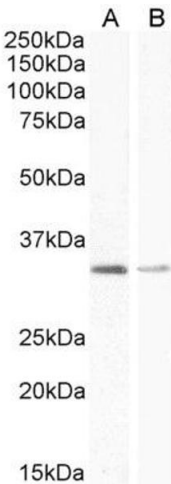
Application Notes:	Western Blot: Approx 35 kDa band observed in Rat Adipose tissue and Skeletal Muscle lysates (calculated MW of 33.2 kDa according to Rat NP_036814.1). Recommended concentration: 0.5-1 µg/mL. . Primary incubation 1 hour at room temperature. Peptide ELISA: antibody detection limit dilution 1:128000.
Restrictions:	For Research Use only

## Handling

Format:	Liquid
Concentration:	0.5 mg/mL
Buffer:	Supplied at 0.5 mg/mL in Tris saline, 0.02 % sodium azide, pH 7.3 with 0.5 % bovine serum albumin.
Preservative:	Sodium azide
Precaution of Use:	This product contains Sodium azide: a POISONOUS AND HAZARDOUS SUBSTANCE which should be handled by trained staff only.
Handling Advice:	Minimize freezing and thawing.
Storage:	-20 °C
Storage Comment:	Aliquot and store at -20°C, with minimal freeze/thawing. A working aliquot may be refrigerated at 4°C for a few weeks and still remain viable.



**Image 1.** ABIN185512 (1 ug/ml) staining of Human Adipose lysate (35 ug protein in RIPA buffer). Primary incubation was 1 hour. Detected by chemiluminescence.



**Western Blotting**

**Image 2.** ABIN185512 (1µg/ml) staining of Rat Adipose (A) and (0.5ug/ml) Skeletal Muscle (B) lysate (35µg protein in RIPA buffer) Detected by chemiluminescence.