

Datasheet for ABIN185513
anti-Klotho antibody (Internal Region)[Go to Product page](#)

1 Image

Overview

Quantity:	100 µg
Target:	Klotho (KL)
Binding Specificity:	Internal Region
Reactivity:	Human
Host:	Goat
Clonality:	Polyclonal
Conjugate:	This Klotho antibody is un-conjugated
Application:	Immunohistochemistry (IHC), ELISA

Product Details

Purpose:	Klotho
Immunogen:	Peptide with sequence C-KRDDAKYMYYLKK, from the internal region of the protein sequence according to NP_004786.2, NP_710150.1.
Sequence:	KRDDAKYMYY LKK
Isotype:	IgG
Specificity:	This antibody is expected to recognise both reported isoforms (NP_004786.2, NP_710150.1).
Predicted Reactivity:	Human, Mouse, Rat
Purification:	Purified from goat serum by ammonium sulphate precipitation followed by antigen affinity chromatography using the immunizing peptide.
Grade:	Verified

Target Details

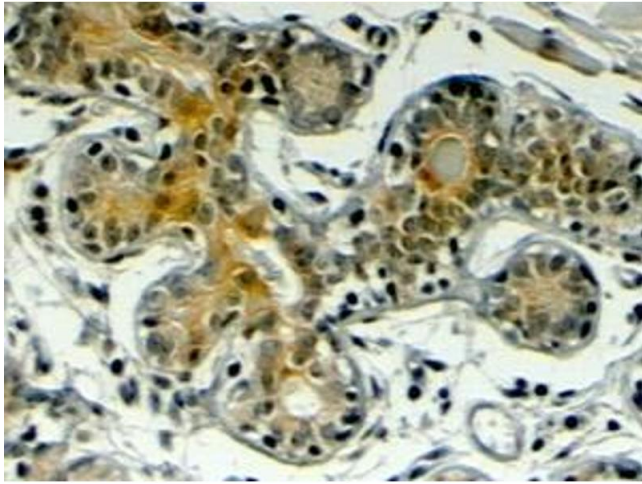
Target:	Klotho (KL)
Alternative Name:	Klotho (KL Products)
Background:	KL, klotho
Gene ID:	9365
NCBI Accession:	NP_004786 , NP_710150
Pathways:	Fc-epsilon Receptor Signaling Pathway , EGFR Signaling Pathway , Neurotrophin Signaling Pathway , Hormone Activity , Growth Factor Binding

Application Details

Application Notes:	<p>DS WB Results: Preliminary experiments in Human Brain, Duodenum, Placenta and Prostate lysates gave no specific signal but low background at antibody concentration up to 1 µg/mL.</p> <p>DS IHC Results: In paraffin embedded Human Breast shows cytoplasm staining in luminal epithelial cells of ducts, while Human Placenta shows membranous staining. Recommended concentration: 4-6 µg/mL.</p> <p>Peptide ELISA: antibody detection limit dilution 1:4000.</p>
Restrictions:	For Research Use only

Handling

Format:	Liquid
Concentration:	0.5 mg/mL
Buffer:	Supplied at 0.5 mg/mL in Tris saline, 0.02 % sodium azide, pH 7.3 with 0.5 % bovine serum albumin.
Preservative:	Sodium azide
Precaution of Use:	This product contains Sodium azide: a POISONOUS AND HAZARDOUS SUBSTANCE which should be handled by trained staff only.
Handling Advice:	Minimize freezing and thawing.
Storage:	-20 °C
Storage Comment:	Aliquot and store at -20°C, with minimal freeze/thawing. A working aliquot may be refrigerated at 4°C for a few weeks and still remain viable.



Immunohistochemistry

Image 1. ABIN185513 (4µg/ml) staining of paraffin embedded Human Breast. Steamed antigen retrieval with citrate buffer pH 6, HRP-staining.