

Datasheet for ABIN185516  
**anti-KPNB1 antibody (C-Term)**

5 Images



[Go to Product page](#)

## Overview

Quantity:	100 µg
Target:	KPNB1
Binding Specificity:	C-Term
Reactivity:	Human, Rat
Host:	Goat
Clonality:	Polyclonal
Conjugate:	This KPNB1 antibody is un-conjugated
Application:	Western Blotting (WB), ELISA, Immunohistochemistry (IHC), Flow Cytometry (FACS), Immunofluorescence (IF)

## Product Details

Purpose:	Karyopherin (importin) beta 1
Immunogen:	Peptide with sequence C-RRSKTNKAKTLAT, from the C Terminus of the protein sequence according to NP_002256.2.
Sequence:	RRSKTNKAKT LAT
Isotype:	IgG
Cross-Reactivity:	Cow, Dog, Human, Mouse, Rat
Purification:	Purified from goat serum by ammonium sulphate precipitation followed by antigen affinity chromatography using the immunizing peptide.
Grade:	Verified

## Target Details

---

Target:	KPNB1
Alternative Name:	KPNB1 ( <a href="#">KPNB1 Products</a> )
Background:	KPNB1, karyopherin (importin) beta 1, HGNC:6400, IMB1, IPOB, Impnb, MGC2155, MGC2156, MGC2157, NTF97, importin 90, importin beta-1 subunit, karyopherin beta 1, nuclear factor p97, KapB1, IPO1
Gene ID:	3837, 16211, 24917
NCBI Accession:	<a href="#">NP_002256</a>
Pathways:	<a href="#">Protein targeting to Nucleus</a>

## Application Details

---

Application Notes:	Immunohistochemistry: Paraffin embedded Human Spleen. Recommended concentration: 5 µg/mL. Western Blot: Approx 90-95- kDa band observed in lysates of cell lines A431, Daudi, HEK293, HeLa, Jurkat, Kelly and KNRK (calculated MW of 97.2 kDa according to Human NP_002256.2 and Rat NP_058759.2). Recommended concentration: 0.01-0.1 µg/mL. Primary incu Peptide ELISA: antibody detection limit dilution 1:32000.
Comment:	<b>Immunofluorescence:</b> Strong expression of the protein seen in U2OS cells. Recommended concentration: 10µg/ml. <b>Flow Cytometry:</b> Flow cytometric analysis of A431 cells. Recommended concentration: 10ug/ml.
Restrictions:	For Research Use only

## Handling

---

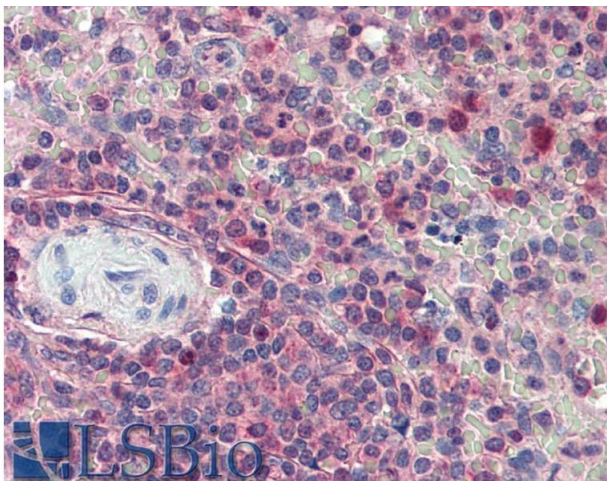
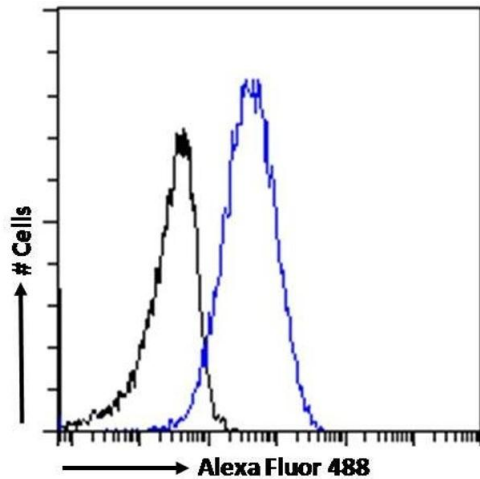
Format:	Liquid
Concentration:	0.5 mg/mL
Buffer:	Supplied at 0.5 mg/mL in Tris saline, 0.02 % sodium azide, pH 7.3 with 0.5 % bovine serum albumin.
Preservative:	Sodium azide
Precaution of Use:	This product contains Sodium azide: a POISONOUS AND HAZARDOUS SUBSTANCE which should be handled by trained staff only.
Handling Advice:	Minimize freezing and thawing.

## Handling

Storage: -20 °C

Storage Comment: Aliquot and store at -20°C, with minimal freeze/thawing. A working aliquot may be refrigerated at 4°C for a few weeks and still remain viable.

## Images



### Flow Cytometry

**Image 1.** (ABIN185516) Flow cytometric analysis of paraformaldehyde fixed A431 cells (blue line), permeabilized with 0.5 % Triton. Primary incubation 1hr (10 µg/mL) followed by Alexa Fluor 488 secondary antibody (1 µg/mL). IgG control: Unimmunized goat IgG (black line) fol

### Western Blotting

**Image 2.** ABIN185516 (0.03µg/ml) staining of Daudi cell lysate (35µg protein in RIPA buffer). Detected by chemiluminescence.

### Immunohistochemistry

**Image 3.** ABIN185516 (5µg/ml) staining of paraffin embedded Human Spleen. Steamed antigen retrieval with citrate buffer pH 6, AP-staining.

Please check the [product details page](#) for more images. Overall 5 images are available for ABIN185516.

Order at [www.antibodies-online.com](http://www.antibodies-online.com) | [www.antikoerper-online.de](http://www.antikoerper-online.de) | [www.anticorps-enligne.fr](http://www.anticorps-enligne.fr) | [www.antibodies-online.cn](http://www.antibodies-online.cn)

International: +49 (0)241 95 163 153 | USA & Canada: +1 877 302 8632 | [support@antibodies-online.com](mailto:support@antibodies-online.com)

Page 3/3 | Product datasheet for ABIN185516 | 07/26/2024 | Copyright antibodies-online. All rights reserved.