

Datasheet for ABIN185519
anti-RPS19 antibody (Internal Region)

5 Images

[Go to Product page](#)

Overview

Quantity:	100 µg
Target:	RPS19
Binding Specificity:	Internal Region
Reactivity:	Human
Host:	Goat
Clonality:	Polyclonal
Conjugate:	This RPS19 antibody is un-conjugated
Application:	Western Blotting (WB), ELISA, Immunohistochemistry (IHC)

Product Details

Purpose:	RPS19
Immunogen:	Peptide with sequence C-KMVEKDQDGGRK, from the internal region of the protein sequence according to NP_001013.1.
Sequence:	KMVEKDQDGG RK
Isotype:	IgG
Cross-Reactivity:	Cow, Dog, Human, Mouse, Rat
Purification:	Purified from goat serum by ammonium sulphate precipitation followed by antigen affinity chromatography using the immunizing peptide.
Grade:	Verified

Target Details

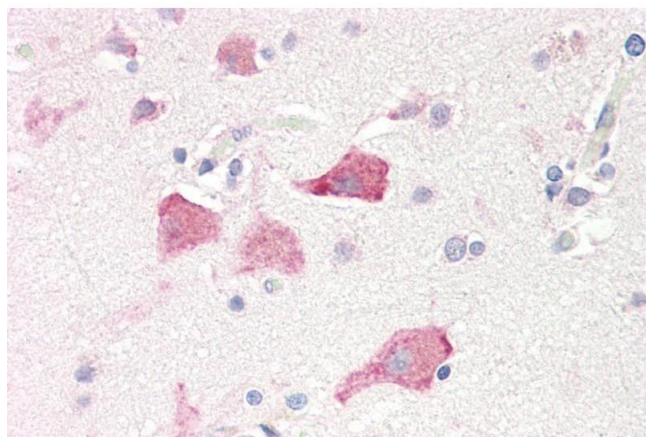
Target:	RPS19
Alternative Name:	RPS19 (RPS19 Products)
Background:	RPS19, ribosomal protein S19, HGNC:10402, DBA, 40S ribosomal protein S19
Gene ID:	6223
NCBI Accession:	NP_001013
Pathways:	Positive Regulation of Immune Effector Process , Ribonucleoprotein Complex Subunit Organization , Ribosome Assembly

Application Details

Application Notes:	Immunohistochemistry: Paraffin embedded Human Brain (Cortex), Liver and Tonsil. Recommended concentration: 5 µg/mL. Western Blot: Approx 16 kDa band observed in lysate of cell line K562 (calculated MW of 16.1 kDa according to NP_001013.1). Recommended concentration: 0.3-1 µg/mL. Primary incubation was 1 hour. Peptide ELISA: antibody detection limit dilution 1:16000.
Restrictions:	For Research Use only

Handling

Format:	Liquid
Concentration:	0.5 mg/mL
Buffer:	Supplied at 0.5 mg/mL in Tris saline, 0.02 % sodium azide, pH 7.3 with 0.5 % bovine serum albumin.
Preservative:	Sodium azide
Precaution of Use:	This product contains Sodium azide: a POISONOUS AND HAZARDOUS SUBSTANCE which should be handled by trained staff only.
Handling Advice:	Minimize freezing and thawing.
Storage:	-20 °C
Storage Comment:	Aliquot and store at -20°C, with minimal freeze/thawing. A working aliquot may be refrigerated at 4°C for a few weeks and still remain viable.



Immunohistochemistry

Image 1. ABIN185519 (5µg/ml) staining of paraffin embedded Human Cortex. Steamed antigen retrieval with citrate buffer pH 6, AP-staining.



Western Blotting

Image 2. ABIN185519 (0.3µg/ml) staining of lysate of cell line K562 (35µg protein in RIPA buffer). Detected by chemiluminescence.



Image 3. ABIN185519 (0.03µg/ml) staining of K562 lysate (35µg protein in RIPA buffer). Primary incubation was 1 hour. Detected by chemiluminescence.

Please check the [product details page](#) for more images. Overall 5 images are available for ABIN185519.