

Datasheet for ABIN185522  
**anti-FZD8 antibody (C-Term)**[Go to Product page](#)

## 2 Images

## Overview

Quantity:	100 µg
Target:	FZD8
Binding Specificity:	C-Term
Reactivity:	Human
Host:	Goat
Clonality:	Polyclonal
Conjugate:	This FZD8 antibody is un-conjugated
Application:	ELISA, Western Blotting (WB), Immunohistochemistry (IHC), Immunofluorescence (IF), Immunoelectron Microscopy (IEM)

## Product Details

Purpose:	FZD8 / frizzled 8
Immunogen:	Peptide with sequence C-SYPKQMPLSQV, from the C Terminus of the protein sequence according to NP_114072.1.
Sequence:	SYPKQMPLSQ V
Isotype:	IgG
Cross-Reactivity:	Cow, Dog, Human, Mouse, Rat
Purification:	Purified from goat serum by ammonium sulphate precipitation followed by antigen affinity chromatography using the immunizing peptide.
Grade:	Verified

## Target Details

Target:	FZD8
Alternative Name:	FZD8 ( <a href="#">FZD8 Products</a> )
Background:	FZD8, frizzled homolog 8 (Drosophila) , HGNC:4046, FZ-8, hFZ8 , frizzled (Drosophila) homolog 8, frizzled 8
Gene ID:	8325, 14370
NCBI Accession:	<a href="#">NP_114072</a>
Pathways:	<a href="#">WNT Signaling</a>

## Application Details

Application Notes:	<p>Immunohistochemistry: Paraffin embedded Human Pancreas. Recommended concentration: 3 µg/mL.</p> <p>Western Blot: Approx 75 kDa band observed in Human Pancreas lysates (calculated MW of 73.3 kDa according to NP_114072.1). Recommended concentration: 1-3 µg/mL. Primary incubation was 1 hour. This antibody has been successfully used in WB on Mouse: Zhao B e</p> <p>Peptide ELISA: antibody detection limit dilution 1:32000.</p>
Comment:	<p><b>Immunofluorescence:</b> This antibody has been successfully used in IF on Mouse: Zhao B et al. (2019) PMID: 21321602.</p> <p><b>Additional validation:</b> This antibody was successfully used in Electron microscopy (immunogold staining):</p>
Restrictions:	For Research Use only

## Handling

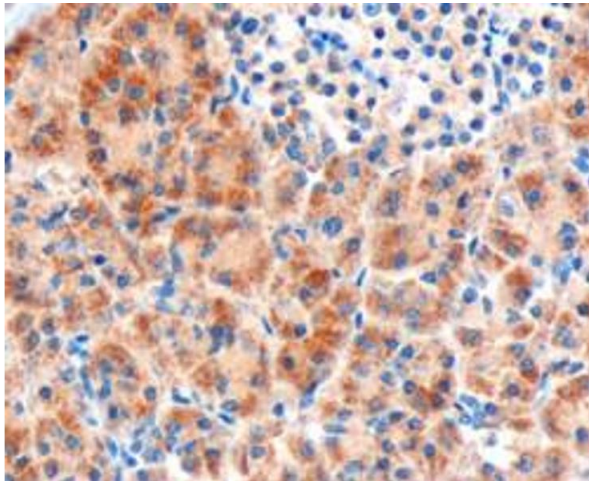
Format:	Liquid
Concentration:	0.5 mg/mL
Buffer:	Supplied at 0.5 mg/mL in Tris saline, 0.02 % sodium azide, pH 7.3 with 0.5 % bovine serum albumin.
Preservative:	Sodium azide
Precaution of Use:	This product contains Sodium azide: a POISONOUS AND HAZARDOUS SUBSTANCE which should be handled by trained staff only.
Handling Advice:	Minimize freezing and thawing.

## Handling

Storage: -20 °C

Storage Comment: Aliquot and store at -20°C, with minimal freeze/thawing. A working aliquot may be refrigerated at 4°C for a few weeks and still remain viable.

## Images



### Immunohistochemistry

**Image 1.** ABIN185522 (3µg/ml) staining of paraffin embedded Human Pancreas. Microwaved antigen retrieval with Tris/EDTA buffer pH9, HRP-



### Western Blotting

**Image 2.** ABIN185522 (1µg/ml) staining of Human Pancreas lysate (35µg protein in RIPA buffer). Detected by chemiluminescence.