



[Go to Product page](#)

Datasheet for ABIN185530  
**anti-PDE4D antibody (C-Term)**

4 Images

1 Publication

### Overview

Quantity:	100 µg
Target:	PDE4D
Binding Specificity:	C-Term
Reactivity:	Human
Host:	Goat
Clonality:	Polyclonal
Conjugate:	This PDE4D antibody is un-conjugated
Application:	Western Blotting (WB), ELISA, Immunohistochemistry (IHC), Enzyme Immunoassay (EIA)

### Product Details

Purpose:	PDE4D
Immunogen:	Peptide with sequence QPEACVIDDRSPDT, from the C Terminus of the protein sequence according to NP_001184151.1, NP_001184150.1, NP_006194.2, NP_001098101.1, NP_001184152.1, NP_001159371.1.
Sequence:	QPEACVIDDR SPDT
Isotype:	IgG
Specificity:	This antibody is expected to recognize all reported isoforms.
Cross-Reactivity:	Human
Purification:	Purified from goat serum by ammonium sulphate precipitation followed by antigen affinity chromatography using the immunizing peptide.

## Product Details

---

Grade: Verified

## Target Details

---

Target: PDE4D

Alternative Name: PDE4D ([PDE4D Products](#))

Background: PDE4D, phosphodiesterase 4D, cAMP-specific (phosphodiesterase E3 dunce homolog, Drosophila), HGNC:8783, DPDE3, HSPDE4D, PDE4DN2, STRK1, cAMP-specific phosphodiesterase 4D, cAMP-specific phosphodiesterase PDE4D6, dunce-like phosphodiesterase E3, phosphodie

Gene ID: 5144

NCBI Accession: [NP\\_001184151](#), [NP\\_001184150](#), [NP\\_006194](#), [NP\\_001098101](#), [NP\\_001184152](#), [NP\\_001159371](#)

Pathways: [Cellular Response to Molecule of Bacterial Origin](#), [cAMP Metabolic Process](#), [Myometrial Relaxation and Contraction](#), [Regulation of G-Protein Coupled Receptor Protein Signaling](#)

## Application Details

---

Application Notes: Immunohistochemistry: Paraffin embedded Human Skeletal Muscle and Heart. Recommended concentration: 5 µg/mL.  
Western Blot: Approx 70+80+90 kDa bands observed in lysates of cell line A549. In transfected COS1 transiently expressing PDE4D1 and PDE4D3 bands of approx. 68 kDa and 95 kDa are observed. These bands are not observed in the untransfected COS1. Calculated Peptide ELISA: antibody detection limit dilution 1:128000.

Comment: **ELISA:** This antibody has been successfully used in ELISA as described in the following paper: Bazhin et al, Mol Immunol. 2010 Jan,47(4):678-84., PMID: 19939455.

Restrictions: For Research Use only

## Handling

---

Format: Liquid

Concentration: 0.5 mg/mL

Buffer: Supplied at 0.5 mg/mL in Tris saline, 0.02 % sodium azide, pH 7.3 with 0.5 % bovine serum albumin.

Preservative: Sodium azide

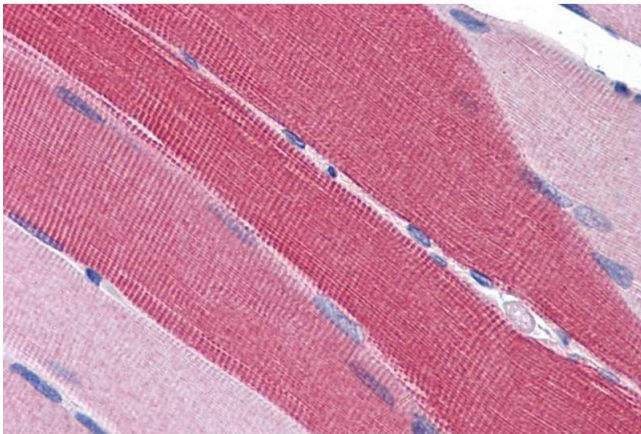
## Handling

Precaution of Use:	This product contains Sodium azide: a POISONOUS AND HAZARDOUS SUBSTANCE which should be handled by trained staff only.
Handling Advice:	Minimize freezing and thawing.
Storage:	-20 °C
Storage Comment:	Aliquot and store at -20°C, with minimal freeze/thawing. A working aliquot may be refrigerated at 4°C for a few weeks and still remain viable.

## Publications

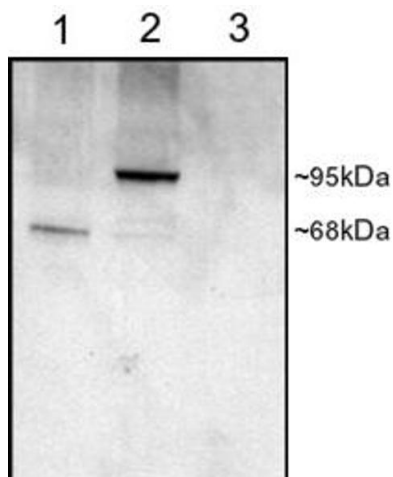
Product cited in:	Bazhin, Kahnert, Kimpfler, Schadendorf, Umansky: "Distinct metabolism of cyclic adenosine monophosphate in regulatory and helper CD4+ T cells." in: <b>Molecular immunology</b> , Vol. 47, Issue 4, pp. 678-84, (2010) ( <a href="#">PubMed</a> ).
-------------------	--

## Images



### Immunohistochemistry

**Image 1.** ABIN185530 (5µg/ml) staining of paraffin embedded Human Skeletal Muscle. Steamed antigen retrieval with citrate buffer pH 6, AP-staining.



**Image 2.** ABIN185530 staining (1µg/ml) of COS cell lysates (25µg protein): transfected with Human PDE4D1 (1), transfected with Human PDE4D3 (2), untransfected (3). Primary incubation was 1 hour. Detected by chemiluminescence.



**Image 3.** ABIN185530 staining (0.3µg/ml) of A549 lysate (35µg protein in RIPA buffer). Primary incubation was 1 hour. Detected by chemiluminescence.

Please check the [product details page](#) for more images. Overall 4 images are available for ABIN185530.