

Datasheet for ABIN185537
anti-ROBO1 antibody (Internal Region)

10 Images

[Go to Product page](#)

Overview

Quantity:	100 µg
Target:	ROBO1
Binding Specificity:	Internal Region
Reactivity:	Human
Host:	Goat
Clonality:	Polyclonal
Conjugate:	This ROBO1 antibody is un-conjugated
Application:	ELISA, Immunohistochemistry (IHC), Immunofluorescence (IF)

Product Details

Purpose:	ROBO1 / DUTT1 (Internal)
Immunogen:	Peptide with sequence C-GDVDSLNSKINEMK, from the internal region of the protein sequence according to NP_002932.1, NP_598334.1, NP_001139316.1, NP_001139317.1.
Sequence:	GDVDLSNKIN EMK
Isotype:	IgG
Specificity:	Not expected to cross-react with ROBO2 or ROBO3.
Cross-Reactivity:	Cow, Dog, Human, Mouse, Rat
Purification:	Purified from goat serum by ammonium sulphate precipitation followed by antigen affinity chromatography using the immunizing peptide.
Grade:	Verified

Target Details

Target:	ROB01
Alternative Name:	ROB01 (ROB01 Products)
Background:	ROB01, DUTT1, roundabout, axon guidance receptor, homolog 1 (Drosophila) , HGNC:10249, FLJ21882, SAX3, axon guidance receptor, roundabout 1, MGC131599, MGC133277
Gene ID:	6091, 19876, 58946
NCBI Accession:	NP_002932 , NP_598334
Pathways:	Positive Regulation of Endopeptidase Activity

Application Details

Application Notes:	Immunohistochemistry: Paraffin embedded Human Brain (Cortex) and Kidney. Recommended concentration: 5-6 µg/mL. Peptide ELISA: antibody detection limit dilution 1:16000.
Comment:	Immunofluorescence: Strong expression of the protein seen in the Plasma membrane and Golgi/ER of HeLa and U2OS cells. Recommended concentration: 10µg/ml.
Restrictions:	For Research Use only

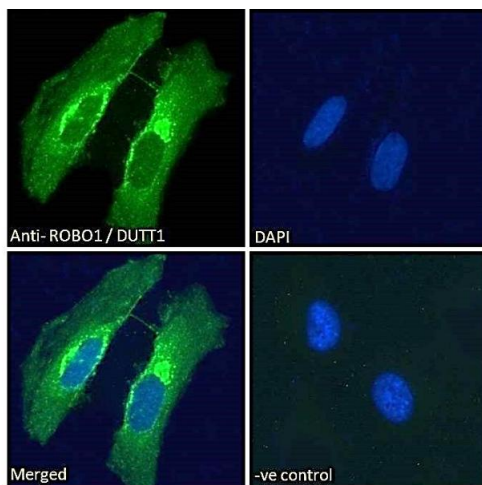
Handling

Format:	Liquid
Concentration:	0.5 mg/mL
Buffer:	Supplied at 0.5 mg/mL in Tris saline, 0.02 % sodium azide, pH 7.3 with 0.5 % bovine serum albumin.
Preservative:	Sodium azide
Precaution of Use:	This product contains Sodium azide: a POISONOUS AND HAZARDOUS SUBSTANCE which should be handled by trained staff only.
Handling Advice:	Minimize freezing and thawing.
Storage:	-20 °C
Storage Comment:	Aliquot and store at -20°C, with minimal freeze/thawing. A working aliquot may be refrigerated at 4°C for a few weeks and still remain viable.



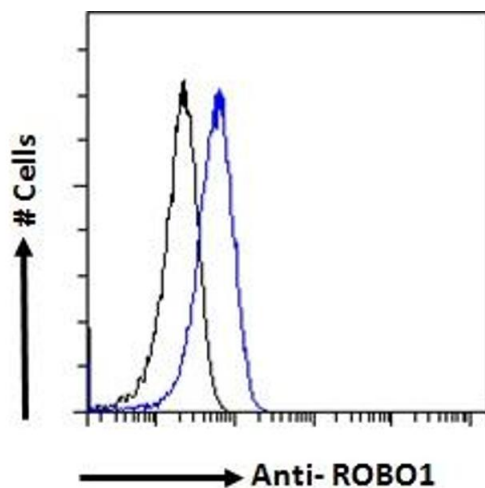
Immunohistochemistry

Image 1. (ABIN185537) (5 µg/mL) staining of paraffin embedded Human Cortex. Heat induced antigen retrieval with citrate buffer pH 6, HRP-staining.



Immunofluorescence

Image 2. ABIN185537 Immunofluorescence analysis of paraformaldehyde fixed HeLa cells, permeabilized with 0.15% Triton. Primary incubation 1hr (10ug/ml) followed by Alexa Fluor 488 secondary antibody (2ug/ml), showing Golgi and membrane staining. The nuclear stain is DAPI (blue). Negative control: Unimmunized goat IgG (10ug/ml) followed by Alexa Fluor 488 secondary antibody (2ug/ml).



Flow Cytometry

Image 3. ABIN185537 Flow cytometric analysis of paraformaldehyde fixed HeLa cells (blue line), permeabilized with 0.5% Triton. Primary incubation overnight (10ug/ml) followed by Alexa Fluor 488 secondary antibody (1ug/ml). IgG control: Unimmunized goat IgG (black line) followed by Alexa Fluor 488 secondary antibody.

Please check the [product details page](#) for more images. Overall 10 images are available for ABIN185537.