

Datasheet for ABIN185540
anti-ITPR2 antibody (Internal Region)



[Go to Product page](#)

3 Images

Overview

Quantity:	100 µg
Target:	ITPR2
Binding Specificity:	Internal Region
Reactivity:	Human
Host:	Goat
Clonality:	Polyclonal
Conjugate:	This ITPR2 antibody is un-conjugated
Application:	ELISA, Immunohistochemistry (IHC)

Product Details

Purpose:	ITPR2
Immunogen:	Peptide with sequence C-PIEESNILSPVQD, from the internal region of the protein sequence according to NP_002214.2.
Sequence:	PIEESNILSP VQD
Isotype:	IgG
Specificity:	No cross-reactivity expected with other types of ITPR.
Cross-Reactivity:	Cow, Dog, Human, Mouse, Rat
Purification:	Purified from goat serum by ammonium sulphate precipitation followed by antigen affinity chromatography using the immunizing peptide.
Grade:	Verified

Target Details

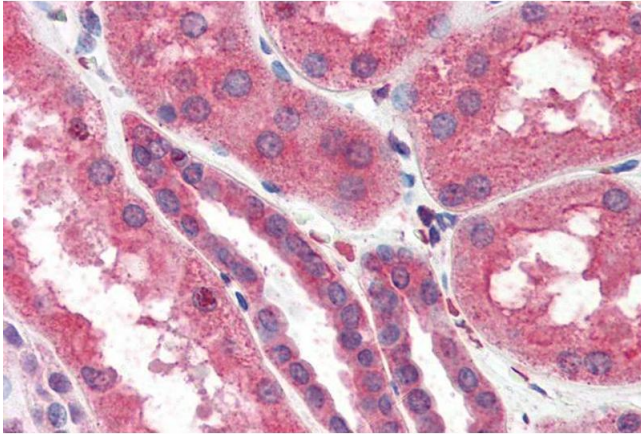
Target:	ITPR2
Alternative Name:	ITPR2 (ITPR2 Products)
Background:	ITPR2, inositol 1,4,5-triphosphate receptor, type 2 , HGNC:6181, IP3R2
Gene ID:	3709, 16439, 81678
NCBI Accession:	NP_002214
Pathways:	Fc-epsilon Receptor Signaling Pathway , EGFR Signaling Pathway , Neurotrophin Signaling Pathway , Thyroid Hormone Synthesis , Myometrial Relaxation and Contraction , G-protein mediated Events , Interaction of EGFR with phospholipase C-gamma

Application Details

Application Notes:	<p>Immunohistochemistry: Paraffin embedded Human Kidney, Skin and Heart. Recommended concentration: 3.75 µg/mL.</p> <p>Western Blot: Preliminary experiments gave an approx 28-30 kDa band in Human Heart lysates after 0.1 µg/mL antibody staining. Please note that currently we cannot find an explanation in the literature for the band we observe given the calculated size of 30</p> <p>Peptide ELISA: antibody detection limit dilution 1:128000.</p>
Restrictions:	For Research Use only

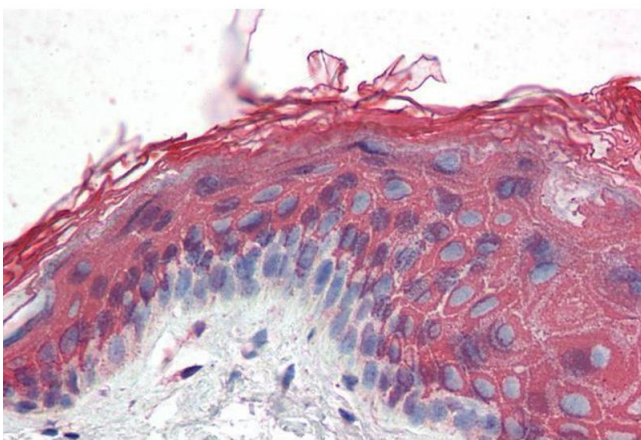
Handling

Format:	Liquid
Concentration:	0.5 mg/mL
Buffer:	Supplied at 0.5 mg/mL in Tris saline, 0.02 % sodium azide, pH 7.3 with 0.5 % bovine serum albumin.
Preservative:	Sodium azide
Precaution of Use:	This product contains Sodium azide: a POISONOUS AND HAZARDOUS SUBSTANCE which should be handled by trained staff only.
Handling Advice:	Minimize freezing and thawing.
Storage:	-20 °C
Storage Comment:	Aliquot and store at -20°C, with minimal freeze/thawing. A working aliquot may be refrigerated at 4°C for a few weeks and still remain viable.



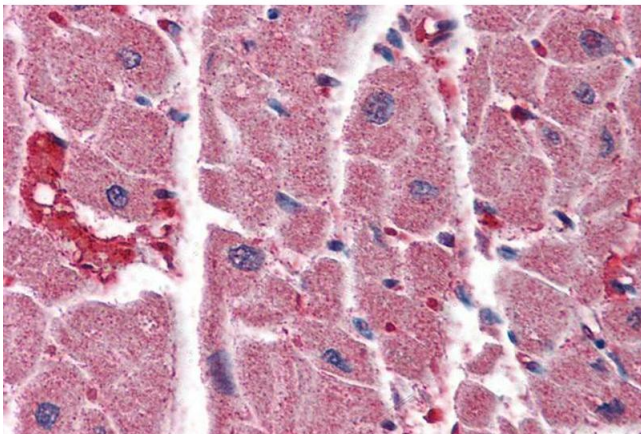
Immunohistochemistry

Image 1. ABIN185540 (3.75µg/ml) staining of paraffin embedded Human Kidney. Steamed antigen retrieval with citrate buffer pH 6, AP-staining.



Immunohistochemistry

Image 2. ABIN185540 (3.75µg/ml) staining of paraffin embedded Human Skin. Steamed antigen retrieval with citrate buffer pH 6, AP-staining.



Immunohistochemistry

Image 3. ABIN185540 (3.75µg/ml) staining of paraffin embedded Human Heart. Steamed antigen retrieval with citrate buffer pH 6, AP-staining.