

Datasheet for ABIN185544  
**anti-VPS25 antibody (Internal Region)**

## 5 Images

[Go to Product page](#)

## Overview

Quantity:	100 µg
Target:	VPS25
Binding Specificity:	Internal Region
Reactivity:	Human, Rat
Host:	Goat
Clonality:	Polyclonal
Conjugate:	This VPS25 antibody is un-conjugated
Application:	Western Blotting (WB), ELISA, Immunohistochemistry (IHC)

## Product Details

Purpose:	VPS25
Immunogen:	Peptide with sequence C-QPNVDTRQKQ, from the internal region of the protein sequence according to NP_115729.1.
Sequence:	QPNVDTRQKQ
Isotype:	IgG
Cross-Reactivity:	Dog, Human, Mouse, Rat
Purification:	Purified from goat serum by ammonium sulphate precipitation followed by antigen affinity chromatography using the immunizing peptide.
Grade:	Verified

## Target Details

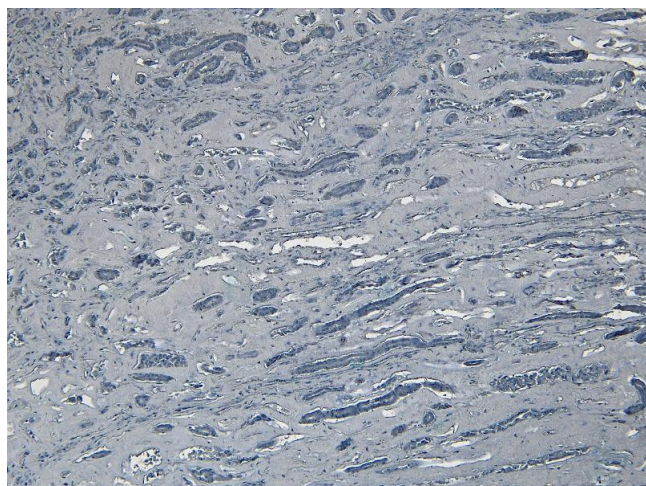
Target:	VPS25
Alternative Name:	VPS25 ( <a href="#">VPS25 Products</a> )
Background:	VPS25, vacuolar protein sorting 25 (yeast), HGNC:28122, DERP9, EAP20, MGC10540, vacuolar protein sorting 25, vacuolar protein sorting 25 homolog (S. cerevisiae), FAP20
Gene ID:	84313
NCBI Accession:	<a href="#">NP_115729</a>

## Application Details

Application Notes:	<p>Immunohistochemistry: Paraffin embedded Human Kidney. Recommended concentration: 6-8 µg/mL.</p> <p>Western Blot: Approx. 22 kDa band observed in Rat Kidney lysates (calculated MW of 20.7 kDa according to human NP_115729.1). Recommended concentration: 0.3-1 µg/mL. Primary incubation was 1 hour.</p> <p>Peptide ELISA: antibody detection limit dilution 1:32000.</p>
Restrictions:	For Research Use only

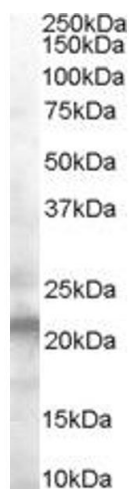
## Handling

Format:	Liquid
Concentration:	0.5 mg/mL
Buffer:	Supplied at 0.5 mg/mL in Tris saline, 0.02 % sodium azide, pH 7.3 with 0.5 % bovine serum albumin.
Preservative:	Sodium azide
Precaution of Use:	This product contains Sodium azide: a POISONOUS AND HAZARDOUS SUBSTANCE which should be handled by trained staff only.
Handling Advice:	Minimize freezing and thawing.
Storage:	-20 °C
Storage Comment:	Aliquot and store at -20°C, with minimal freeze/thawing. A working aliquot may be refrigerated at 4°C for a few weeks and still remain viable.

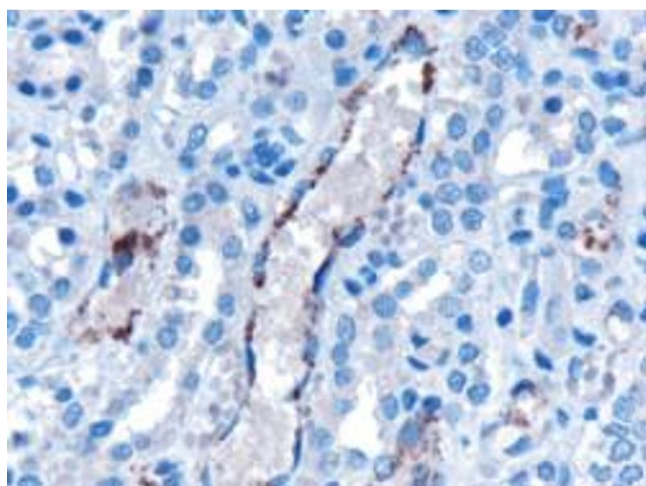


#### Immunohistochemistry

**Image 1.** (ABIN185544) Negative Control showing staining of paraffin embedded Human Kidney, with no primary antibody.



**Image 2.** ABIN185544 (0.5 ug/ml) staining of human liver lysate (35 ug protein in RIPA buffer). Primary incubation was 1 hour. Detected by chemiluminescence.



#### Immunohistochemistry

**Image 3.** ABIN185544 (10µg/ml) staining of paraffin embedded human kidney. Microwaved antigen retrieval with Tris/EDTA buffer pH9, HRP-staining. This data is from a previous batch, not on sale.

Please check the [product details page](#) for more images. Overall 5 images are available for ABIN185544.