



[Go to Product page](#)

Datasheet for ABIN185555
anti-IFT88 antibody (C-Term)

6 Images

2 Publications

Overview

Quantity:	100 µg
Target:	IFT88
Binding Specificity:	C-Term
Reactivity:	Human, Mouse
Host:	Goat
Clonality:	Polyclonal
Conjugate:	This IFT88 antibody is un-conjugated
Application:	Western Blotting (WB), Immunofluorescence (IF), ELISA, Flow Cytometry (FACS)

Product Details

Purpose:	IFT88 / Polaris
Immunogen:	Peptide with sequence C-KKRIDEDDFAEDEE, from the C Terminus of the protein sequence according to NP_783195.2, NP_006522.2.
Sequence:	KKRIDEDDFA DEE
Isotype:	IgG
Specificity:	This antibody is expected to recognise many reported isoforms.
Cross-Reactivity:	Dog, Human, Mouse, Rat
Purification:	Purified from goat serum by ammonium sulphate precipitation followed by antigen affinity chromatography using the immunizing peptide.
Grade:	Verified

Target Details

Target:	IFT88
Alternative Name:	IFT88 (IFT88 Products)
Background:	IFT88, polaris, TTC10, tetratricopeptide repeat domain 10, HGNC:20606, D13S1056E, DAF19, IFT88, MGC26259, RP11-172H24.2, TG737, hTg737, TPR repeat protein 10, Probe hTg737 (polycystic kidney disease, autosomal recessive), Tg737 protein, intraflagellar tra
Gene ID:	8100, 21821, 305918
NCBI Accession:	NP_783195 , NP_006522 , NP_001340507 , NP_001340498
Pathways:	Hedgehog Signaling , Sensory Perception of Sound

Application Details

Application Notes:	Western Blot: Approx 90 kDa band observed in lysates of cell line A549 and in Mouse Testis lysates, and in preliminary testing of Rat Testes lysate (calculated MW of 90.4 kDa according to Hunab NP_001340498.1, and 93.1 kDa according to Mouse NP_033402.2 93. Peptide ELISA: antibody detection limit dilution 1:128000.
Comment:	Immunofluorescence: Strong expression of the protein seen in the nucleus and less staining in the cytoplasm of HepG2 cells. Recommended concentration: 10µg/ml. Flow Cytometry: Flow cytometric analysis of HepG2 cells.
Restrictions:	For Research Use only

Handling

Format:	Liquid
Concentration:	0.5 mg/mL
Buffer:	Supplied at 0.5 mg/mL in Tris saline, 0.02 % sodium azide, pH 7.3 with 0.5 % bovine serum albumin.
Preservative:	Sodium azide
Precaution of Use:	This product contains Sodium azide: a POISONOUS AND HAZARDOUS SUBSTANCE which should be handled by trained staff only.
Handling Advice:	Minimize freezing and thawing.
Storage:	-20 °C
Storage Comment:	Aliquot and store at -20°C, with minimal freeze/thawing. A working aliquot may be refrigerated

at 4°C for a few weeks and still remain viable.

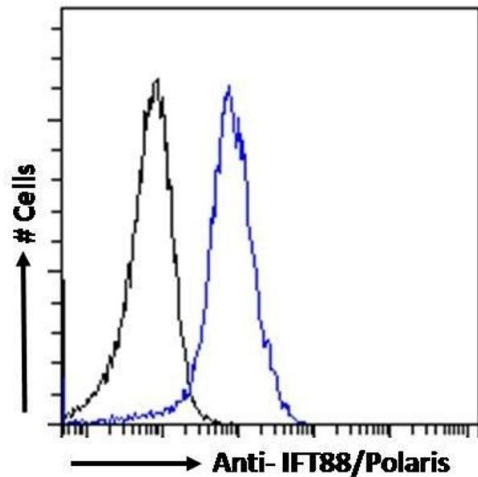
Publications

Product cited in:

Miyoshi, Kasahara, Miyazaki, Shimizu, Taniguchi, Matsuzaki, Tohyama, Asanuma: "Pericentrin, a centrosomal protein related to microcephalic primordial dwarfism, is required for olfactory cilia assembly in mice." in: **FASEB journal : official publication of the Federation of American Societies for Experimental Biology**, Vol. 23, Issue 10, pp. 3289-97, (2009) ([PubMed](#)).

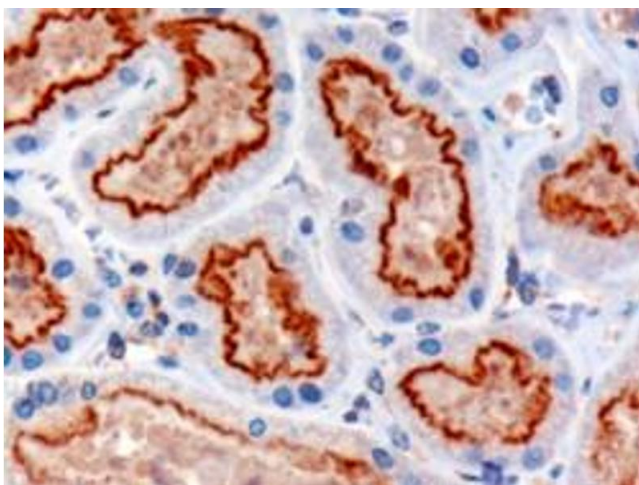
Jiang, Chiou, Wang, Chien, Ho, Tsai, Lin, Tsai, Li: "Essential role of nephrocystin in photoreceptor intraflagellar transport in mouse." in: **Human molecular genetics**, Vol. 18, Issue 9, pp. 1566-77, (2009) ([PubMed](#)).

Images



Flow Cytometry

Image 1. ABIN185555 Flow cytometric analysis of paraformaldehyde fixed HepG2 cells (blue line), permeabilized with 0.5 % Triton. Primary incubation 1hr (10 µg/mL) followed by Alexa Fluor 488 secondary antibody (1 µg/mL). IgG control: Unimmunized goat IgG (black line) fo



Immunohistochemistry

Image 2. ABIN185555 (3µg/ml) staining of paraffin embedded Human Kidney. Microwaved antigen retrieval with Tris/EDTA buffer pH9, HRP-staining.



Western Blotting

Image 3. ABIN185555 (0.5µg/ml) staining of HepG2 (A) and NIH3T3 (B) cell lysate (35µg protein in RIPA buffer). Detected by chemiluminescence.

Please check the [product details page](#) for more images. Overall 6 images are available for ABIN185555.