

Datasheet for ABIN185560 anti-COL11A2 antibody (Internal Region)

[Go to Product page](#)

1 Image

Overview

Quantity:	100 µg
Target:	COL11A2
Binding Specificity:	Internal Region
Reactivity:	Human
Host:	Goat
Clonality:	Polyclonal
Conjugate:	This COL11A2 antibody is un-conjugated
Application:	ELISA, Flow Cytometry (FACS)

Product Details

Purpose:	collagen type XI alpha 2
Immunogen:	Peptide with sequence QKELECEGGQRERPQ, from the internal region of the protein sequence according to NP_542411.2, NP_542412.2, NP_542410.2, NP_001157243.1.
Sequence:	QKELECEGGQ RERPQ
Isotype:	IgG
Specificity:	This antibody is expected to recognise all four reported isoforms (NP_542411.2, NP_542412.2, NP_542410.2, NP_001157243.1).
Predicted Reactivity:	Human, Dog, Pig, Cow
Purification:	Purified from goat serum by ammonium sulphate precipitation followed by antigen affinity chromatography using the immunizing peptide.

Product Details

Grade: Verified

Target Details

Target: COL11A2

Alternative Name: COL11A2 ([COL11A2 Products](#))

Background: COL11A2, collagen, type XI, alpha 2, DAQB-79P13.8, HGNC:2187, DFNA13, HKE5, PARP, STL3, Collagen alpha 2(XI)

Gene ID: 1302

NCBI Accession: [NP_542411](#), [NP_542412](#), [NP_542410](#), [NP_001157243](#)

Pathways: [RTK Signaling](#), [Sensory Perception of Sound](#), [Chromatin Binding](#)

Application Details

Application Notes: Peptide ELISA: antibody detection limit dilution 1:1000.

Comment: **Flow Cytometry:** Flow cytometric analysis of A431 cells. Recommended concentration: 10ug/ml.

Restrictions: For Research Use only

Handling

Format: Liquid

Concentration: 0.5 mg/mL

Buffer: Supplied at 0.5 mg/mL in Tris saline, 0.02 % sodium azide, pH 7.3 with 0.5 % bovine serum albumin.

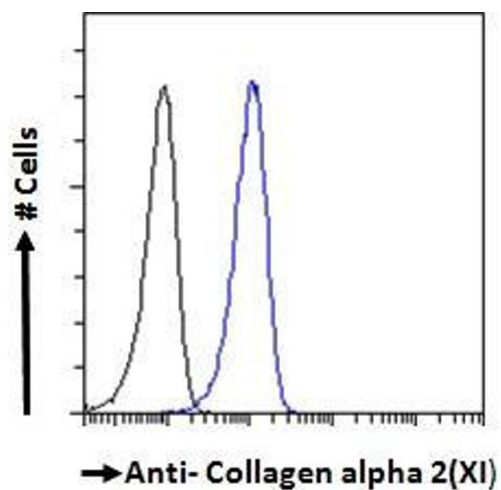
Preservative: Sodium azide

Precaution of Use: This product contains Sodium azide: a POISONOUS AND HAZARDOUS SUBSTANCE which should be handled by trained staff only.

Handling Advice: Minimize freezing and thawing.

Storage: -20 °C

Storage Comment: Aliquot and store at -20°C, with minimal freeze/thawing. A working aliquot may be refrigerated at 4°C for a few weeks and still remain viable.



Flow Cytometry

Image 1. ABIN185560 Flow cytometric analysis of paraformaldehyde fixed A431 cells (blue line), permeabilized with 0.5% Triton. Primary incubation 1hr (10ug/ml) followed by Alexa Fluor 488 secondary antibody (1ug/ml). IgG control: Unimmunized goat IgG (black line) followed by Alexa Fluor 488 secondary antibody.