



[Go to Product page](#)

Datasheet for ABIN185561

anti-PARP2 antibody (Internal Region)

3 Images

Overview

Quantity:	100 µg
Target:	PARP2
Binding Specificity:	Internal Region
Reactivity:	Human
Host:	Goat
Clonality:	Polyclonal
Conjugate:	This PARP2 antibody is un-conjugated
Application:	Western Blotting (WB), ELISA, Immunohistochemistry (IHC)

Product Details

Purpose:	PARP2
Immunogen:	Peptide with sequence C-LDLFEVEKDGEKE, from the internal region of the protein sequence according to NP_005475.1.
Sequence:	LDLFEVEKDG EKE
Isotype:	IgG
Cross-Reactivity:	Human
Purification:	Purified from goat serum by ammonium sulphate precipitation followed by antigen affinity chromatography using the immunizing peptide.
Grade:	Verified

Target Details

Target:	PARP2
Alternative Name:	PARP2 (PARP2 Products)
Background:	PARP2, poly (ADP-ribose) polymerase family, member 2, HGNC:272, ADPRT2, ADPRTL2, ADPRTL3, PARP-2, pADPRT-2 , ADP-ribosyltransferase (NAD poly ADP-ribose polymerase)-like 2, poly (ADP-ribosyl) transferase-like 2, poly(ADP-ribose) synthetase
Gene ID:	10038
NCBI Accession:	NP_005475
Pathways:	DNA Damage Repair

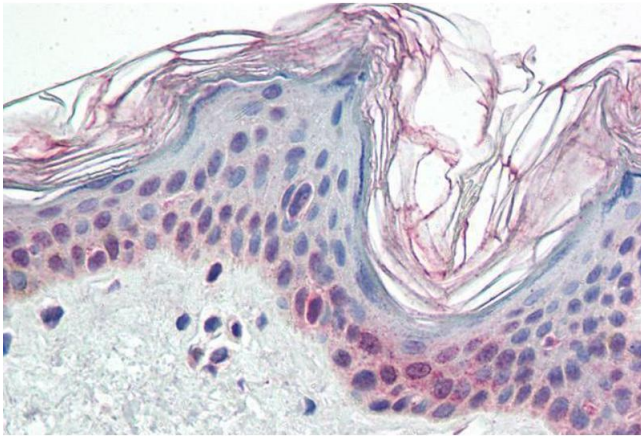
Application Details

Application Notes:	Immunohistochemistry: Paraffin embedded Human Skin and Adrenal Gland. Recommended concentration: 5 µg/mL. Western Blot: Approx 70 kDa band observed in Human Spleen lysates (calculated MW of 60.8 kDa according to NP_005475.1. Recommended concentration: 1-3 µg/mL. Peptide ELISA: antibody detection limit dilution 1:8000.
--------------------	---

Restrictions:	For Research Use only
---------------	-----------------------

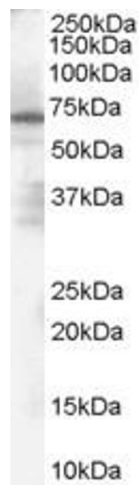
Handling

Format:	Liquid
Concentration:	0.5 mg/mL
Buffer:	Supplied at 0.5 mg/mL in Tris saline, 0.02 % sodium azide, pH 7.3 with 0.5 % bovine serum albumin.
Preservative:	Sodium azide
Precaution of Use:	This product contains Sodium azide: a POISONOUS AND HAZARDOUS SUBSTANCE which should be handled by trained staff only.
Handling Advice:	Minimize freezing and thawing.
Storage:	-20 °C
Storage Comment:	Aliquot and store at -20°C, with minimal freeze/thawing. A working aliquot may be refrigerated at 4°C for a few weeks and still remain viable.



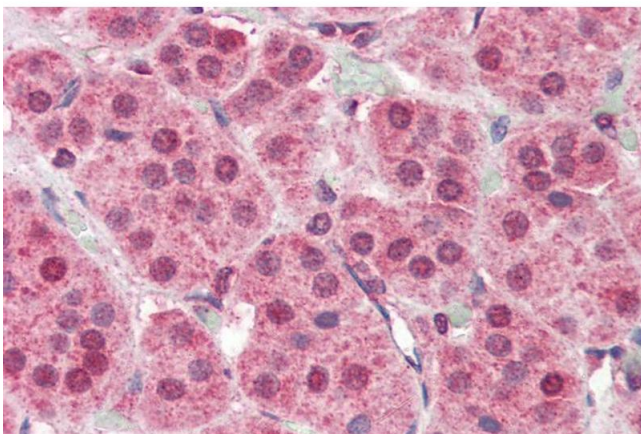
Immunohistochemistry

Image 1. ABIN185561 (5µg/ml) staining of paraffin embedded Human Skin. Steamed antigen retrieval with citrate buffer pH 6, AP-staining.



Western Blotting

Image 2. ABIN185561 (1µg/ml) staining of Human Spleen Lysate (35µg protein in RIPA buffer). Primary incubation was 1 hour. Detected by chemiluminescence.



Immunohistochemistry

Image 3. ABIN185561 (5µg/ml) staining of paraffin embedded Human Adrenal Gland. Steamed antigen retrieval with citrate buffer pH 6, AP-staining.