

Datasheet for ABIN185571
anti-TIM3 antibody (Internal Region)

8 Images

[Go to Product page](#)

Overview

Quantity:	100 µg
Target:	TIM3 (TIM 3)
Binding Specificity:	Internal Region
Reactivity:	Human
Host:	Goat
Clonality:	Polyclonal
Conjugate:	This TIM3 antibody is un-conjugated
Application:	Western Blotting (WB), Flow Cytometry (FACS), ELISA, Immunofluorescence (IF)

Product Details

Purpose:	TIM3 / HAVCR2
Immunogen:	Peptide with sequence C-KWYSHSKEKIQN, from the internal region of the protein sequence according to NP_116171.3.
Sequence:	KWYSHSKEKI QN
Isotype:	IgG
Cross-Reactivity:	Dog, Human
Purification:	Purified from goat serum by ammonium sulphate precipitation followed by antigen affinity chromatography using the immunizing peptide.
Grade:	Verified

Target Details

Target:	TIM3 (TIM 3)
Alternative Name:	HAVCR2 (TIM 3 Products)
Target Type:	Virus
Background:	HAVCR2, TIM3, hepatitis A virus cellular receptor 2, FLJ14428, KIM-3, TIMD3, Tim-3, T cell immunoglobulin mucin 3, T cell immunoglobulin mucin-3, kidney injury molecule-3
Gene ID:	84868
NCBI Accession:	NP_116171
Pathways:	Regulation of Lipid Metabolism by PPARalpha , Cancer Immune Checkpoints

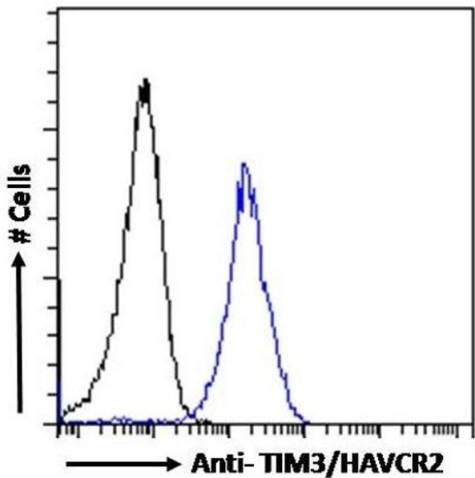
Application Details

Application Notes:	Western Blot: Approx 35 kDa band observed in lysates of cell lines A549 and HepG2 and in preliminary testing of Jurkat and U937 cell lysate (calculated MW of 33.4 kDa according to NP_116171.3). Recommended concentration:0.1-1 µg/mL. Primary incubation 1 hou Peptide ELISA: antibody detection limit dilution 1:64000.
Comment:	Immunofluorescence: Strong expression of the protein seen in the nucleus and plasma membrane of HepG2 cells. Recommended concentration: 10µg/ml. Flow Cytometry: Flow cytometric analysis of HepG2 cells. Recommended con
Restrictions:	For Research Use only

Handling

Format:	Liquid
Concentration:	0.5 mg/mL
Buffer:	Supplied at 0.5 mg/mL in Tris saline, 0.02 % sodium azide, pH 7.3 with 0.5 % bovine serum albumin.
Preservative:	Sodium azide
Precaution of Use:	This product contains Sodium azide: a POISONOUS AND HAZARDOUS SUBSTANCE which should be handled by trained staff only.
Handling Advice:	Minimize freezing and thawing.
Storage:	-20 °C
Storage Comment:	Aliquot and store at -20°C, with minimal freeze/thawing. A working aliquot may be refrigerated

at 4°C for a few weeks and still remain viable.



Flow Cytometry

Image 1. (ABIN185571) Flow cytometric analysis of paraformaldehyde fixed HepG2 cells (blue line), permeabilized with 0.5 % Triton. Primary incubation 1hr (10 µg/mL) followed by Alexa Fluor 488 secondary antibody (1 µg/mL). IgG control: Unimmunized goat IgG (black line) fo

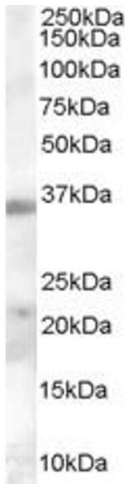
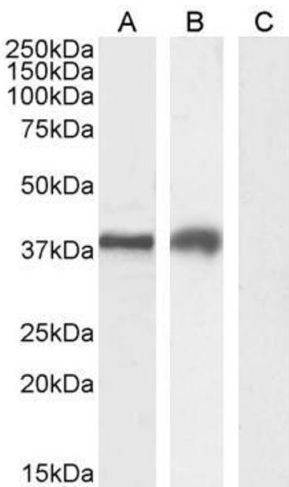


Image 2. ABIN185571 (0.3 ug/ml) staining of human tonsil lysate (35 ug protein in RIPA buffer). Primary incubation was 1 hour. Detected by chemiluminescence.



Western Blotting

Image 3. ABIN185571 (2µg/ml) staining of Jurkat (A), MOLT4 (B) and negative control A431 (C) cell lysate (35µg protein in RIPA buffer). Detected by chemiluminescence.

Please check the [product details page](#) for more images. Overall 8 images are available for ABIN185571.