

Datasheet for ABIN185572  
**anti-ARHGEF5 antibody (Internal Region)**[Go to Product page](#)

## 2 Images

## Overview

Quantity:	100 µg
Target:	ARHGEF5
Binding Specificity:	Internal Region
Reactivity:	Human
Host:	Goat
Clonality:	Polyclonal
Conjugate:	This ARHGEF5 antibody is un-conjugated
Application:	Western Blotting (WB), ELISA, Immunohistochemistry (IHC)

## Product Details

Purpose:	GEF5
Immunogen:	Peptide with sequence C-DKEIDQNSQQEE, from the internal region of the protein sequence according to NP_005426.2.
Sequence:	DKEIDQNSQQ EE
Isotype:	IgG
Cross-Reactivity:	Human
Purification:	Purified from goat serum by ammonium sulphate precipitation followed by antigen affinity chromatography using the immunizing peptide.
Grade:	Verified

## Target Details

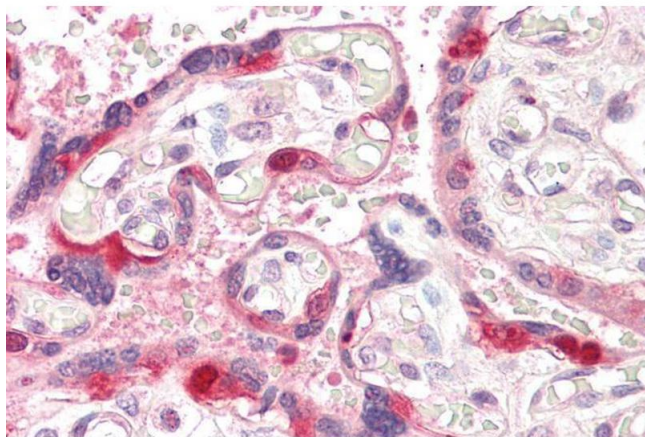
Target:	ARHGEF5
Alternative Name:	ARHGEF5 ( <a href="#">ARHGEF5 Products</a> )
Background:	GEF5, DKFZp686N1969, ARHGEF5, Rho guanine nucleotide exchange factor (GEF) 5, P60, TIM, TIM1, guanine nucleotide regulatory protein TIM, oncogene TIM rho guanine nucleotide exchange factor 5, transforming immortalized mammary oncogene
Gene ID:	7984
NCBI Accession:	<a href="#">NP_005426</a>

## Application Details

Application Notes:	Immunohistochemistry: Paraffin embedded Human Placenta. Recommended concentration: 3.75 µg/mL. Western Blot: Approx 170 kDa band observed in Human HeLa lysates (calculated MW of 177 kDa according to NP_005426.2). Recommended concentration: 0.1-0.3 µg/mL. Peptide ELISA: antibody detection limit dilution 1:16000.
Restrictions:	For Research Use only

## Handling

Format:	Liquid
Concentration:	0.5 mg/mL
Buffer:	Supplied at 0.5 mg/mL in Tris saline, 0.02 % sodium azide, pH 7.3 with 0.5 % bovine serum albumin.
Preservative:	Sodium azide
Precaution of Use:	This product contains Sodium azide: a POISONOUS AND HAZARDOUS SUBSTANCE which should be handled by trained staff only.
Handling Advice:	Minimize freezing and thawing.
Storage:	-20 °C
Storage Comment:	Aliquot and store at -20°C, with minimal freeze/thawing. A working aliquot may be refrigerated at 4°C for a few weeks and still remain viable.



#### Immunohistochemistry

**Image 1.** ABIN185572 (3.75µg/ml) staining of paraffin embedded Human Placenta. Steamed antigen retrieval with citrate buffer pH 6, AP-staining.



#### Western Blotting

**Image 2.** ABIN185572 (0.1µg/ml) staining of HeLa Lysate (35µg protein in RIPA buffer). Primary incubation was 1 hour. Detected by chemiluminescence.