

Datasheet for ABIN185574  
**anti-PDE4B antibody (C-Term)**

## 3 Images

[Go to Product page](#)

## Overview

|                      |  |
|----------------------|--|
| Quantity:            | 100 µg   |
| Target:              | PDE4B  |
| Binding Specificity: | C-Term   |
| Reactivity:          | Human, Mouse   |
| Host:                | Goat   |
| Clonality:           | Polyclonal   |
| Conjugate:           | This PDE4B antibody is un-conjugated                     |
| Application:         | Western Blotting (WB), ELISA, Immunohistochemistry (IHC) |

## Product Details

|                   |   |
|-------------------|---|
| Purpose:          | Phosphodiesterase 4B  |
| Immunogen:        | Peptide with sequence C-DIDIATEDKSPVDT, from the C Terminus of the protein sequence according to NP_002591.2, NP_001032418.1, NP_001032416.1, NP_001032417.1. |
| Sequence:         | DIDIATEDKS PVDT   |
| Isotype:          | IgG   |
| Specificity:      | This antibody is expected to recognise all reported isoforms (NP_002591.2, NP_001032418.1, NP_001032416.1 and NP_001032417.1).                                |
| Cross-Reactivity: | Human, Mouse, Rat   |
| Purification:     | Purified from goat serum by ammonium sulphate precipitation followed by antigen affinity chromatography using the immunizing peptide.                         |

## Product Details

Grade: Verified

## Target Details

Target: PDE4B

Alternative Name: PDE4B ([PDE4B Products](#))

Background: PDE4B, phosphodiesterase 4B, cAMP-specific (phosphodiesterase E4 dunce homolog, Drosophila), RP5-876C12.1, DKFZp686F2182, DPDE4, MGC126529, PDEIVB , OTTHUMP00000046896, cAMP-specific 3',5'-cyclic phosphodiesterase 4B, dunce-like phosphodiesterase E4, phos

Gene ID: 5142

NCBI Accession: [NP\\_002591](#), [NP\\_001032418](#), [NP\\_001032416](#), [NP\\_001032417](#)

Pathways: [Cellular Response to Molecule of Bacterial Origin](#), [cAMP Metabolic Process](#), [Myometrial Relaxation and Contraction](#)

## Application Details

Application Notes: Immunohistochemistry: Paraffin embedded Human Prostate. Recommended concentration: 5 µg/mL.  
Western Blot: Approx 85 kDa band observed in Mouse Brain lysates (calculated MW of 83.3 kDa according to Human NP\_002591.2 and 82.1 kDa according to Mouse NP\_062814.2). In transfected HEK293 transiently expressing Human PDE4B a band of approx. 85 kDa is observed.  
Peptide ELISA: antibody detection limit dilution 1:8000.

Restrictions: For Research Use only

## Handling

Format: Liquid

Concentration: 0.5 mg/mL

Buffer: Supplied at 0.5 mg/mL in Tris saline, 0.02 % sodium azide, pH 7.3 with 0.5 % bovine serum albumin.

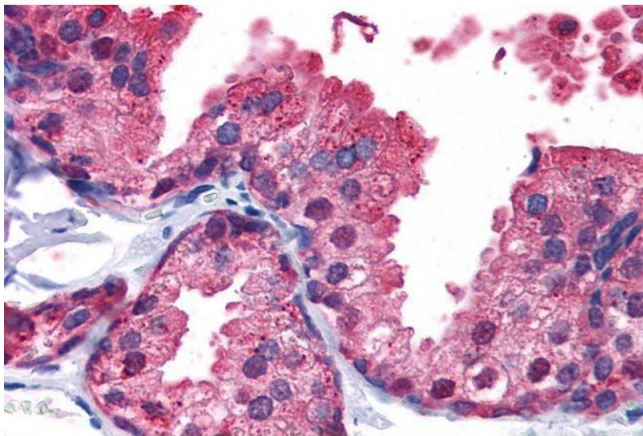
Preservative: Sodium azide

Precaution of Use: This product contains Sodium azide: a POISONOUS AND HAZARDOUS SUBSTANCE which should be handled by trained staff only.

## Handling

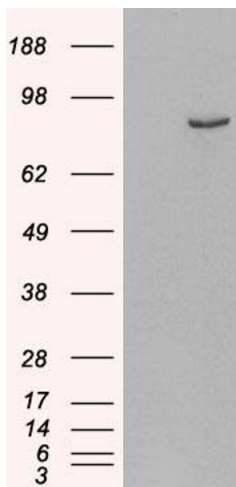
|                  |  |
|------------------|--|
| Handling Advice: | Minimize freezing and thawing.   |
| Storage:         | -20 °C   |
| Storage Comment: | Aliquot and store at -20°C, with minimal freeze/thawing. A working aliquot may be refrigerated at 4°C for a few weeks and still remain viable. |

## Images



### Immunohistochemistry

**Image 1.** ABIN185574 (5µg/ml) staining of paraffin embedded Human Prostate. Steamed antigen retrieval with citrate buffer pH 6, AP-staining.



### Western Blotting

**Image 2.** HEK293 overexpressing Human PDE4B (ABIN5454234) and probed with ABIN185574 (mock transfection in first lane).



**Image 3.** ABIN185574 (0.5µg/ml) staining of Mouse Brain Lysate (35µg protein in RIPA buffer). Primary incubation was 1 hour. Detected by chemiluminescence.