

Datasheet for ABIN185577

**anti-ADRA2A antibody (Internal Region)****2** Images[Go to Product page](#)

## Overview

Quantity:	100 µg
Target:	ADRA2A
Binding Specificity:	Internal Region
Reactivity:	Human
Host:	Goat
Clonality:	Polyclonal
Conjugate:	This ADRA2A antibody is un-conjugated
Application:	ELISA, Immunofluorescence (IF), Flow Cytometry (FACS)

## Product Details

Purpose:	ADRA2A
Immunogen:	Peptide with sequence C-TERRPNGLGPERS, from the internal region of the protein sequence according to NP_000672.2.
Sequence:	TERRPNGLGP ERS
Isotype:	IgG
Cross-Reactivity:	Dog, Human, Mouse, Rat
Purification:	Purified from goat serum by ammonium sulphate precipitation followed by antigen affinity chromatography using the immunizing peptide.
Grade:	Verified

## Target Details

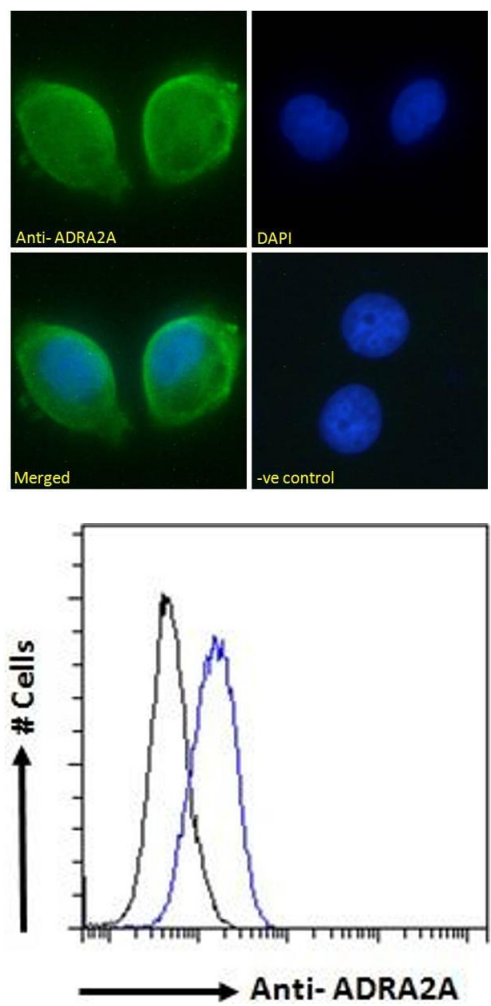
Target:	ADRA2A
Alternative Name:	ADRA2A ( <a href="#">ADRA2A Products</a> )
Background:	ADRA2A, adrenergic, alpha-2A-, receptor , ADRA2, ADRA2R, ADRAR, ALPHA2AAR, ZNF32 , OTTHUMP00000058849, alpha-2A-adrenergic receptor, alpha-2AAR subtype C10
Gene ID:	150
NCBI Accession:	<a href="#">NP_000672</a>
Pathways:	<a href="#">EGFR Signaling Pathway</a> , <a href="#">Negative Regulation of Hormone Secretion</a> , <a href="#">Carbohydrate Homeostasis</a> , <a href="#">cAMP Metabolic Process</a> , <a href="#">Regulation of G-Protein Coupled Receptor Protein Signaling</a> , <a href="#">Negative Regulation of Transporter Activity</a>

## Application Details

Application Notes:	Peptide ELISA: antibody detection limit dilution 1:32000.
Comment:	<b>Immunofluorescence:</b> Strong expression of the protein seen in the membranes of MCF7 cells. Recommended concentration: 10µg/ml. <b>Flow Cytometry:</b> Flow cytometric analysis of MCF7 cells. Recommended concentration: 10ug/ml.<
Restrictions:	For Research Use only

## Handling

Format:	Liquid
Concentration:	0.5 mg/mL
Buffer:	Supplied at 0.5 mg/mL in Tris saline, 0.02 % sodium azide, pH 7.3 with 0.5 % bovine serum albumin.
Preservative:	Sodium azide
Precaution of Use:	This product contains Sodium azide: a POISONOUS AND HAZARDOUS SUBSTANCE which should be handled by trained staff only.
Handling Advice:	Minimize freezing and thawing.
Storage:	-20 °C
Storage Comment:	Aliquot and store at -20°C, with minimal freeze/thawing. A working aliquot may be refrigerated at 4°C for a few weeks and still remain viable.



Immunofluorescence

**Image 1.** ABIN185577 Immunofluorescence analysis of paraformaldehyde fixed MCF7 cells, permeabilized with 0.15% Triton. Primary incubation 1hr (10ug/ml) followed by Alexa Fluor 488 secondary antibody (2ug/ml), showing membrane staining. The nuclear stain is DAPI (blue

Flow Cytometry

**Image 2.** ABIN185577 Flow cytometric analysis of paraformaldehyde fixed MCF7 cells (blue line), permeabilized with 0.5% Triton. Primary incubation overnight (10ug/ml) followed by Alexa Fluor 488 secondary antibody (1ug/ml). IgG control: Unimmunized goat IgG (black lin