

Datasheet for ABIN185580  
**anti-DDX6 antibody (C-Term)**[Go to Product page](#)

## 4 Images

## Overview

Quantity:	100 µg
Target:	DDX6
Binding Specificity:	C-Term
Reactivity:	Human
Host:	Goat
Clonality:	Polyclonal
Conjugate:	This DDX6 antibody is un-conjugated
Application:	Western Blotting (WB), ELISA, Immunohistochemistry (IHC)

## Product Details

Purpose:	DEAD-box protein 6
Immunogen:	Peptide with sequence C-AEYHSEPVEDEKP, from the C Terminus of the protein sequence according to NP_004388.1.
Sequence:	AEYHSEPVED EKP
Isotype:	IgG
Cross-Reactivity:	Dog, Human, Mouse, Rat
Purification:	Purified from goat serum by ammonium sulphate precipitation followed by antigen affinity chromatography using the immunizing peptide.
Grade:	Verified

## Target Details

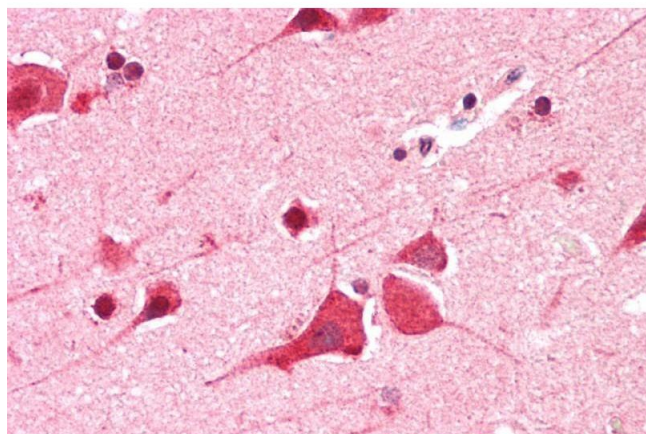
Target:	DDX6
Alternative Name:	DDX6 ( <a href="#">DDX6 Products</a> )
Background:	DEAD-box protien 6, DEAD (Asp-Glu-Ala-Asp) box polypeptide 6, DDX6, HLR2, P54, RCK, DEAD box-6, DEAD/H (Asp-Glu-Ala-Asp/His) box polypeptide 6 (RNA helicase, 54kD),
Gene ID:	1656
NCBI Accession:	<a href="#">NP_004388</a>
Pathways:	<a href="#">Ribonucleoprotein Complex Subunit Organization</a>

## Application Details

Application Notes:	Immunohistochemistry: Paraffin embedded Human Brain (Cortex) and Thymus. Recommended concentration: 5 µg/mL.  Western Blot: Approx 50 kDa band observed in lysates of cell lines Daudi, Jurkat and HepG2 (calculated MW of 53.2 kDa according to NP_004388.1). Recommended concentration: 0.3-1 µg/mL. Primary incubation was 1 hour.  Peptide ELISA: antibody detection limit dilution 1:128000.
Restrictions:	For Research Use only

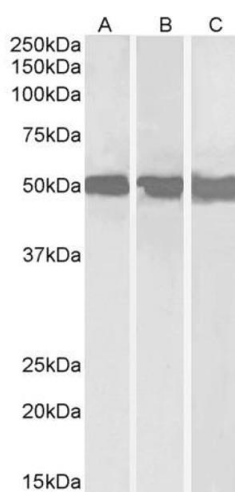
## Handling

Format:	Liquid
Concentration:	0.5 mg/mL
Buffer:	Supplied at 0.5 mg/mL in Tris saline, 0.02 % sodium azide, pH 7.3 with 0.5 % bovine serum albumin.
Preservative:	Sodium azide
Precaution of Use:	This product contains Sodium azide: a POISONOUS AND HAZARDOUS SUBSTANCE which should be handled by trained staff only.
Handling Advice:	Minimize freezing and thawing.
Storage:	-20 °C
Storage Comment:	Aliquot and store at -20°C, with minimal freeze/thawing. A working aliquot may be refrigerated at 4°C for a few weeks and still remain viable.



### Immunohistochemistry

**Image 1.** ABIN185580 (5µg/ml) staining of paraffin embedded Human Cortex. Steamed antigen retrieval with citrate buffer pH 6, AP-staining.



### Western Blotting

**Image 2.** ABIN185580 (0.3µg/ml) staining of Daudi (A), Jurkat (B) and HepG2 (C) lysates (35µg protein in RIPA buffer). Detected by chemiluminescence.



**Image 3.** ABIN185580 (0.3µg/ml) staining of Jurkat cell lysate (35µg protein in RIPA buffer). Primary incubation was 1 hour. Detected by chemiluminescence.

Please check the [product details page](#) for more images. Overall 4 images are available for ABIN185580.