

Datasheet for ABIN185585
anti-GLI2 antibody (Internal Region)[Go to Product page](#)

1 Image

Overview

Quantity:	100 µg
Target:	GLI2
Binding Specificity:	Internal Region
Reactivity:	Human
Host:	Goat
Clonality:	Polyclonal
Conjugate:	This GLI2 antibody is un-conjugated
Application:	ELISA, Immunohistochemistry (IHC)

Product Details

Purpose:	GLI2
Immunogen:	Peptide with sequence DLKEDLDRDDCKQE, from the internal region of the protein sequence according to NP_005261.2.
Sequence:	DLKEDLDRDD CKQE
Isotype:	IgG
Specificity:	This antibody is expected to recognise all four reported isoforms (NP_084655.1, NP_084656.1, NP_084657.1 and NP_005261.1)
Predicted Reactivity:	Human, Mouse
Purification:	Purified from goat serum by ammonium sulphate precipitation followed by antigen affinity chromatography using the immunizing peptide.

Product Details

Grade: Verified

Target Details

Target: GLI2

Alternative Name: GLI2 ([GLI2 Products](#))

Background: GLI2, GLI-Kruppel family member GLI2 , THP2, oncogene GLI2, tax helper protein 2, tax-responsive element-2 holding protein, tax-responsive element-25-bp sequence binding protein, zinc finger protein GLI2

Gene ID: 2736

NCBI Accession: [NP_005261](#)

Pathways: [Hedgehog Signaling](#), [Dopaminergic Neurogenesis](#)

Application Details

Application Notes: DS WB Results: Preliminary experiments gave an approx 55 kDa band in Human Bone Marrow and Ovary lysates after 1 µg/mL antibody staining. Please note that currently we cannot find an explanation in the literature for the band we observe given the calculated size of 168 kDa according to NP_005261.2. The 55 kDa band was successfully blocked by incubation with the immunizing peptide.

DS IHC Results: In paraffin embedded Human Lymph Node shows nuclear staining in macrophages. Recommended concentration: 4-6 µg/mL.

Peptide ELISA: antibody detection limit dilution 1:2000.

Restrictions: For Research Use only

Handling

Format: Liquid

Concentration: 0.5 mg/mL

Buffer: Supplied at 0.5 mg/mL in Tris saline, 0.02 % sodium azide, pH 7.3 with 0.5 % bovine serum albumin.

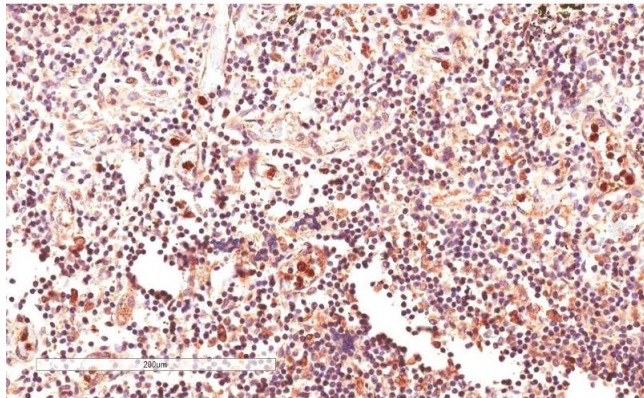
Preservative: Sodium azide

Precaution of Use: This product contains Sodium azide: a POISONOUS AND HAZARDOUS SUBSTANCE which should be handled by trained staff only.

Handling

Handling Advice:	Minimize freezing and thawing.
Storage:	-20 °C
Storage Comment:	Aliquot and store at -20°C, with minimal freeze/thawing. A working aliquot may be refrigerated at 4°C for a few weeks and still remain viable.

Images



Immunohistochemistry

Image 1. ABIN185585 (4µg/ml) staining of paraffin embedded Human Lymph Node. Microwaved antigen retrieval with citrate buffer pH 6, HRP-staining.