

Datasheet for ABIN185594

anti-PRODH antibody (Internal Region)[Go to Product page](#)**2** Images

Overview

Quantity:	100 µg
Target:	PRODH
Binding Specificity:	Internal Region
Reactivity:	Human
Host:	Goat
Clonality:	Polyclonal
Conjugate:	This PRODH antibody is un-conjugated
Application:	ELISA, Immunohistochemistry (IHC)

Product Details

Purpose:	PRODH
Immunogen:	Peptide with sequence C-ERDGS GTNKRDKQYQ, from the internal region of the protein sequence according to NP_057419.2.
Sequence:	ERDGS GTNKR DKQYQ
Isotype:	IgG
Cross-Reactivity:	Human, Mouse
Purification:	Purified from goat serum by ammonium sulphate precipitation followed by antigen affinity chromatography using the immunizing peptide.
Grade:	Verified

Target Details

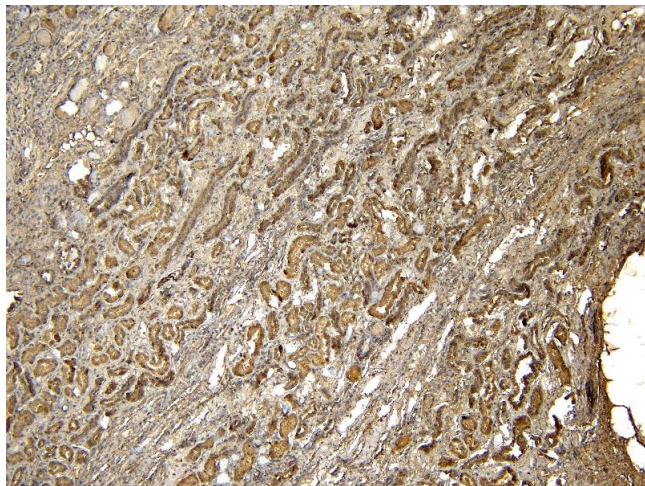
Target:	PRODH
Alternative Name:	PRODH (PRODH Products)
Background:	PRODH, proline dehydrogenase (oxidase) 1 , HSPOX2, PIG6, PRODH1, PRODH2, SCZD4, TP53I6, FLJ33744, MGC148078, MGC148079, Proline oxidase, mitochondrial, p53 induced protein, proline dehydrogenase (proline oxidase), proline oxidase 2, tumor protein p53 ind
Gene ID:	5625, 19125
NCBI Accession:	NP_057419
Pathways:	Response to Water Deprivation , Monocarboxylic Acid Catabolic Process

Application Details

Application Notes:	Immunohistochemistry: Paraffin embedded Human Kidney. Recommended concentration: 6-7 µg/mL. Peptide ELISA: antibody detection limit dilution 1:4000.
Restrictions:	For Research Use only

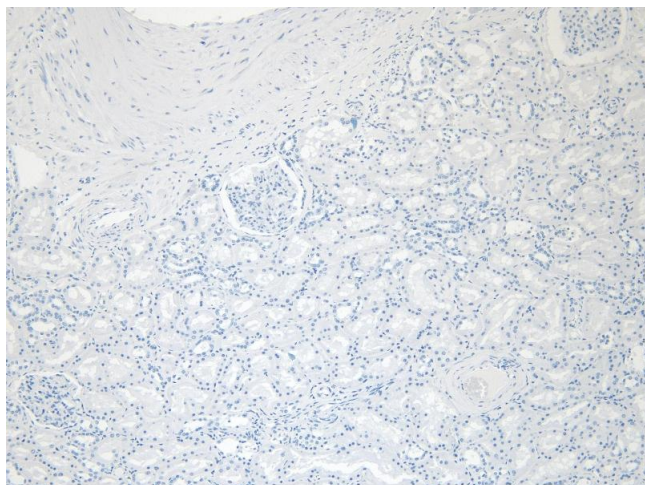
Handling

Format:	Liquid
Concentration:	0.5 mg/mL
Buffer:	Supplied at 0.5 mg/mL in Tris saline, 0.02 % sodium azide, pH 7.3 with 0.5 % bovine serum albumin.
Preservative:	Sodium azide
Precaution of Use:	This product contains Sodium azide: a POISONOUS AND HAZARDOUS SUBSTANCE which should be handled by trained staff only.
Handling Advice:	Minimize freezing and thawing.
Storage:	-20 °C
Storage Comment:	Aliquot and store at -20°C, with minimal freeze/thawing. A working aliquot may be refrigerated at 4°C for a few weeks and still remain viable.



Immunohistochemistry

Image 1. (ABIN185594) (6 µg/mL) staining of paraffin embedded Human Kidney. Heat induced antigen retrieval with citrate buffer pH 6, HRP-staining.



Immunohistochemistry

Image 2. (ABIN185594) Negative Control showing staining of paraffin embedded Human Kidney, with no primary antibody