

Datasheet for ABIN185604

anti-CDX2 antibody (Internal Region)[Go to Product page](#)**2** Images

Overview

Quantity:	100 µg
Target:	CDX2
Binding Specificity:	Internal Region
Reactivity:	Human
Host:	Goat
Clonality:	Polyclonal
Conjugate:	This CDX2 antibody is un-conjugated
Application:	Western Blotting (WB), ELISA, Immunohistochemistry (IHC)

Product Details

Purpose:	CDX2
Immunogen:	Peptide with sequence EQLSPGGQRRNLCE, from the internal region of the protein sequence according to NP_001256.1.
Sequence:	EQLSPGGQRR NLCE
Isotype:	IgG
Specificity:	No cross-reactivity expected with CDX1 and 4
Cross-Reactivity:	Dog, Human, Mouse, Rat
Purification:	Purified from goat serum by ammonium sulphate precipitation followed by antigen affinity chromatography using the immunizing peptide.
Grade:	Verified

Target Details

Target:	CDX2
Alternative Name:	CDX2 (CDX2 Products)
Background:	CDX2, caudal type homeo box transcription factor 2 , HGNC:1806, CDX-3, CDX3
Gene ID:	1045, 12591, 66019
NCBI Accession:	NP_001256
Pathways:	Peptide Hormone Metabolism , Stem Cell Maintenance

Application Details

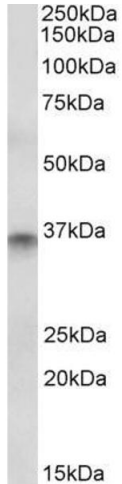
Application Notes:	Immunohistochemistry: Paraffin embedded Human Colon. Recommended concentration: 5 µg/mL. Western Blot: Approx 35 kDa band observed in Human Colon lysates (calculated MW of 33.5 kDa according to NP_001256.1). Recommended concentration: 1-3 µg/mL. Primary incubation was 1 hour. Peptide ELISA: antibody detection limit dilution 1:4000.
Restrictions:	For Research Use only

Handling

Format:	Liquid
Concentration:	0.5 mg/mL
Buffer:	Supplied at 0.5 mg/mL in Tris saline, 0.02 % sodium azide, pH 7.3 with 0.5 % bovine serum albumin.
Preservative:	Sodium azide
Precaution of Use:	This product contains Sodium azide: a POISONOUS AND HAZARDOUS SUBSTANCE which should be handled by trained staff only.
Handling Advice:	Minimize freezing and thawing.
Storage:	-20 °C
Storage Comment:	Aliquot and store at -20°C, with minimal freeze/thawing. A working aliquot may be refrigerated at 4°C for a few weeks and still remain viable.



Image 1. ABIN185604 (1µg/ml) staining of Human Kidney lysate (35µg protein in RIPA buffer). Primary incubation was 1 hour. Detected by chemiluminescence.



Western Blotting

Image 2. ABIN185604 (1µg/ml) staining of Human Colon lysate (35µg protein in RIPA buffer). Detected by chemiluminescence.