

Datasheet for ABIN185606

**anti-CYP3A4 antibody (Internal Region)****3** Images[Go to Product page](#)

## Overview

Quantity:	100 µg
Target:	CYP3A4
Binding Specificity:	Internal Region
Reactivity:	Human
Host:	Goat
Clonality:	Polyclonal
Conjugate:	This CYP3A4 antibody is un-conjugated
Application:	ELISA, Immunohistochemistry (IHC), Flow Cytometry (FACS)

## Product Details

Purpose:	CYP3A4
Immunogen:	C-KESRLEDTQKHR
Sequence:	KESRLEDTQK HR
Isotype:	IgG
Specificity:	This antibody is expected to recognise both reported isoforms (NP_059488.2, NP_001189784.1) and it is not expected to cross-react with 3A5, 3A7 or 3A43.
Cross-Reactivity:	Human
Purification:	Purified from goat serum by ammonium sulphate precipitation followed by antigen affinity chromatography using the immunizing peptide.
Grade:	Verified

## Target Details

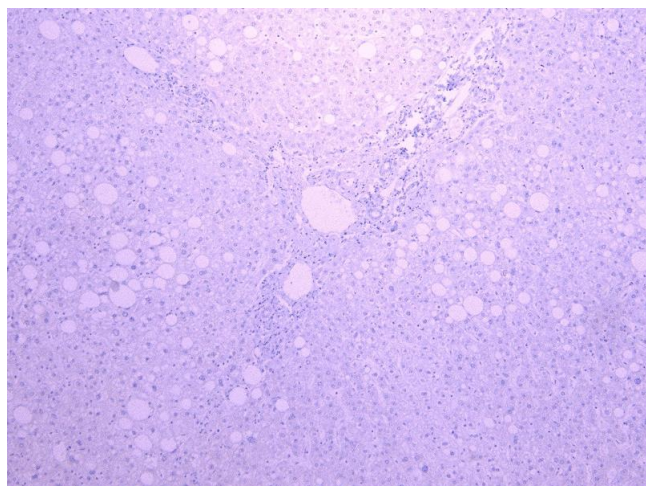
Target:	CYP3A4
Alternative Name:	CYP3A4 ( <a href="#">CYP3A4 Products</a> )
Background:	CYP3A4, cytochrome P450, family 3, subfamily A, polypeptide 4 , HGNC:2637, CP33, CP34, CYP3A, CYP3A3, HLP, NF-25, P450C3, P450PCN1, P450-III, steroid inducible, cytochrome P450, subfamily IIIA (naphedipine oxidase), polypeptide 3, cytochrome P450, subfam
Gene ID:	1576
NCBI Accession:	<a href="#">NP_059488</a> , <a href="#">NP_001189784</a>
Pathways:	<a href="#">Steroid Hormone Biosynthesis</a>

## Application Details

Application Notes:	Immunohistochemistry: Paraffin embedded Human Liver. Recommended concentration: 5-7 µg/mL. Peptide ELISA: antibody detection limit dilution 1:8000.
Comment:	<b>Flow Cytometry:</b> Flow cytometric analysis of HepG2 cells. Recommended concentration: 10ug/ml.
Restrictions:	For Research Use only

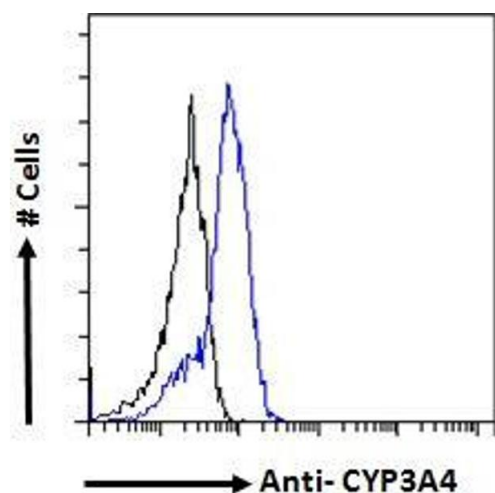
## Handling

Format:	Liquid
Concentration:	0.5 mg/mL
Buffer:	Supplied at 0.5 mg/mL in Tris saline, 0.02 % sodium azide, pH 7.3 with 0.5 % bovine serum albumin.
Preservative:	Sodium azide
Precaution of Use:	This product contains Sodium azide: a POISONOUS AND HAZARDOUS SUBSTANCE which should be handled by trained staff only.
Handling Advice:	Minimize freezing and thawing.
Storage:	-20 °C
Storage Comment:	Aliquot and store at -20°C, with minimal freeze/thawing. A working aliquot may be refrigerated at 4°C for a few weeks and still remain viable.



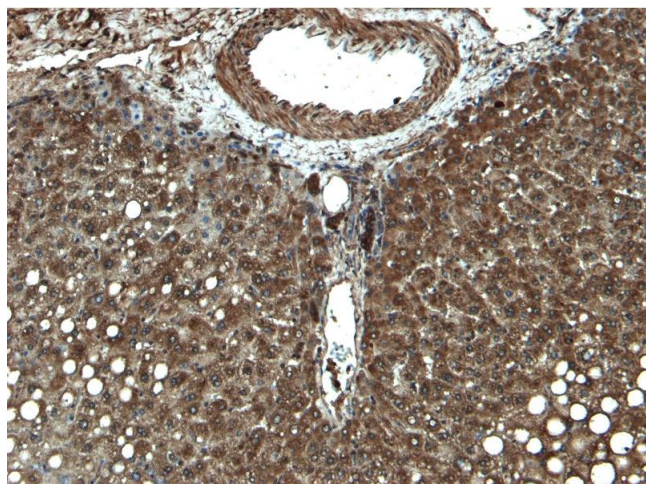
#### Immunohistochemistry

**Image 1.** ABIN185606 Negative Control showing staining of paraffin embedded Human Liver, with no primary antibody.



#### Flow Cytometry

**Image 2.** ABIN185606 Flow cytometric analysis of paraformaldehyde fixed HepG2 cells (blue line), permeabilized with 0.5% Triton. Primary incubation 1hr (10ug/ml) followed by Alexa Fluor 488 secondary antibody (1ug/ml). IgG control: Unimmunized goat IgG (black line) followed by Alexa Fluor 488 secondary antibody.



#### Immunohistochemistry

**Image 3.** ABIN185606 (5 µg/mL) staining of paraffin embedded Human Liver. Heat induced antigen retrieval with citrate buffer pH 6, HRP-staining.