



Datasheet for ABIN185607
anti-LEF1 antibody (Internal Region)



[Go to Product page](#)

6 Images

Overview

Quantity:	100 µg
Target:	LEF1
Binding Specificity:	Internal Region
Reactivity:	Human
Host:	Goat
Clonality:	Polyclonal
Conjugate:	This LEF1 antibody is un-conjugated
Application:	Western Blotting (WB), ELISA, Immunofluorescence (IF), Flow Cytometry (FACS)

Product Details

Purpose:	LEF1
Immunogen:	Peptide with sequence C-QHEQRKEQEPKRP, from the internal region of the protein sequence according to NP_057353.1.
Sequence:	QHEQRKEQEP KRP
Isotype:	IgG
Cross-Reactivity:	Cow, Dog, Human, Mouse, Rat
Purification:	Purified from goat serum by ammonium sulphate precipitation followed by antigen affinity chromatography using the immunizing peptide.
Grade:	Verified

Target Details

Target:	LEF1
Alternative Name:	LEF1 (LEF1 Products)
Background:	LEF1, lymphoid enhancer-binding factor 1 , HGNC:6551, DKFZp586H0919, TCF1ALPHA , lymphoid enhancer binding factor-1
Gene ID:	51176, 16842, 161452
NCBI Accession:	NP_057353
Pathways:	WNT Signaling , Intracellular Steroid Hormone Receptor Signaling Pathway , Regulation of Hormone Metabolic Process , Nuclear Hormone Receptor Binding , Chromatin Binding

Application Details

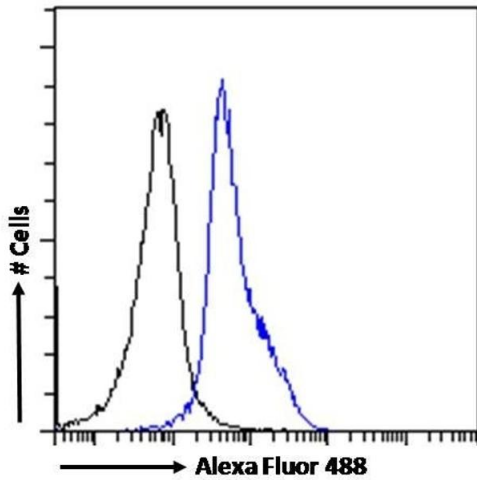
Application Notes:	Western Blot: Approx 50--55 kDa band observed in nuclear lysates of cell line K562 (calculated MW of 44.2 kDa according to NP_057353.1)/ This molecular weight is routinely observed by other sources and was successfully blocked by incubation with the imm Peptide ELISA: antibody detection limit dilution 1:32000.
Comment:	Immunofluorescence: Strong expression of the protein seen in the nuclei of Jurkat and U2OS cells. Recommended concentration: 10µg/ml. Flow Cytometry: Flow cytometric analysis of Jurkat cells. Recommended concentration:
Restrictions:	For Research Use only

Handling

Format:	Liquid
Concentration:	0.5 mg/mL
Buffer:	Supplied at 0.5 mg/mL in Tris saline, 0.02 % sodium azide, pH 7.3 with 0.5 % bovine serum albumin.
Preservative:	Sodium azide
Precaution of Use:	This product contains Sodium azide: a POISONOUS AND HAZARDOUS SUBSTANCE which should be handled by trained staff only.
Handling Advice:	Minimize freezing and thawing.
Storage:	-20 °C
Storage Comment:	Aliquot and store at -20°C, with minimal freeze/thawing. A working aliquot may be refrigerated

at 4°C for a few weeks and still remain viable.

Images



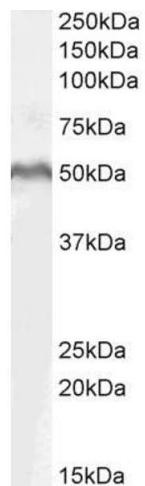
Flow Cytometry

Image 1. (ABIN185607) Flow cytometric analysis of paraformaldehyde fixed Jurkat cells (blue line), permeabilized with 0.5 % Triton. Primary incubation 1hr (10 µg/mL) followed by Alexa Fluor 488 secondary antibody (1 µg/mL). IgG control: Unimmunized goat IgG (black line) f



Image 2. ABIN185607 (1µg/ml) staining of Daudi cell lysate

(35µg protein in RIPA buffer). Primary incubation was 1 hour. Detected by chemiluminescence.



Western Blotting

Image 3. ABIN185607 (1µg/ml) staining of MOLT4 lysate (35µg protein in RIPA buffer). Detected by chemiluminescence.

Please check the [product details page](#) for more images. Overall 6 images are available for ABIN185607.