

Datasheet for ABIN185609  
**anti-SMAD9 antibody (Internal Region)**[Go to Product page](#)

## 2 Images

## Overview

Quantity:	100 µg
Target:	SMAD9
Binding Specificity:	Internal Region
Reactivity:	Human
Host:	Goat
Clonality:	Polyclonal
Conjugate:	This SMAD9 antibody is un-conjugated
Application:	Western Blotting (WB), ELISA, Immunohistochemistry (IHC)

## Product Details

Purpose:	SMAD9
Immunogen:	Peptide with sequence C-HSEPLMPHNATYPD, from the internal region of the protein sequence according to NP_005896.1.
Sequence:	HSEPLMPHNA TYPD
Isotype:	IgG
Specificity:	This antibody is not expected to cross-react with SMAD1 and SMAD5.
Cross-Reactivity:	Dog, Human, Mouse, Rat
Purification:	Purified from goat serum by ammonium sulphate precipitation followed by antigen affinity chromatography using the immunizing peptide.
Grade:	Verified

### Target Details

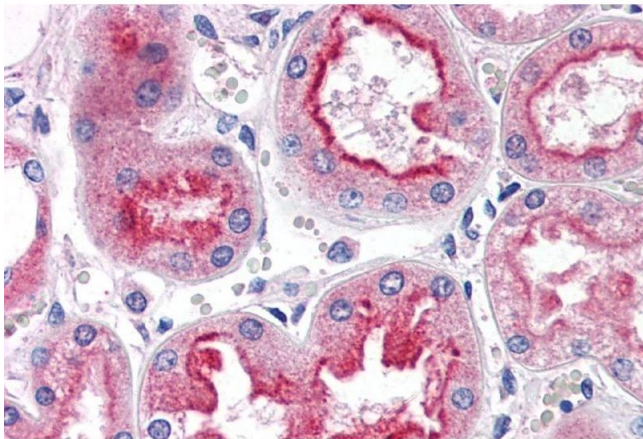
Target:	SMAD9
Alternative Name:	SMAD9 ( <a href="#">SMAD9 Products</a> )
Background:	SMAD9, SMAD, mothers against DPP homolog 9 (Drosophila)] , HGNC:6774, MADH6, MADH9, SMAD8A, SMAD8B , MAD (mothers against decapentaplegic, Drosophila) homolog 9, MAD, mothers against decapentaplegic homolog 9, MAD, mothers against decapentaplegic homolog
Gene ID:	4093
NCBI Accession:	<a href="#">NP_005896</a>

### Application Details

Application Notes:	Immunohistochemistry: Paraffin embedded Human Kidney. Recommended concentration: 5 µg/mL.  Western Blot: Approx 50 kDa band observed in Human Skin lysates (calculated MW of 48.6 kDa according to NP_005896.1). Recommended concentration: 0.3-1.0 µg/mL. Primary incubation was 1 hour.  Peptide ELISA: antibody detection limit dilution 1:64000.
Restrictions:	For Research Use only

### Handling

Format:	Liquid
Concentration:	0.5 mg/mL
Buffer:	Supplied at 0.5 mg/mL in Tris saline, 0.02 % sodium azide, pH 7.3 with 0.5 % bovine serum albumin.
Preservative:	Sodium azide
Precaution of Use:	This product contains Sodium azide: a POISONOUS AND HAZARDOUS SUBSTANCE which should be handled by trained staff only.
Handling Advice:	Minimize freezing and thawing.
Storage:	-20 °C
Storage Comment:	Aliquot and store at -20°C, with minimal freeze/thawing. A working aliquot may be refrigerated at 4°C for a few weeks and still remain viable.



Immunohistochemistry

**Image 1.** (ABIN185609) (5 µg/mL) staining of paraffin embedded Human Kidney. Steamed antigen retrieval with citrate buffer pH 6, AP-staining.



Western Blotting

**Image 2.** ABIN185609 (0.3µg/ml) staining of Human Skin lysate (35µg protein in RIPA buffer). Detected by chemiluminescence.