



[Go to Product page](#)

Datasheet for ABIN185613

## anti-STAM2 antibody (Internal Region)

### 2 Images

#### Overview

|                      |                                                     |
|----------------------|-----------------------------------------------------|
| Quantity:            | 100 µg                                              |
| Target:              | STAM2                                               |
| Binding Specificity: | Internal Region                                     |
| Reactivity:          | Human                                               |
| Host:                | Goat                                                |
| Clonality:           | Polyclonal                                          |
| Conjugate:           | This STAM2 antibody is un-conjugated                |
| Application:         | Western Blotting (WB), ELISA, Flow Cytometry (FACS) |

#### Product Details

|                   |                                                                                                                                       |
|-------------------|---------------------------------------------------------------------------------------------------------------------------------------|
| Purpose:          | STAM2                                                                                                                                 |
| Immunogen:        | Peptide with sequence C-QSIDPTDSKPDSQD, from the internal region of the protein sequence according to NP_005834.3.                    |
| Sequence:         | QSIDPTDSKP DSQD                                                                                                                       |
| Isotype:          | IgG                                                                                                                                   |
| Specificity:      | No cross-reaction expected with STAM1.                                                                                                |
| Cross-Reactivity: | Dog, Human, Mouse                                                                                                                     |
| Purification:     | Purified from goat serum by ammonium sulphate precipitation followed by antigen affinity chromatography using the immunizing peptide. |
| Grade:            | Verified                                                                                                                              |

## Target Details

---

|                   |                                                                                                                                                                                                                       |
|-------------------|-----------------------------------------------------------------------------------------------------------------------------------------------------------------------------------------------------------------------|
| Target:           | STAM2                                                                                                                                                                                                                 |
| Alternative Name: | STAM2 ( <a href="#">STAM2 Products</a> )                                                                                                                                                                              |
| Background:       | STAM2, signal transducing adaptor molecule (SH3 domain and ITAM motif) 2 , HGNC:11358, DKFZp564C047, Hbp, STAM2A, STAM2B , STAM-like protein containing SH3 and ITAM domains 2, signal transducing adaptor molecule 2 |
| Gene ID:          | 10254, 56324                                                                                                                                                                                                          |
| NCBI Accession:   | <a href="#">NP_005834</a>                                                                                                                                                                                             |
| Pathways:         | <a href="#">EGFR Signaling Pathway</a> , <a href="#">EGFR Downregulation</a>                                                                                                                                          |

## Application Details

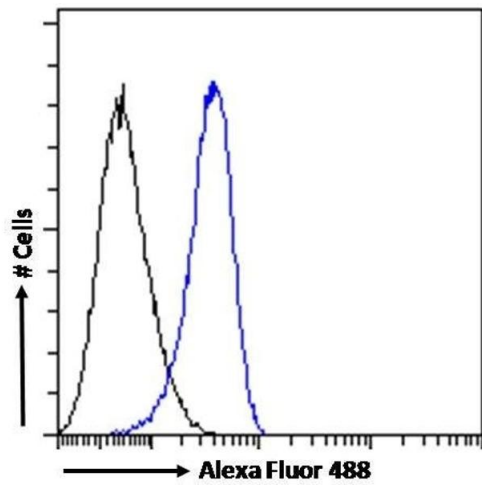
---

|                    |                                                                                                                                                                                                                                                                                                                             |
|--------------------|-----------------------------------------------------------------------------------------------------------------------------------------------------------------------------------------------------------------------------------------------------------------------------------------------------------------------------|
| Application Notes: | Western Blot: Approx 70 kDa band observed in Human Spleen lysates and in preliminary testing of HeLa cell lysate (calculated MW of 58.2 kDa according to NP_005834.3). This molecular weight is routinely observed by other sources. Recommended concentration:<br>Peptide ELISA: antibody detection limit dilution 1:8000. |
| Comment:           | <b>Flow Cytometry:</b> Flow cytometric analysis of K562 cells. Recommended concentration: 10ug/ml.                                                                                                                                                                                                                          |
| Restrictions:      | For Research Use only                                                                                                                                                                                                                                                                                                       |

## Handling

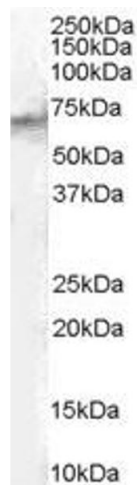
---

|                    |                                                                                                                                                |
|--------------------|------------------------------------------------------------------------------------------------------------------------------------------------|
| Format:            | Liquid                                                                                                                                         |
| Concentration:     | 0.5 mg/mL                                                                                                                                      |
| Buffer:            | Supplied at 0.5 mg/mL in Tris saline, 0.02 % sodium azide, pH 7.3 with 0.5 % bovine serum albumin.                                             |
| Preservative:      | Sodium azide                                                                                                                                   |
| Precaution of Use: | This product contains Sodium azide: a POISONOUS AND HAZARDOUS SUBSTANCE which should be handled by trained staff only.                         |
| Handling Advice:   | Minimize freezing and thawing.                                                                                                                 |
| Storage:           | -20 °C                                                                                                                                         |
| Storage Comment:   | Aliquot and store at -20°C, with minimal freeze/thawing. A working aliquot may be refrigerated at 4°C for a few weeks and still remain viable. |



### Flow Cytometry

**Image 1.** (ABIN185613) Flow cytometric analysis of paraformaldehyde fixed K562 cells (blue line), permeabilized with 0.5 % Triton. Primary incubation 1hr (10 µg/mL) followed by Alexa Fluor 488 secondary antibody (1 µg/mL). IgG control: Unimmunized goat IgG (black line) fo



**Image 2.** ABIN185613 (1µg/ml) staining of Human Spleen lysate (35µg protein in RIPA buffer). Primary incubation was 1 hour. Detected by chemiluminescence.